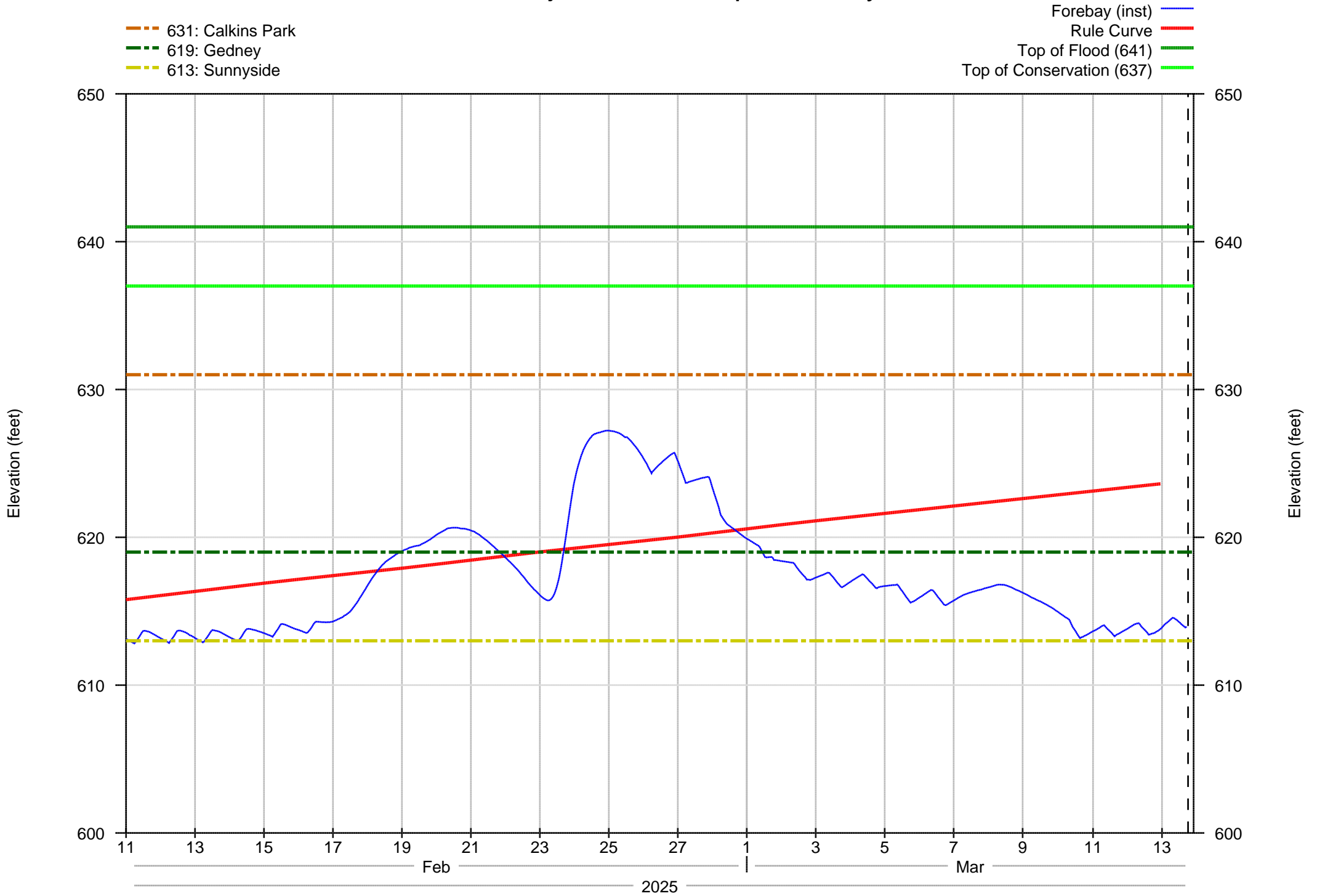
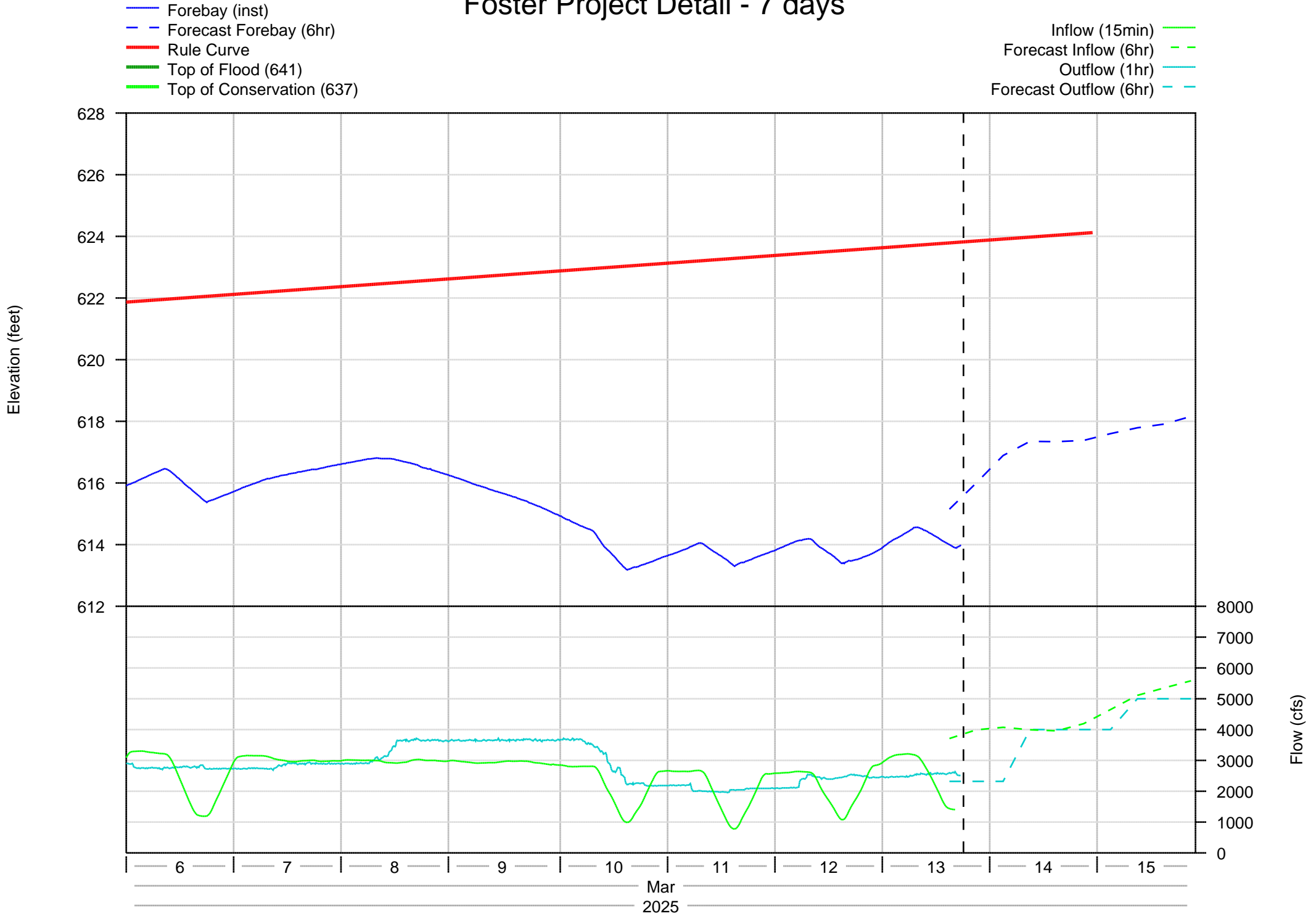


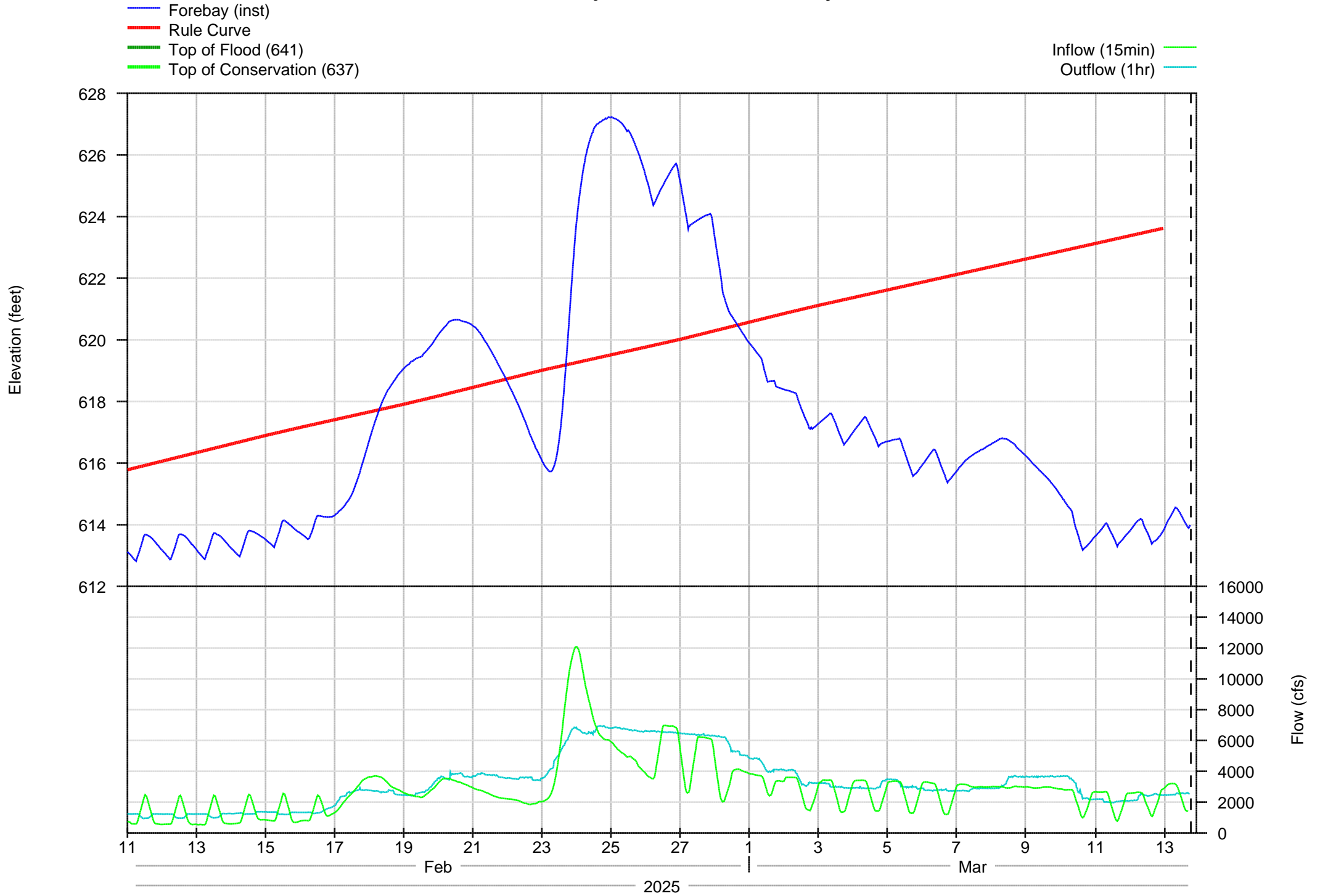
Foster Project Boat Ramps - 30 days



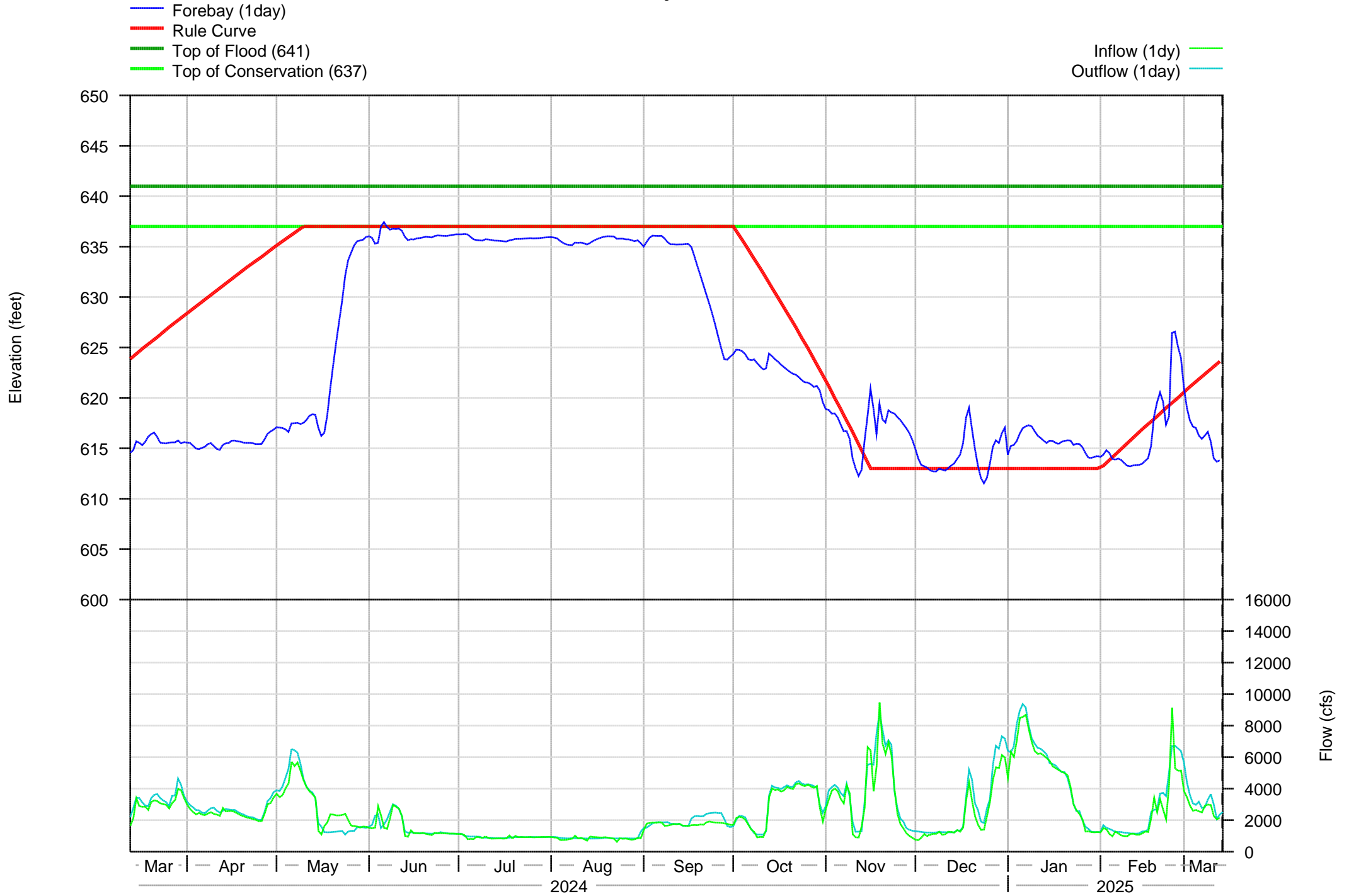
Foster Project Detail - 7 days



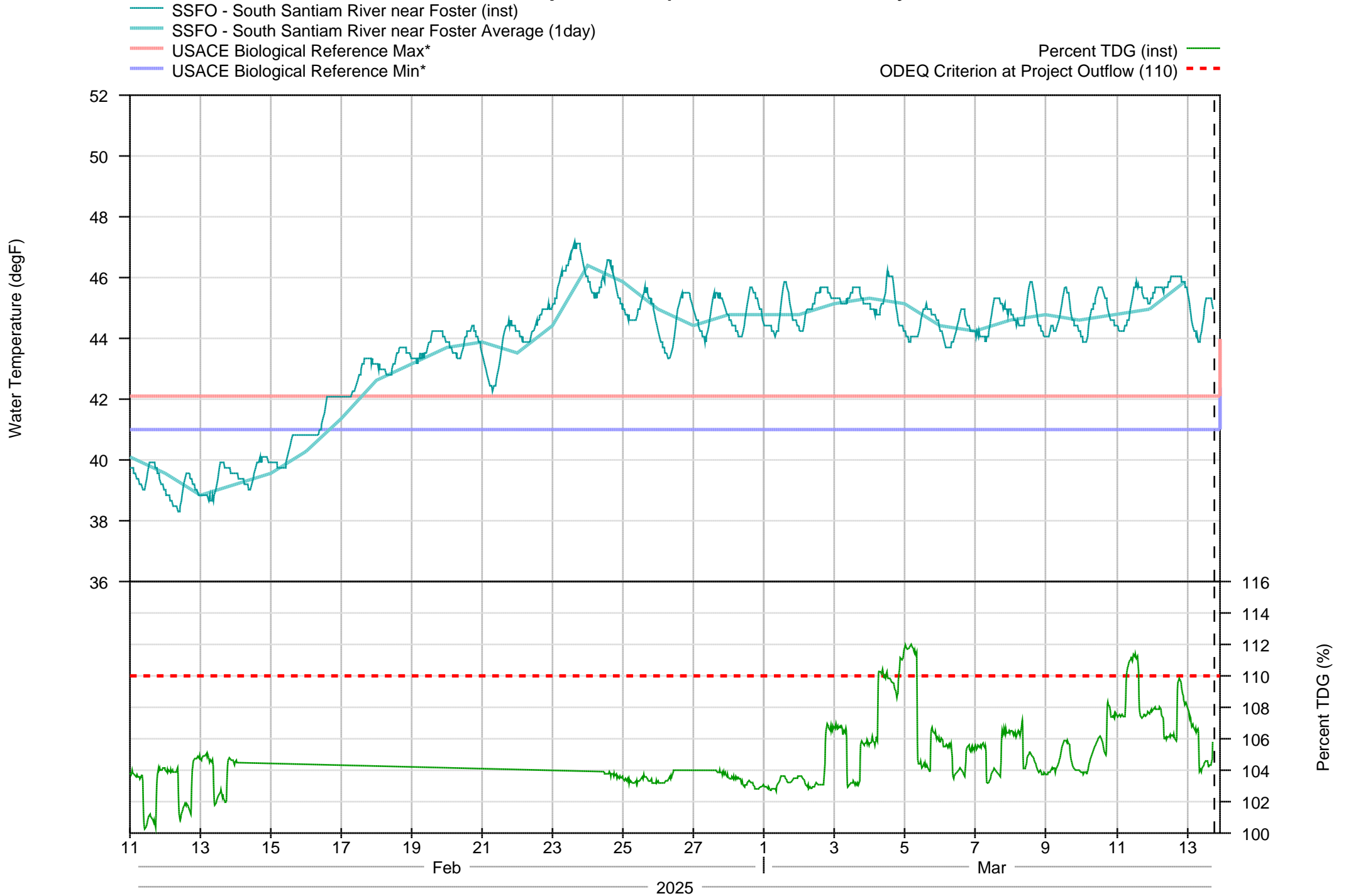
Foster Project Detail - 30 days



Foster Project Annual



Foster Project Temperatures - 30 days



*The USACE Biological References for minimum and maximum temperatures are unofficial guidelines used by the USACE to compare with measured temperatures.

Foster Project Temperatures - 365 days

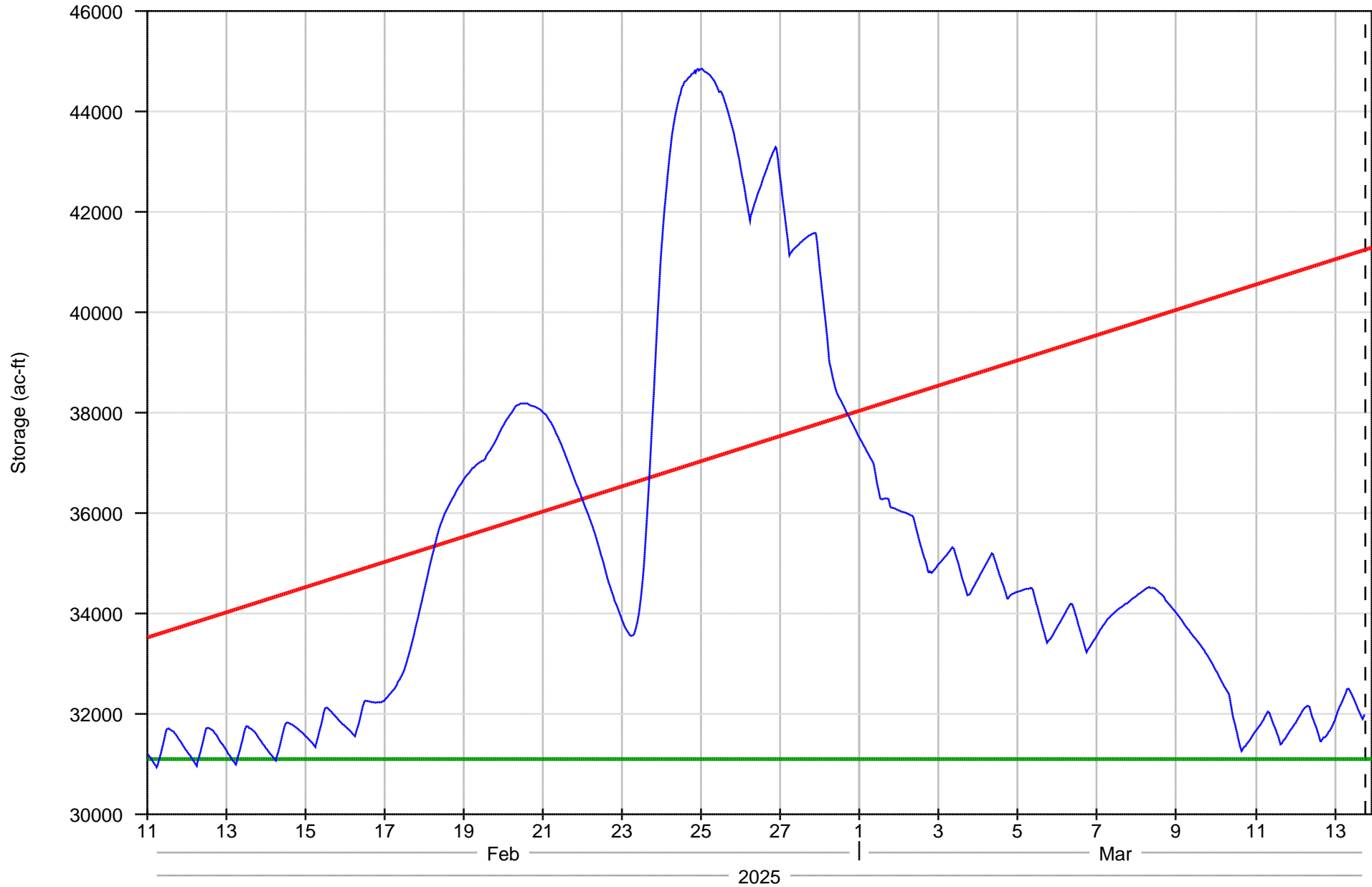
- SSFO - South Santiam River near Foster Average (1day)
- USACE Biological Reference Max*
- USACE Biological Reference Min*



*The USACE Biological References for minimum and maximum temperatures are unofficial guidelines used by the USACE to compare with measured temperatures.

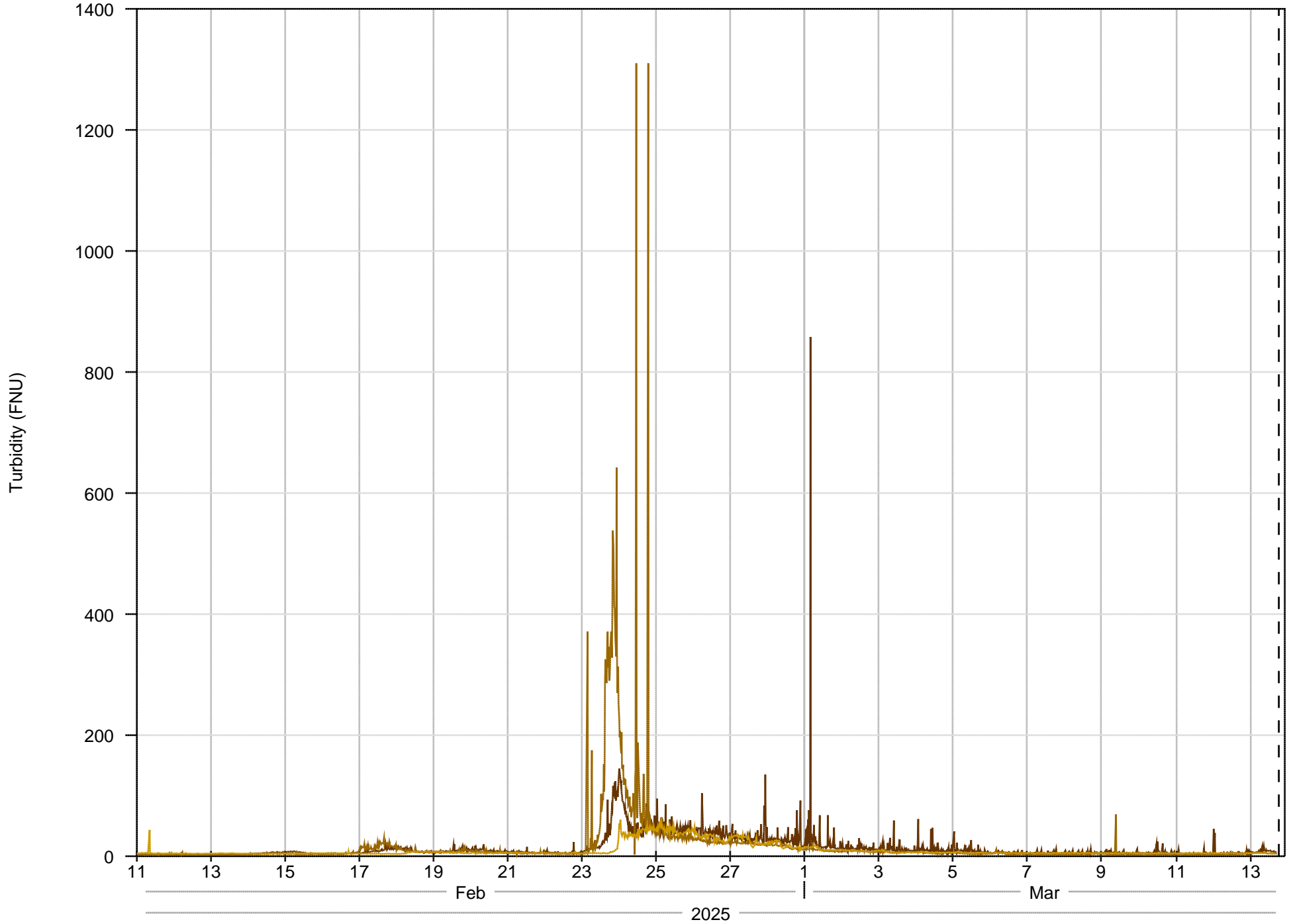
Foster Project Storage - 30 days

- Storage (inst)
- Rule Curve
- Top of Flood (60800)
- Bottom of Multi-Purpose (31100)



Foster Project Turbidity - 30 days

- Forebay Turbidity (inst)
- Tailwater Turbidity (inst)
- Waterloo Turbidity (inst)



Foster Project Turbidity - 365 days

- Forebay Turbidity (inst)
- Tailwater Turbidity (inst)
- Waterloo Turbidity (inst)

