

2013-2014 Hanford Reach Fall Chinook Protection Program (HRFCPP)

HRFCPP Lifestages

	Begin (000 hrs)	End (2400 hrs)
Spawning Period	10/23/2013	11/24/2013
Pre-Hatch Period	10/23/2013	3/7/2014
Post-Hatch Period	12/1/2013	5/20/2014
Emergence Period	3/23/2014	5/21/2014
Rearing Period	3/23/2014	6/21/2014

HRFCPP Constraint dates

HRFCPP Section	Begin (000 hrs)	End (2400 hrs)	Current constraint as of 04/27/14
C.1(c)	10/23/2013	11/24/2013	
C.2	10/23/2013	11/30/2013	
C.3(a)	12/1/2013	3/22/2014	
C.3(b)	12/1/2013	3/22/2014	
C.4(a)	3/23/2014	5/21/2014	Y
C.4(b)	3/23/2014	5/21/2014	Y
C.5(b)(1-5)	3/23/2014	6/21/2014	Y
C.5(b)(6)	5/3/2014	5/25/2014	

	Initiation of spawning	ATUs (celcius) through 04/27/14
<36 kcfs elevation	10/23/2013	1210.2
36-50 kcfs elevation	10/23/2013	1210.2
>50 kcfs elevation	10/23/2013	1210.2
End of spawning	11/24/2013	776.5
Temperature on 04/27/14		8.0
Critical Elevation (kcfs)	65	

Current date

4/29/2014

Data through:

4/27/2014

Exceedances: 0

[Link to TU data](#)

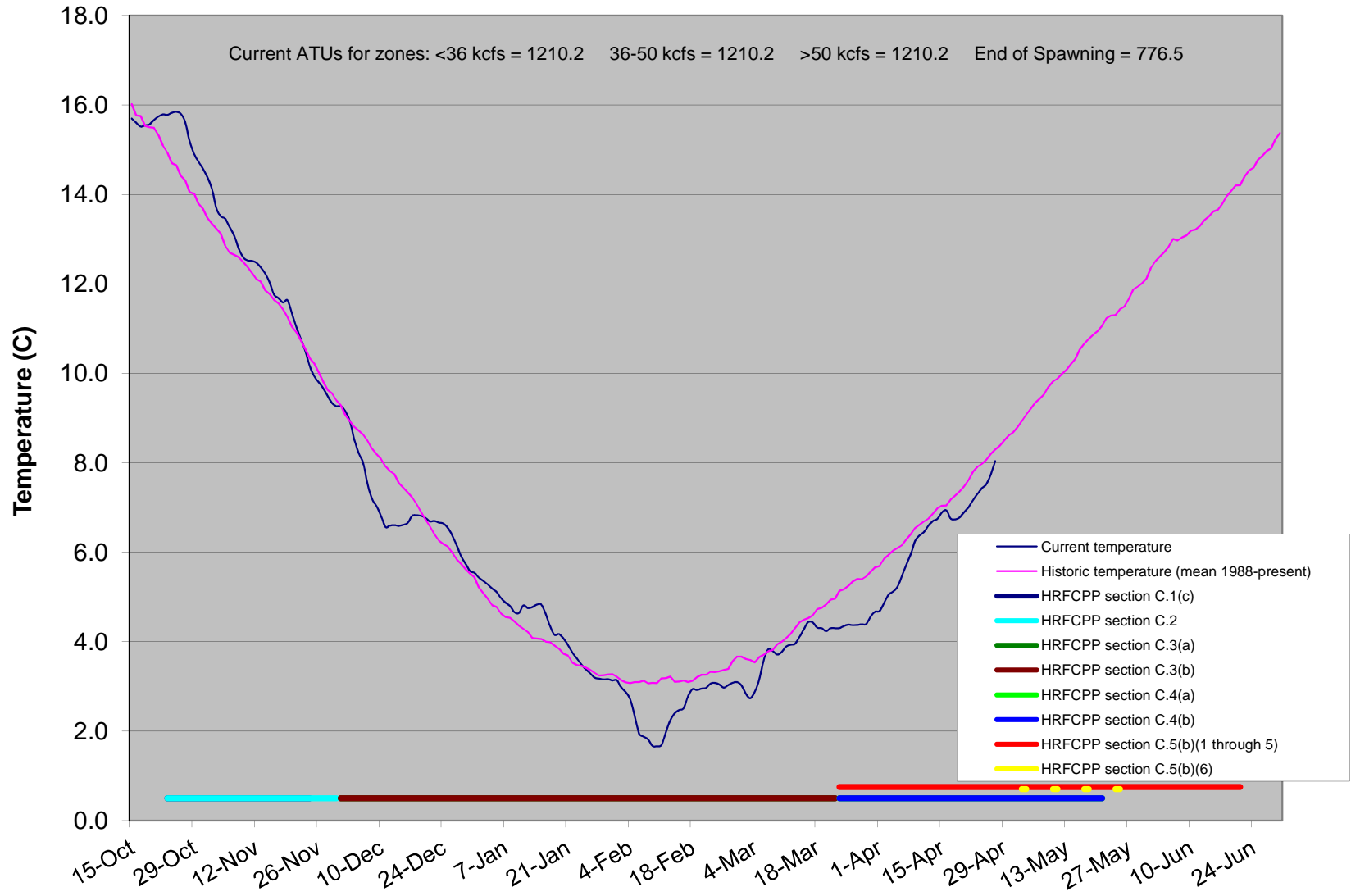
[Link to discharge data](#)

Cell are highlighted in yellow when ATU criteria are met.

Cell are highlighted in red when these constraints are currently in effect

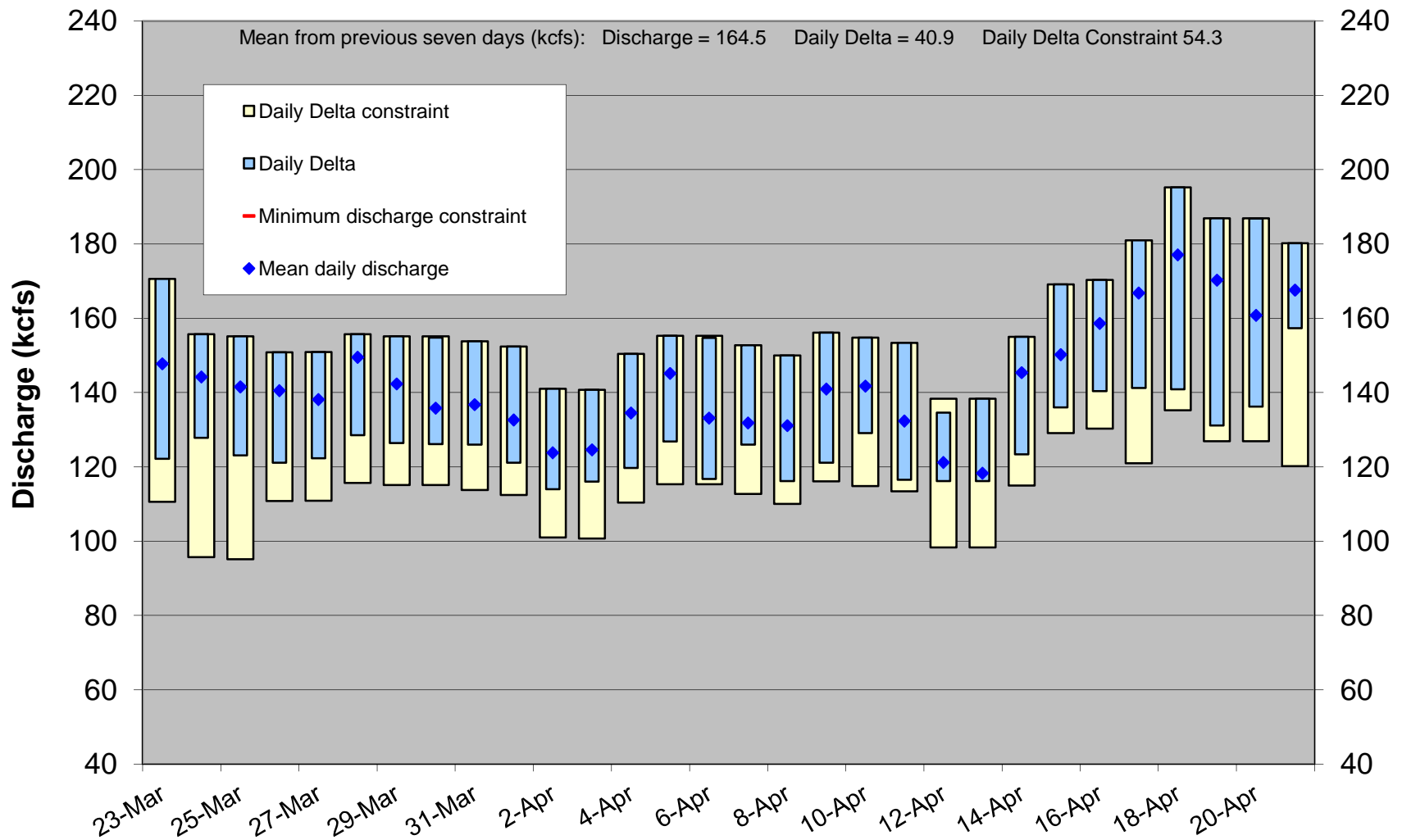
Dates with red text are predicted based on current conditions and data from 1988 to present

2013-2014 PRD Tailrace Temperatures and HRF CPP constraints



Priest Rapids Dam Operations 2014

Number of exceedances: 0



Priest Rapids Dam Operations 2014

Number of exceedances: 0

