



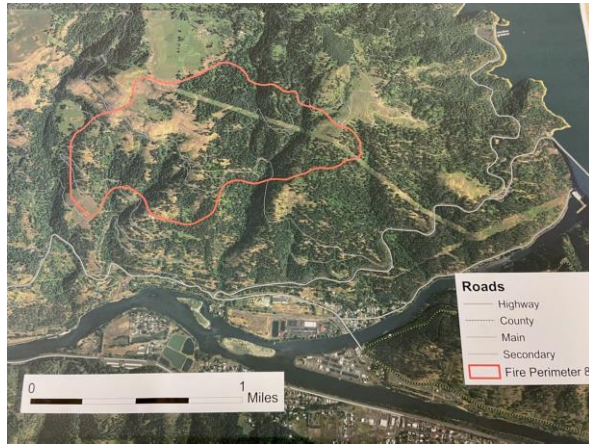
WILDFIRE AT DWORSHAK PROJECT, AHSAKHA IDAHO

WALLA WALLA DISTRICT, NORTHWESTERN DIVISION



US Army Corps
of Engineers®

WHAT: Idaho wildfire
WHEN: 30-31 August
WHERE: Near Dworshak Dam and Reservoir, Ahsakha, Idaho.



Above: A wildfire broke out on August 30 below old Ahsakha Grade, near Dworshak Dam.
Left: Map delineating the 300+ acre fire area in red located approximately 2.5 miles West, Northwest of the Dworshak Dam and Hatchery as of 1 September 2020.



Right: There is currently cloud cover, which is preventing planes from flying and dropping fire retardant, however there is some rain falling on the area.

Below: 500KV transmission lines serving the Dworshak hydroelectric dam are near the fire. The lines remain energized as of 1 September 2020.



Summary:

On 30 August 2020 a wildfire broke out on heavily-wooded land close to Dworshak Dam, a USACE hydroelectric dam on the North Fork of the Clearwater River in west central Idaho. The fire grew to more than 300 acres relatively quickly and several planes were brought in to drop fire retardant and dip water out of the reservoir. One USACE employee who lives near the fire was forced to evacuate and while their home was spared by the blaze reports of several homes being lost have occurred. USACE park volunteers have been evacuated from their campsites to safe ground south of the dam. According to Idaho Department of Lands, a type 3 fire team is expected to arrive the morning of 1 September 20 to gain control of the fire ahead of windy and high temperatures expected later in the week.