

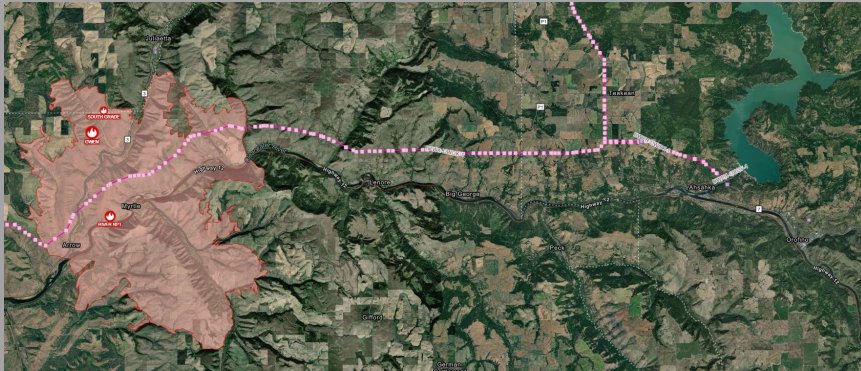
# GWEN WILDFIRE WEST OF DWORSHAK PROJECT– 25 JULY

## WALLA WALLA DISTRICT, NORTHWESTERN DIVISION

**What:** Idaho wildfire near transmission lines

**When:** 24 July, 2024- Continuing

**Where:** Approx. 50 miles West of Dworshak Dam, along both sides of Highway 3.



Extent of Gwen Fire (red) as of 30 July, 2024. Photo Credit: [BPA](#)

*Fire is ongoing, encompasses approximately 29 acres of land and is 10% contained as of the afternoon of 30 July. No updates as of the morning of July 31.*



**US Army Corps  
of Engineers®**

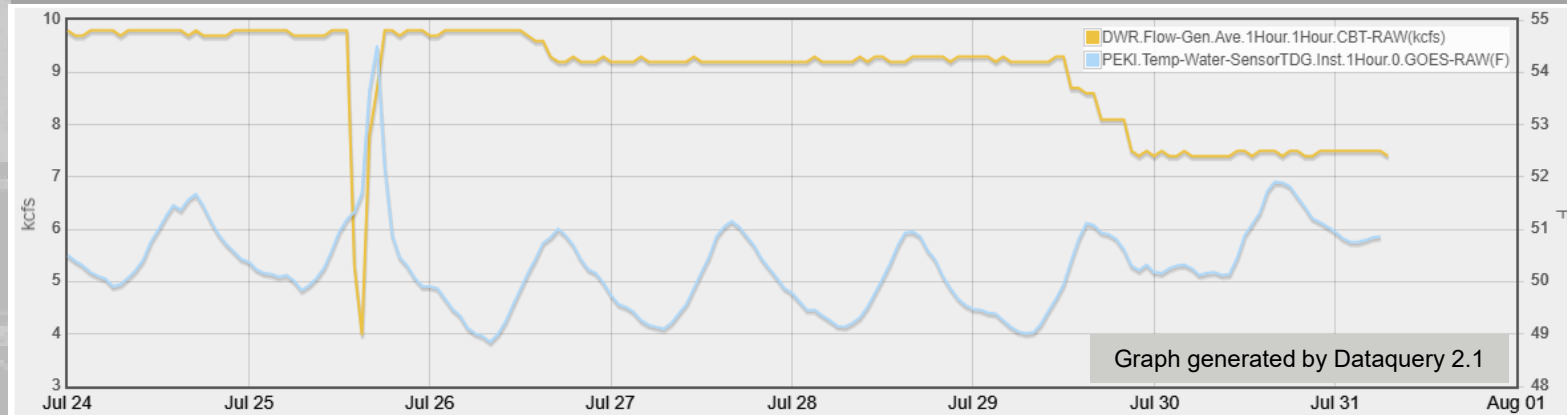
### Key Events

#### July 25:

- **13:24** - Dworshak's 500kv line was dropped from service. Units 2 & 3 were unavailable as a result.
  - Powerhouse capacity: 100MW, 2.2kcfs.
- **15:06** – Unit 2 itself was placed out of service due to an energy surge that caused it to trip offline separately.
  - Powerhouse capacity: 350MW, 7.5kcfs.

• **16:15** - All units at Dworshak were fully back online and discharge began to ramp back up to planned flows of 9.8 kcfs thanks to quick action from Dworshak staff and BPA.

- **18:00** - Dworshak finished ramping back up to planed flows.



### Temperature Impacts

- Temperatures rose approximately 3.5 degrees (measured at the Peki gage) during the outage
- Impact analysis predicts that the temperature spike could have been as high as 10-12 degrees if issue were to persist

### Communication Timeline

- 13:30: Notifications via phone call were made
- 17:19: Regional email was sent out to provide updates on the issue occurring at Dworshak