

Redd Locations – December 12, 2024



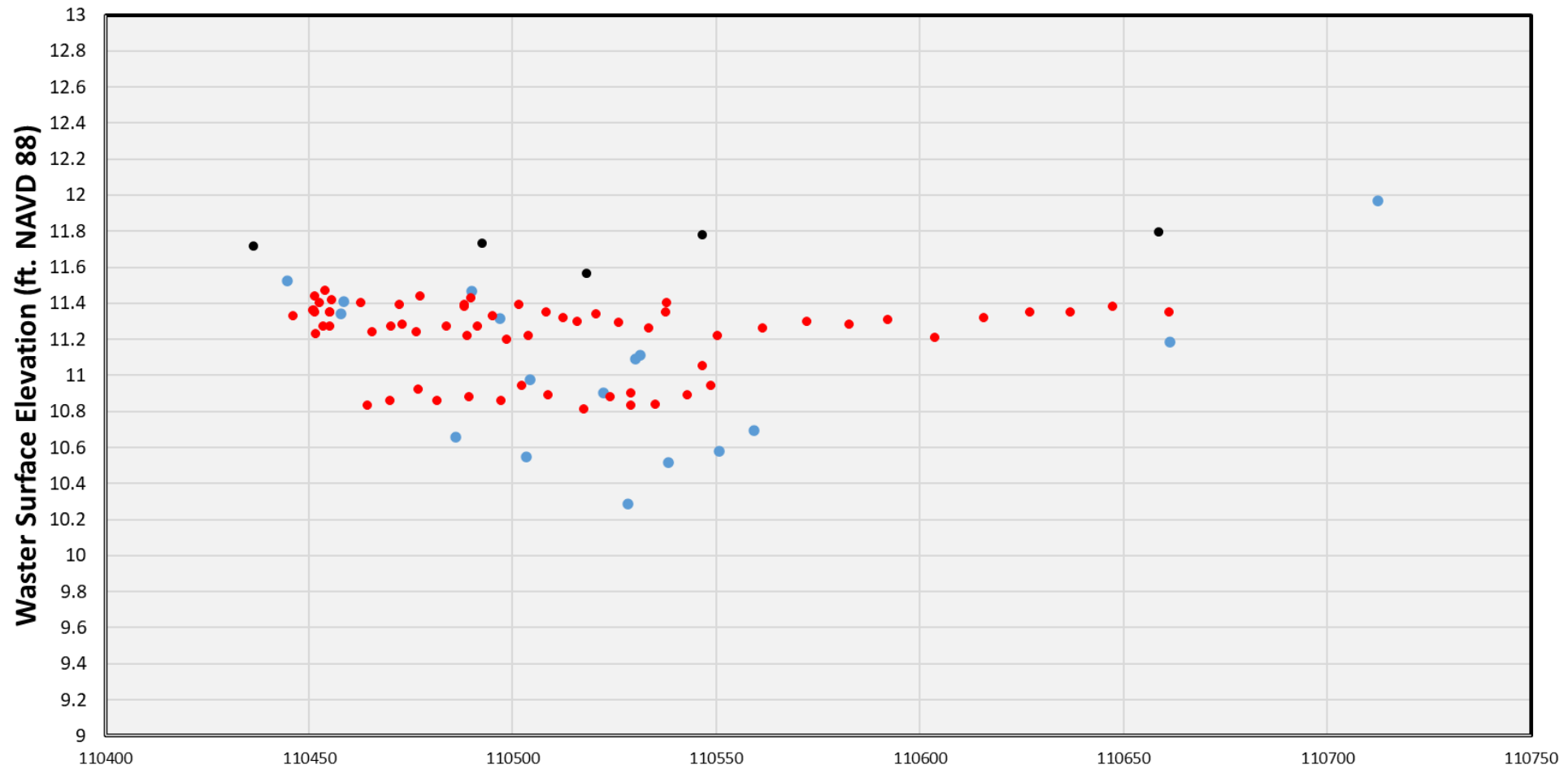
Ives Channel Redd Locations – December 12, 2024



Ives Channel

December 12, 2024 BON TW = 11.6

March 9, 2023 BON TW = 10.4

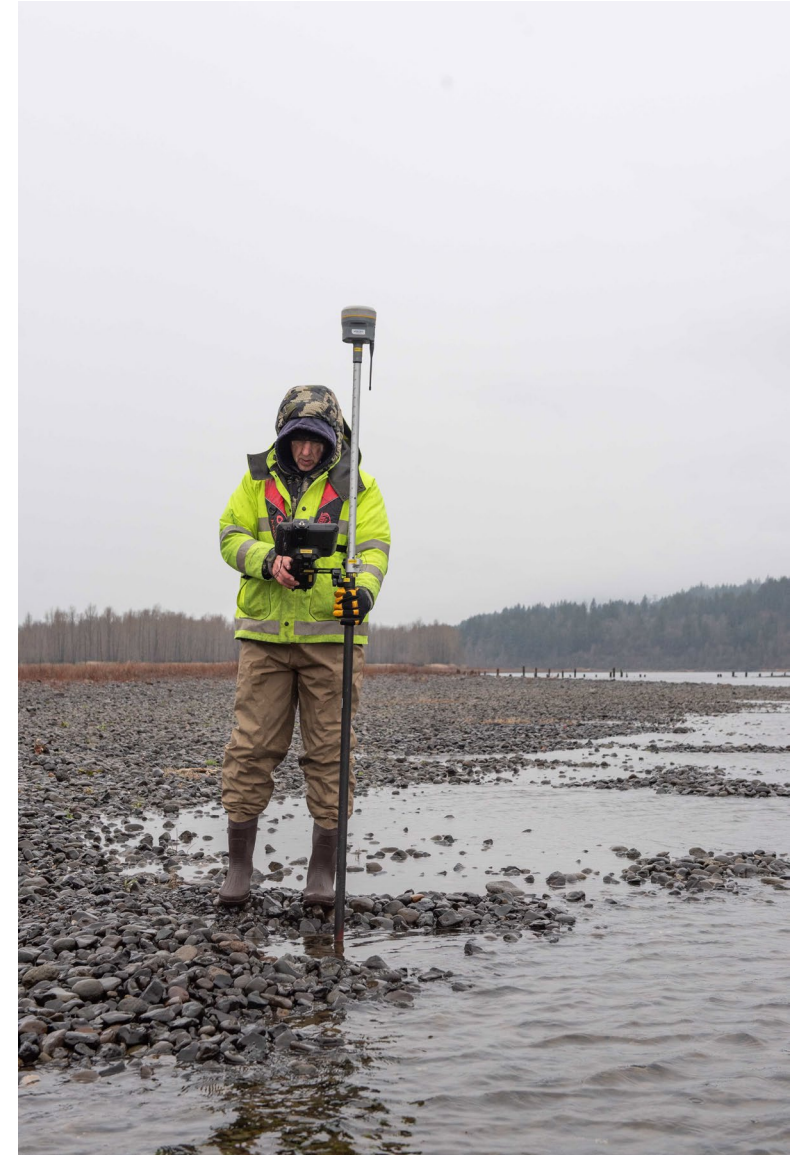


● December 12, 2024 Redd Elevation (ft. NAVD88)

● December 12, 2024 Water Surface Elevation (ft. NAVD88)

● March 9, 2023 Water Surface Elevation (ft. NAVD88)

Ives Channel – December 12, 2024



Ives Channel – December 12, 2024



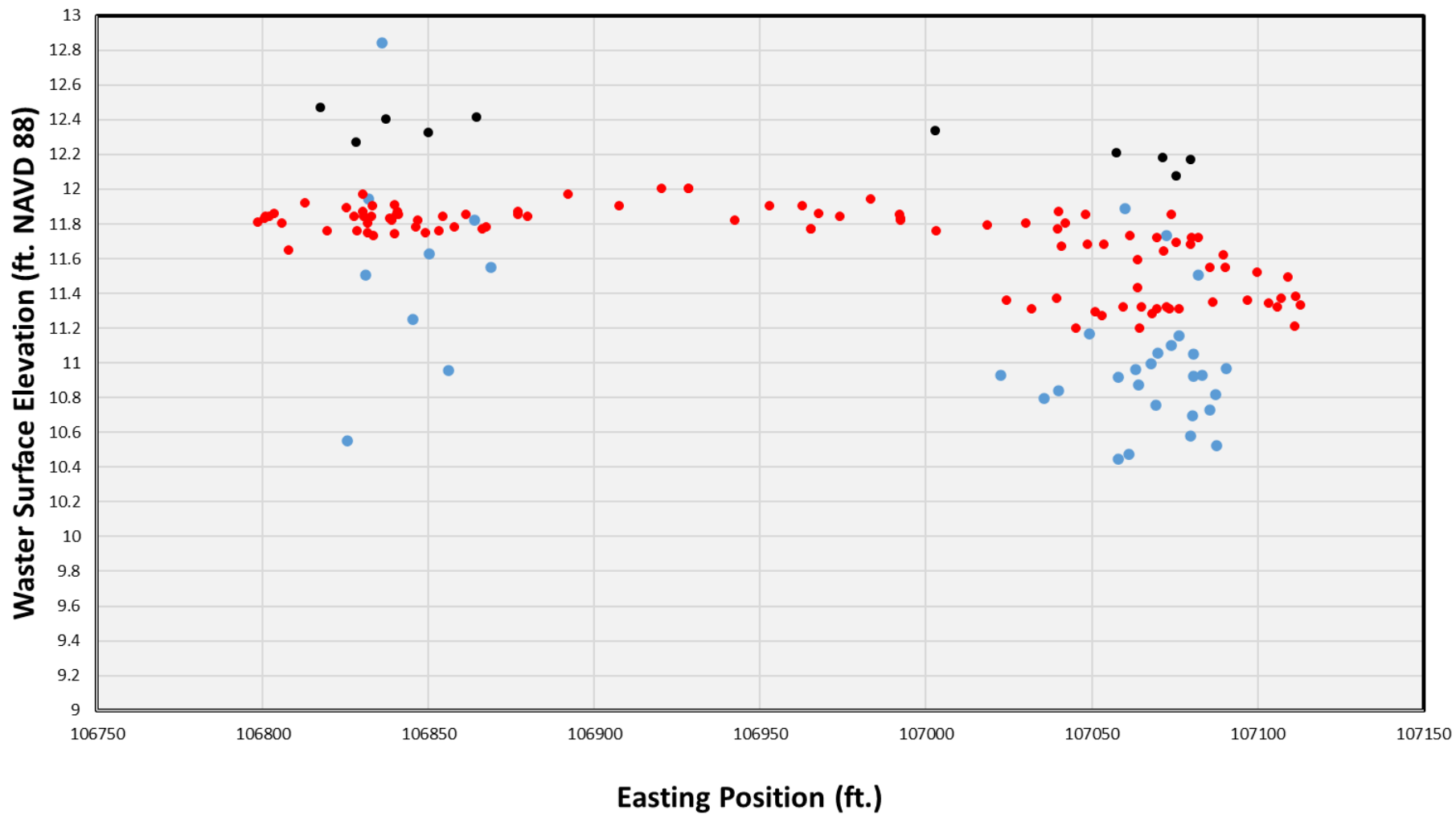
McCord Creek Redd Locations – December 12, 2024



McCord Creek

December 12, 2024 BON TW = 11.6

March 9, 2023 BON TW = 10.5



● December 12, 2024 Redd Elevation (ft. NAVD88) ● December 12, 2024 Water Surface Elevation (ft. NAVD88) ● March 9, 2023 Water Surface Elevation (ft. NAVD88)

McCord Creek – December 12, 2024



McCord Creek – December 12, 2024



McCord Creek – December 12, 2024



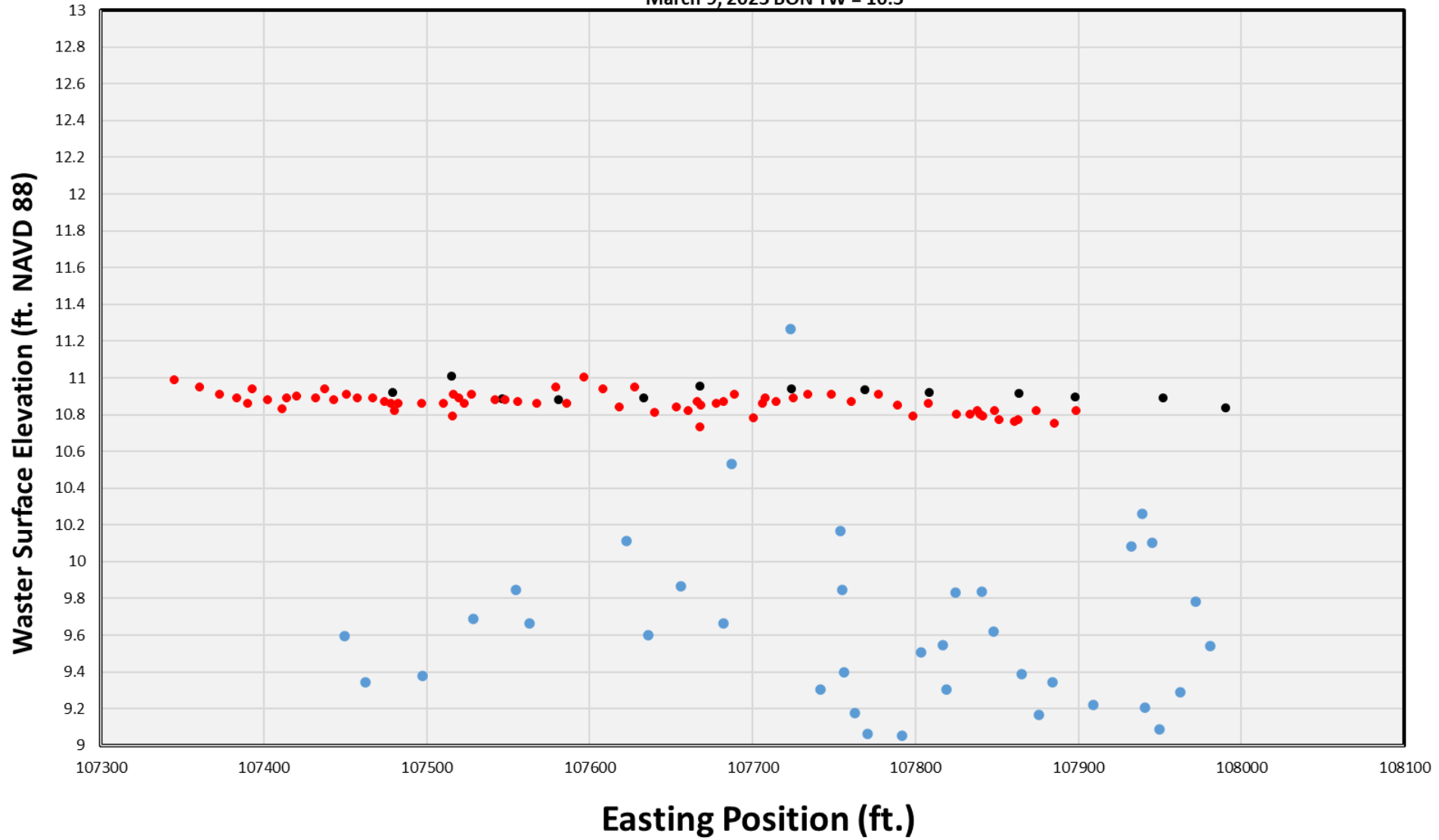


Woodard Creek Redds – December 12, 2024

Woodard Creek

December 12, 2024 BON TW = 11.6

March 9, 2023 BON TW = 10.3



● December 12, 2024 Redd Elevation (ft. NAVD88)

● December 12, 2024 Water Surface Elevation (ft. NAVD88)

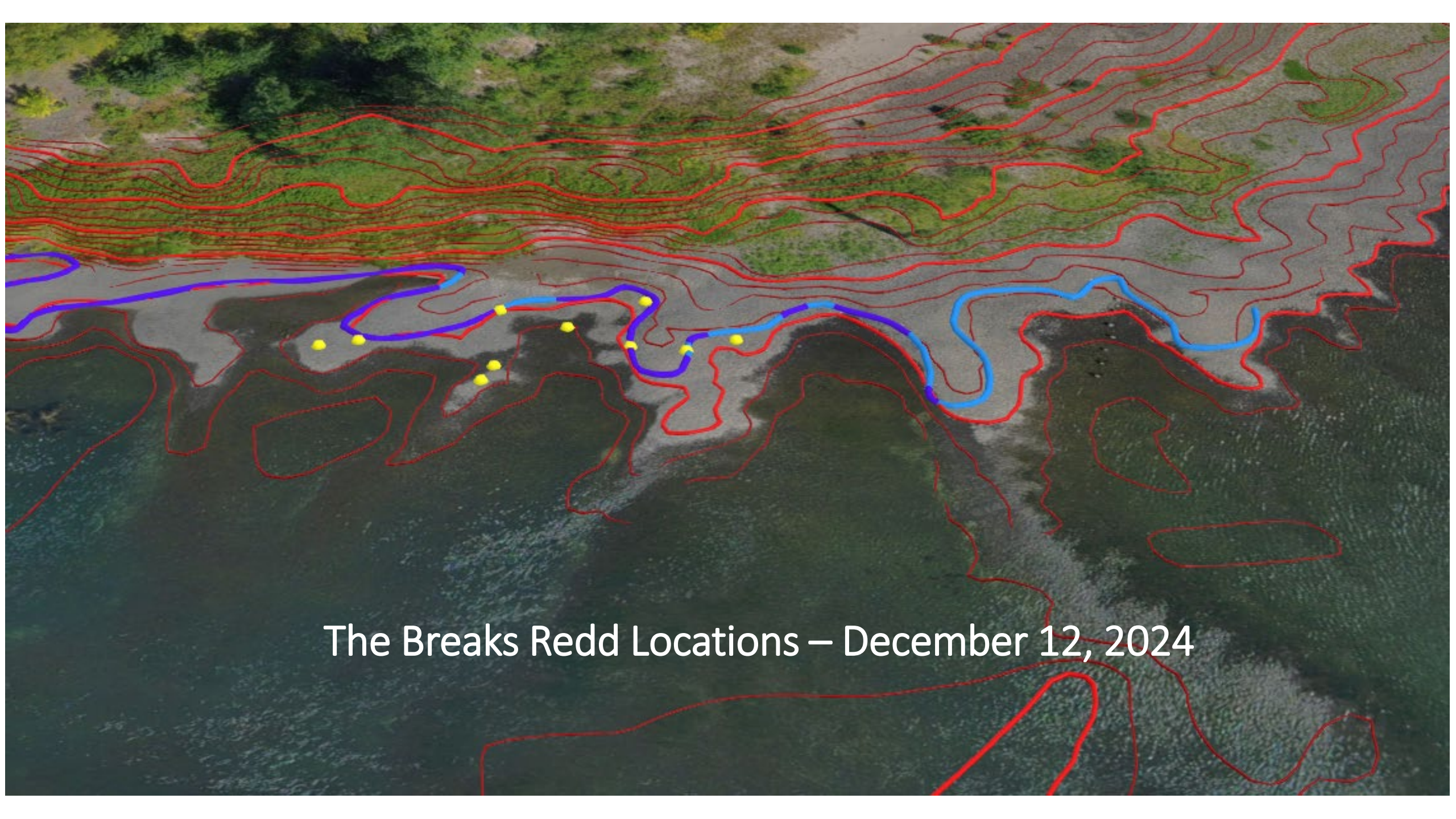
● March 9, 2023 Water Surface Elevation (ft. NAVD88)

**Woodard Creek –
December 12, 2024**



**Woodard Creek –
December 12, 2024**



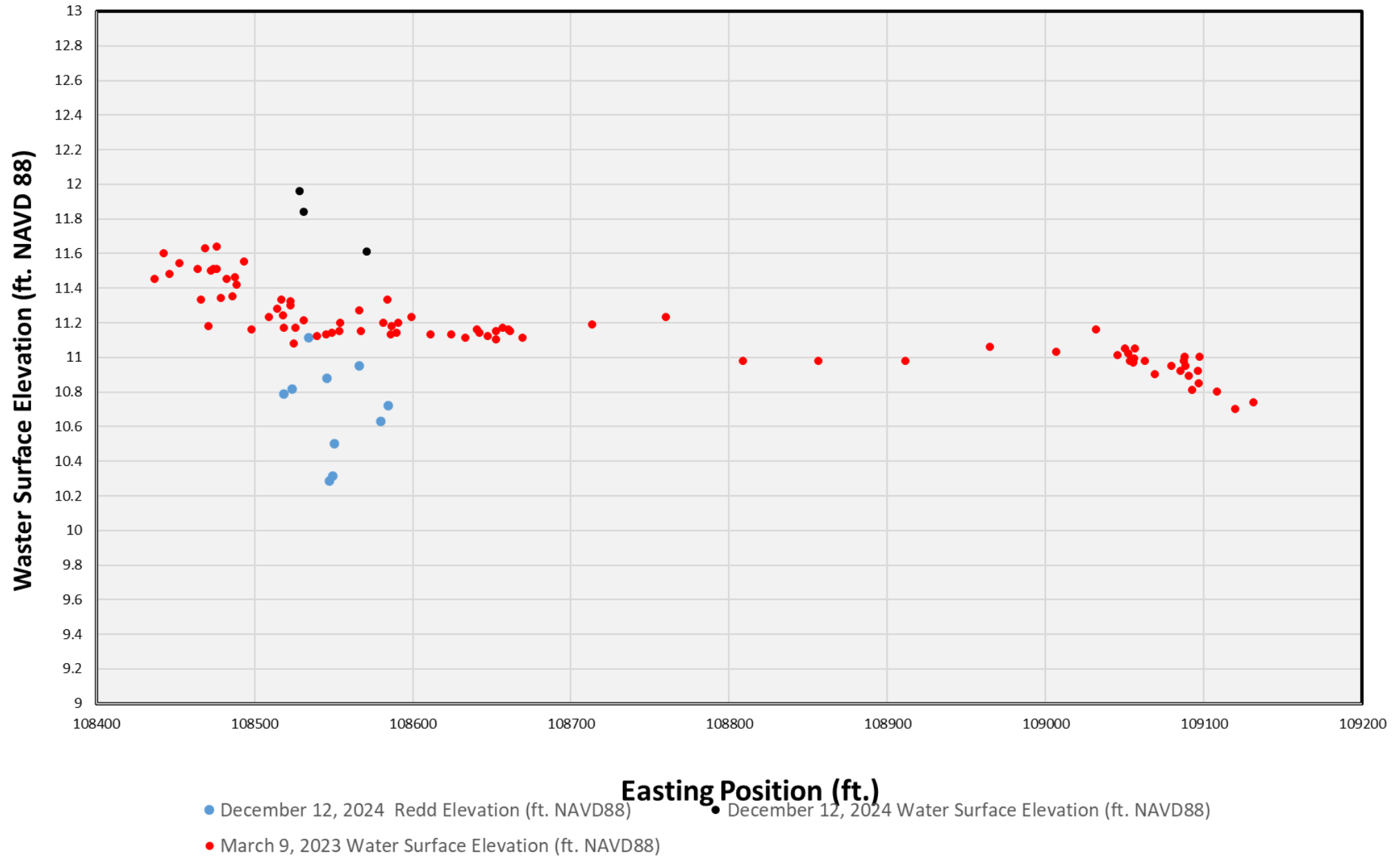


The Breaks Redd Locations – December 12, 2024

Breaks

December 12, 2024 BON TW = 11.6

March 9, 2023 BON TW = 10.5



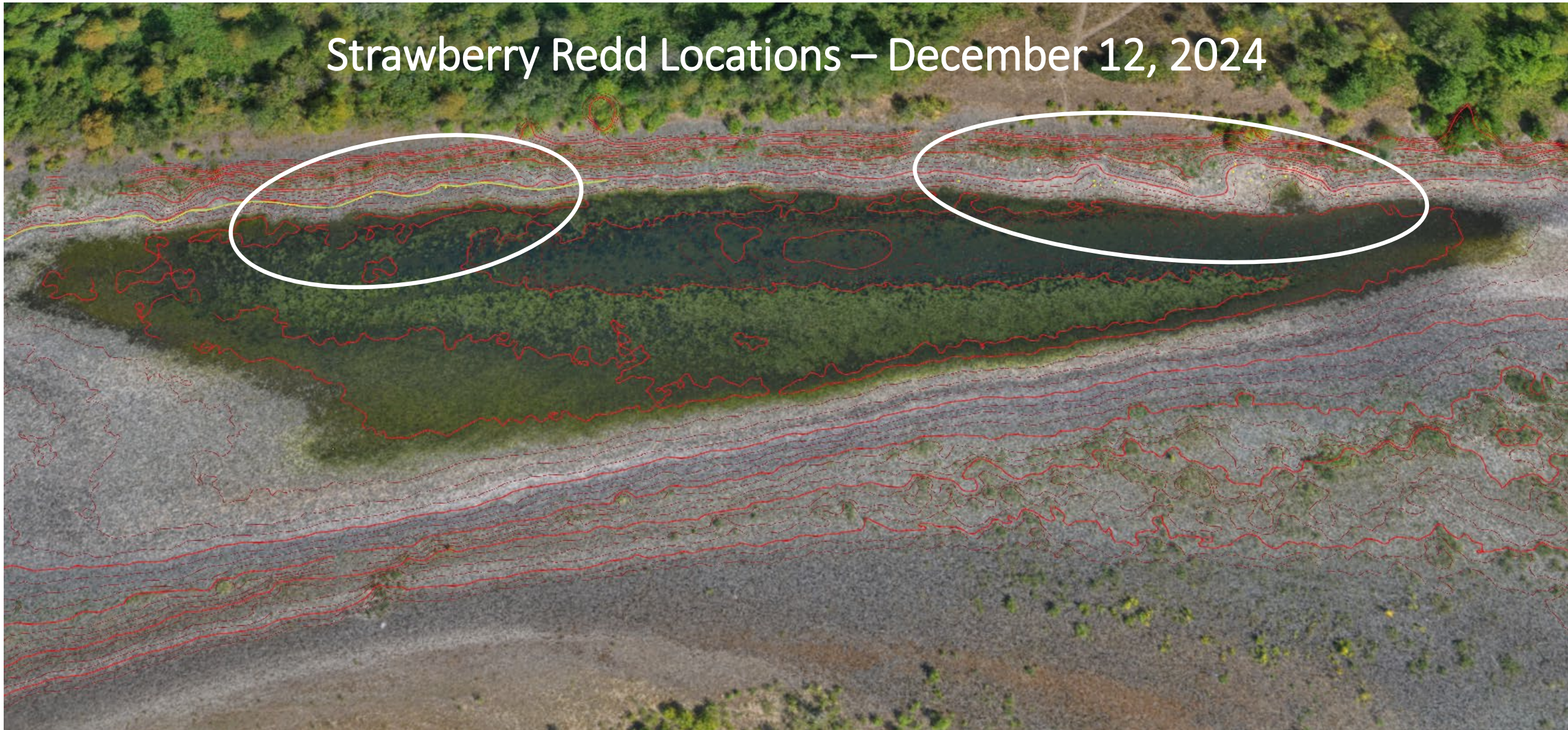
The Breaks – December 12, 2024



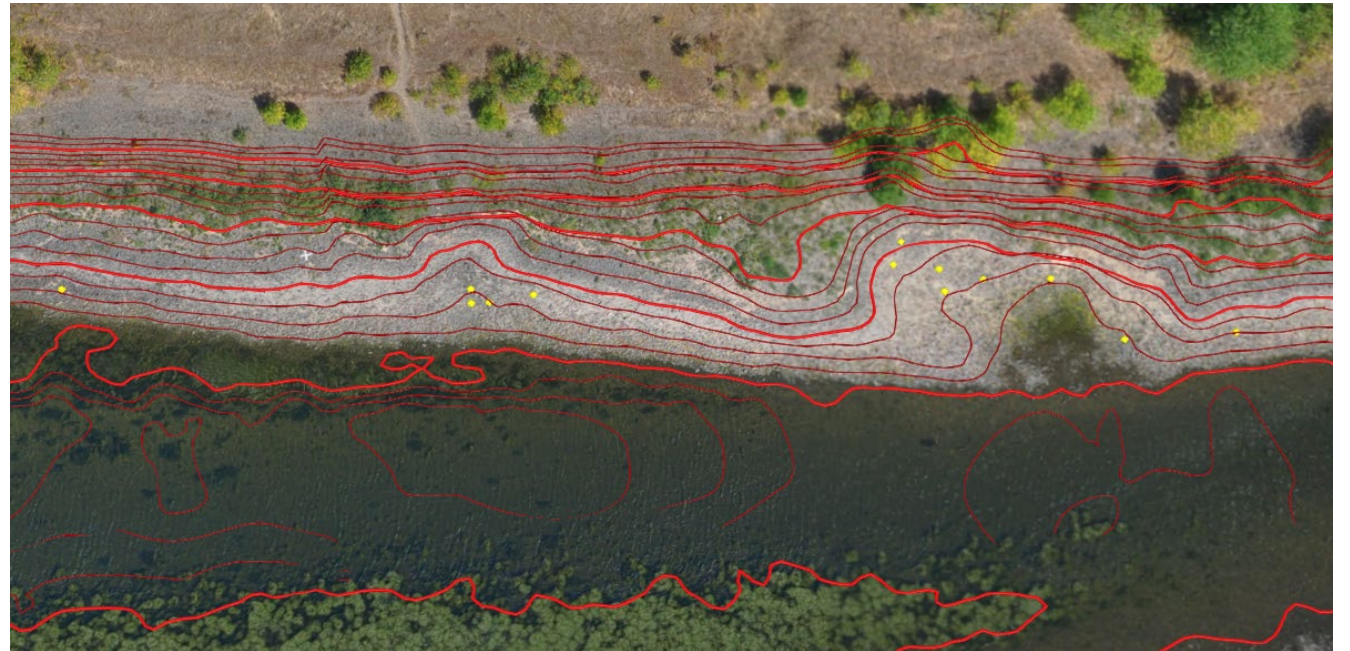
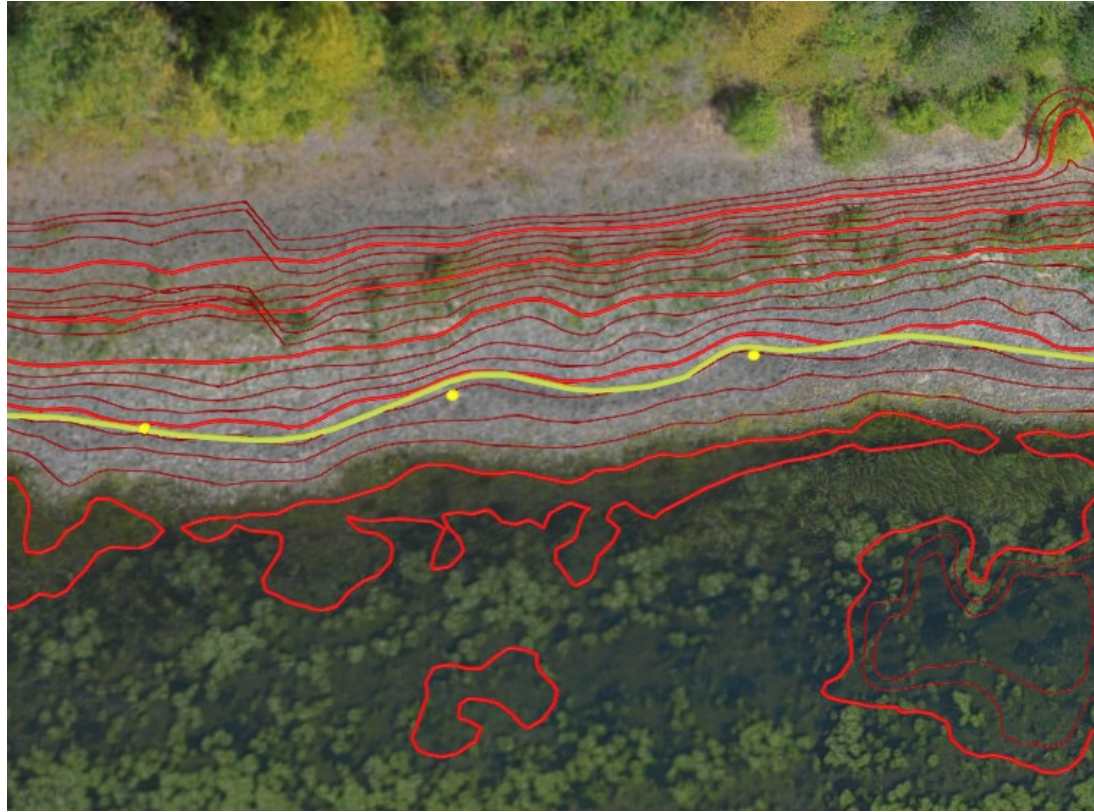
The Breaks – December 12, 2024



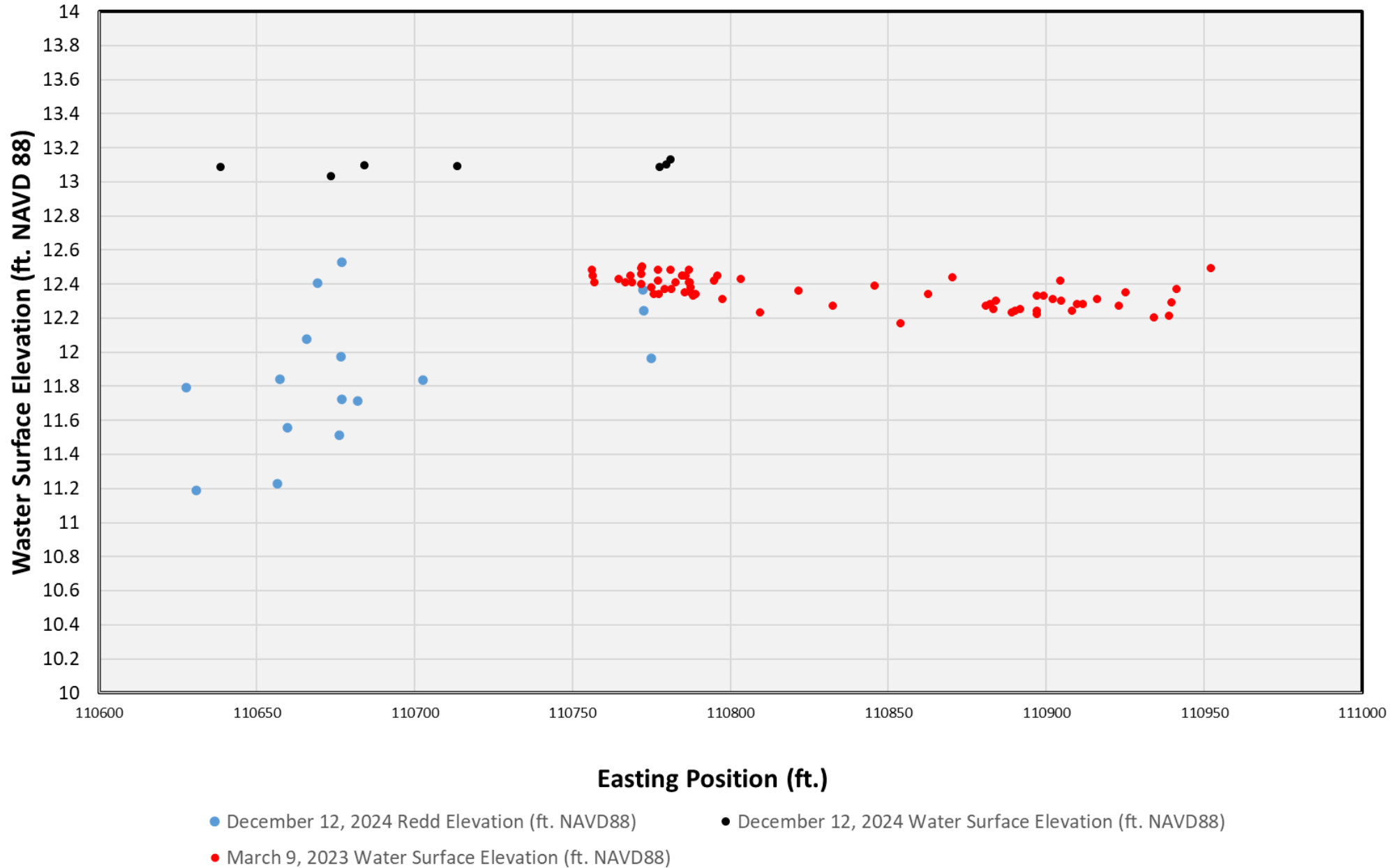
Strawberry Redd Locations – December 12, 2024



Strawberry Redd Locations – December 12, 2024



Strawberry
December 12, 2024 BON TW = 11.6
March 9, 2023 BON TW = 10.4



**Strawberry –
December 12, 2024**



**Strawberry –
December 12, 2024**

