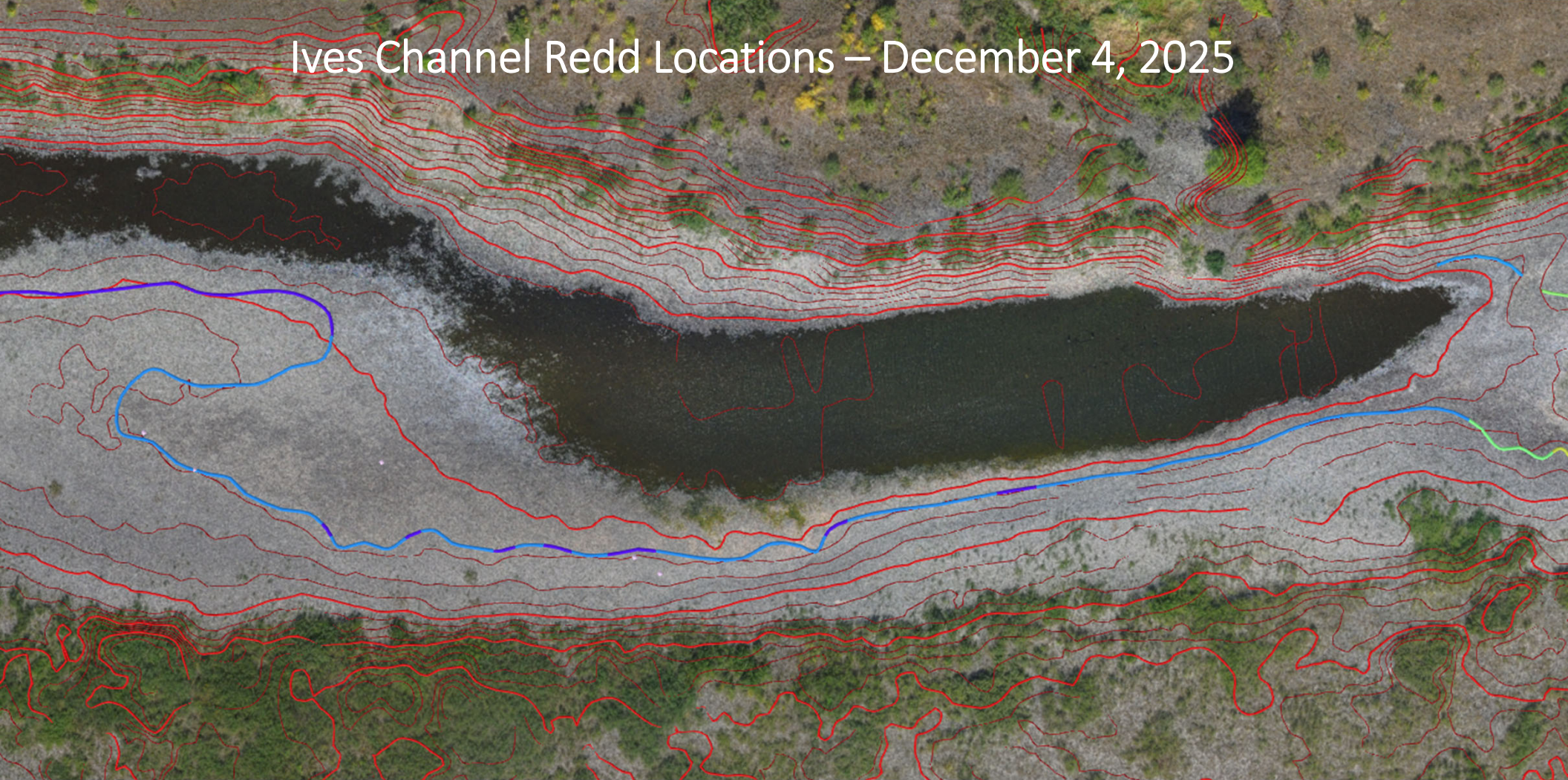


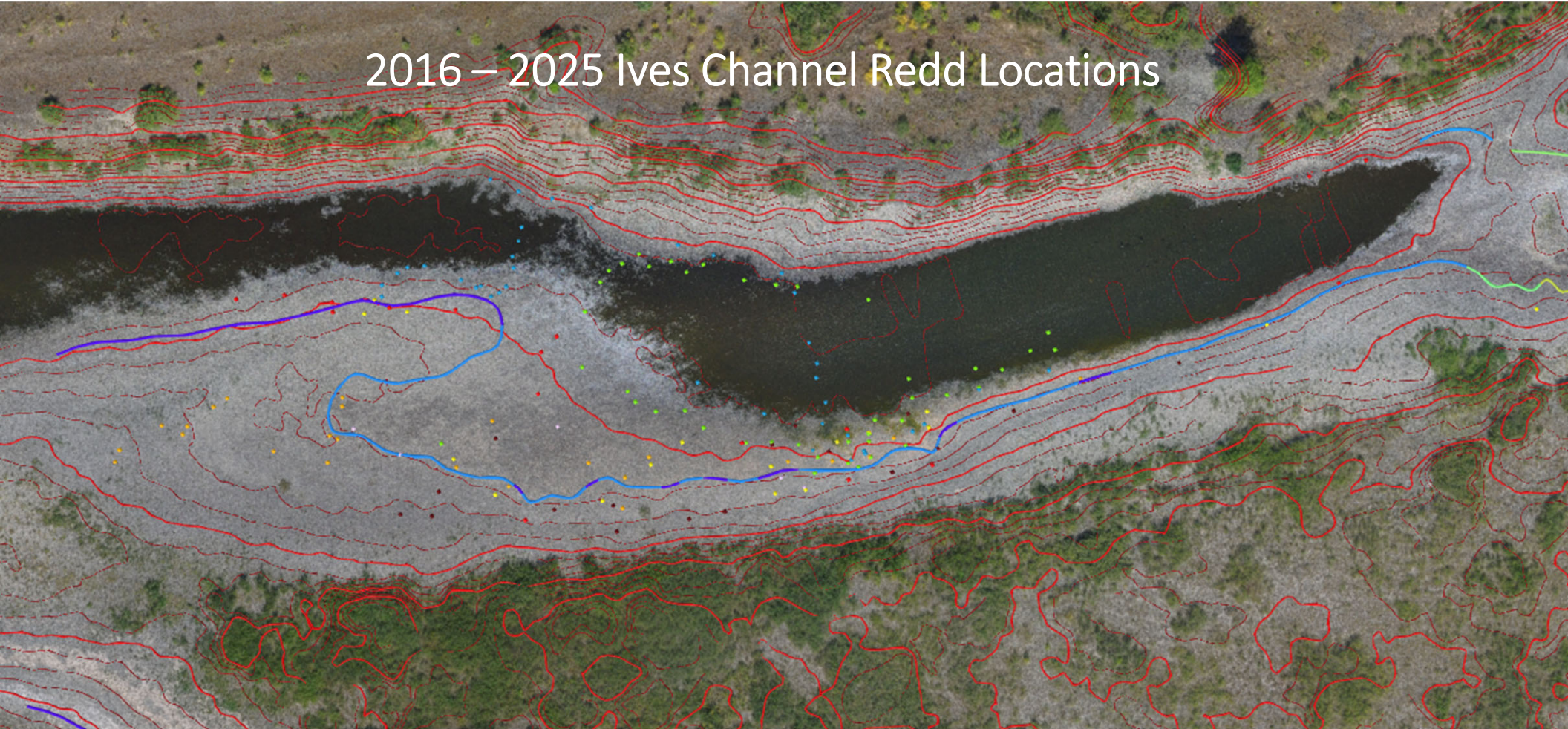
2025 Redd Locations – December 4, 2025



Ives Channel Redd Locations – December 4, 2025



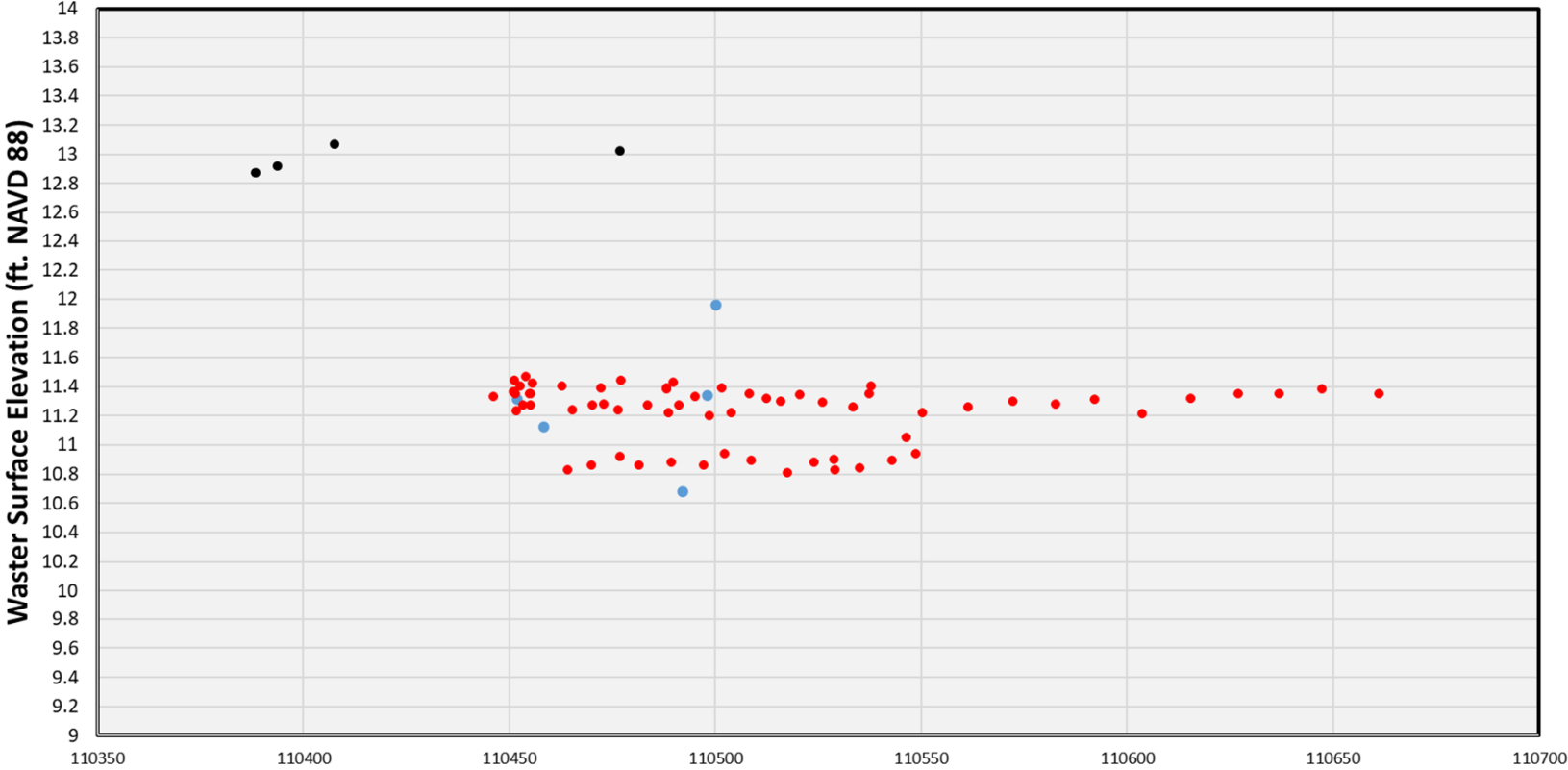
2016 – 2025 Ives Channel Redd Locations



Ives Channel 2025

December 4, 2025 BON TW = 12.8

March 9, 2023 BON TW = 10.4



- December 4, 2025 Redd Elevation (ft. NAVD88)
- December 4, 2025 Water Surface Elevation (ft. NAVD88)
- March 9, 2023 Water Surface Elevation (ft. NAVD88)

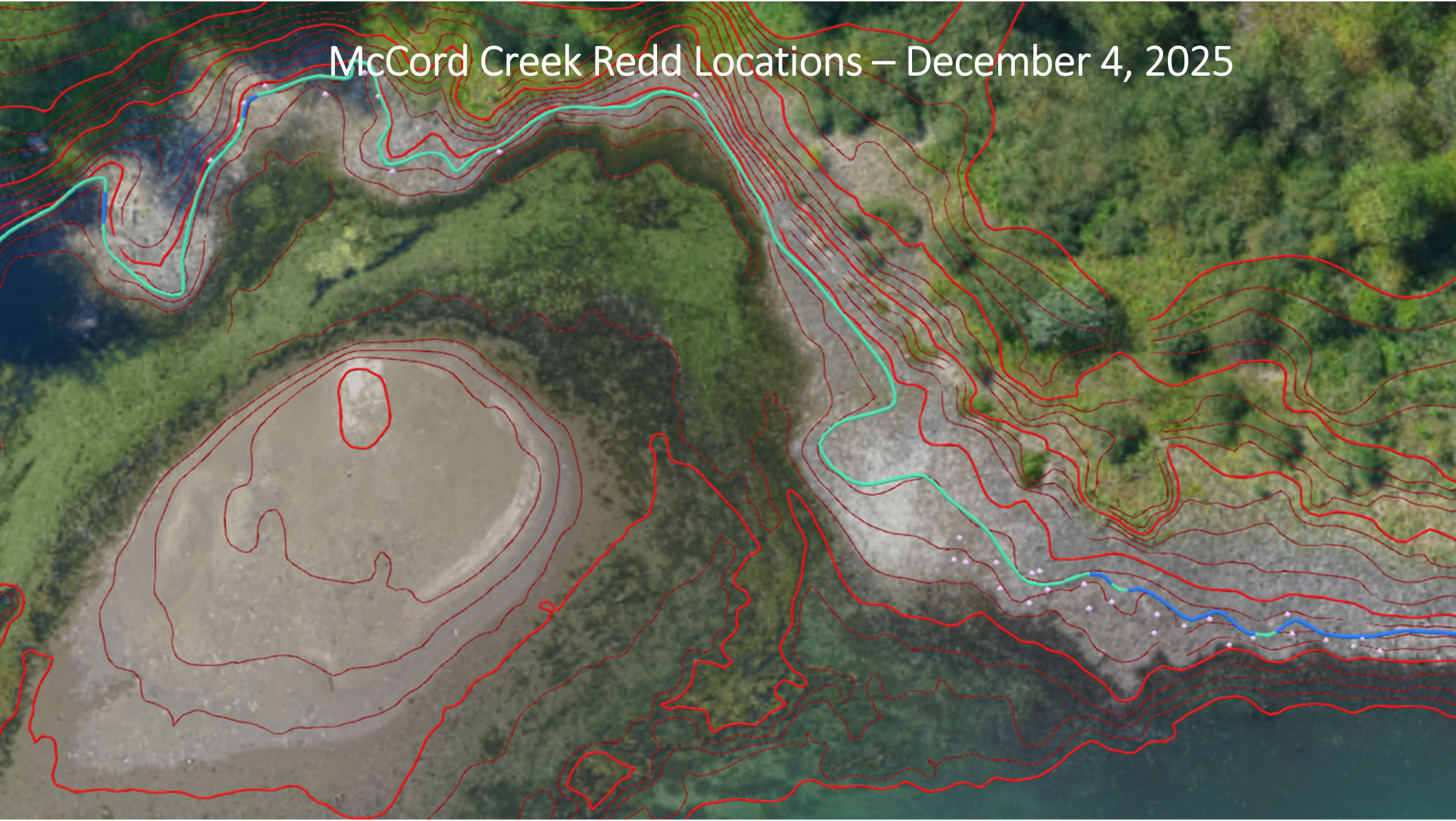
Ives Channel – December 4, 2025



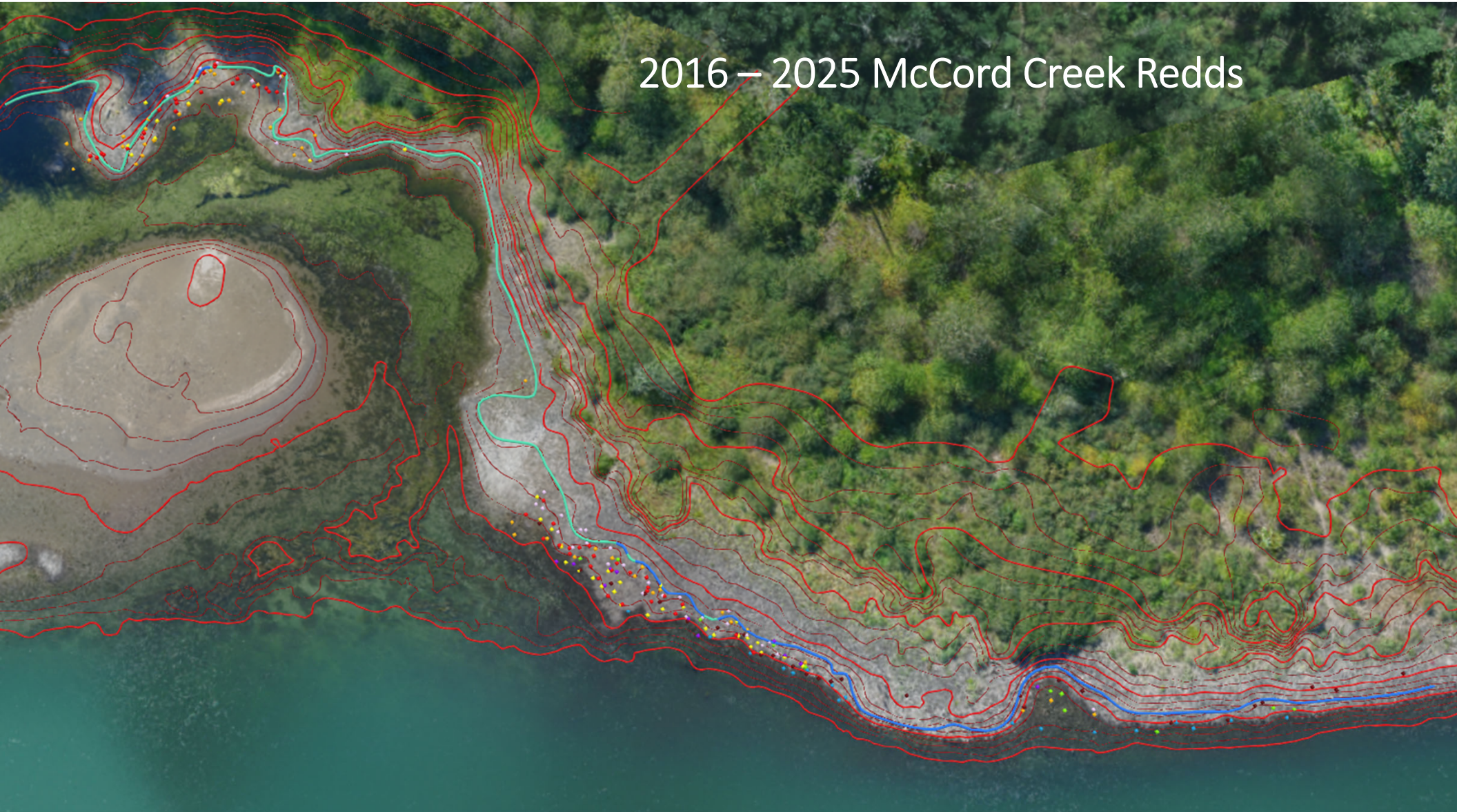
Ives Channel – December 4, 2025



McCord Creek Redd Locations – December 4, 2025



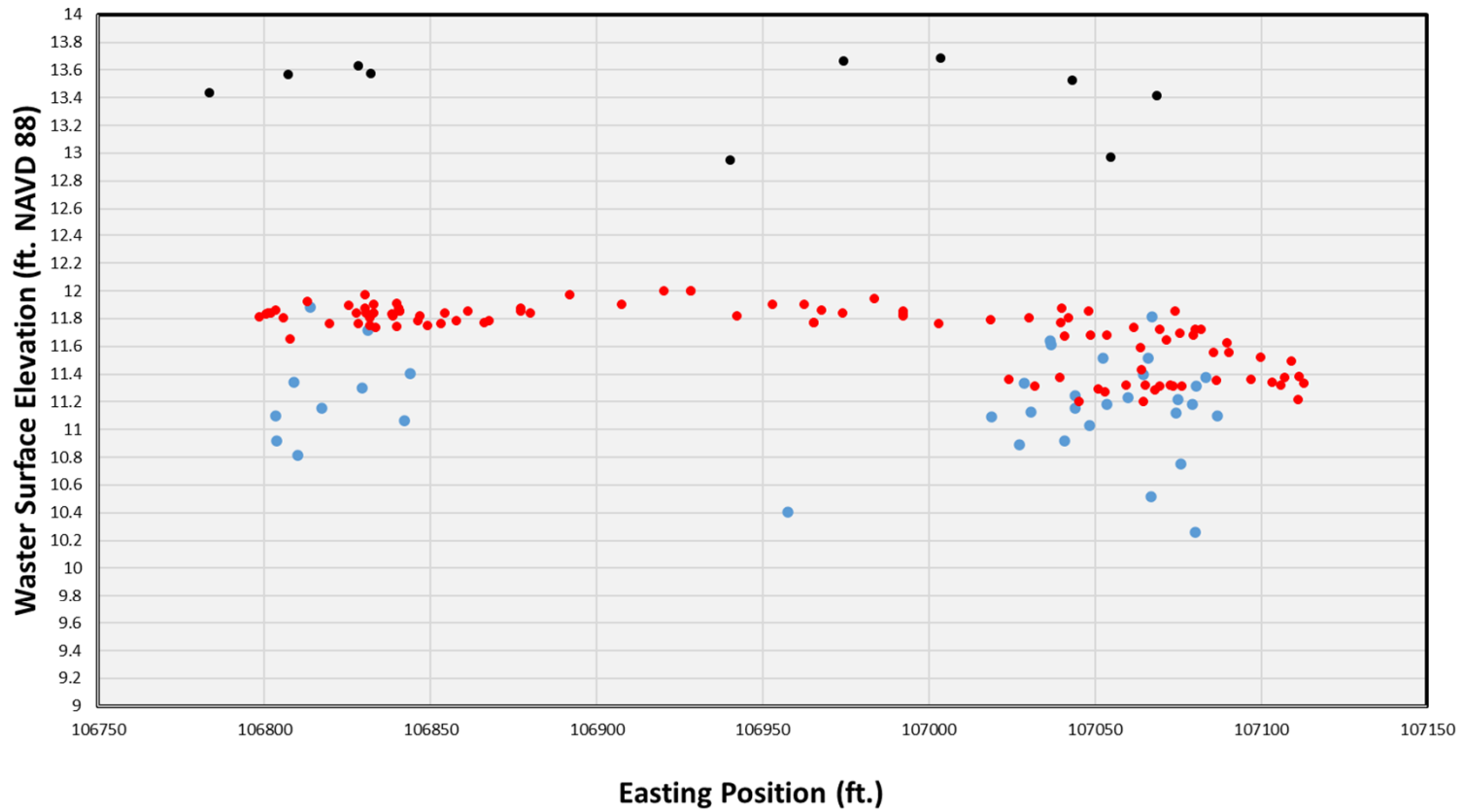
2016 – 2025 McCord Creek Redds



McCord Creek 2025

December 4, 2025 BON TW = 12.8

March 9, 2023 BON TW = 10.5

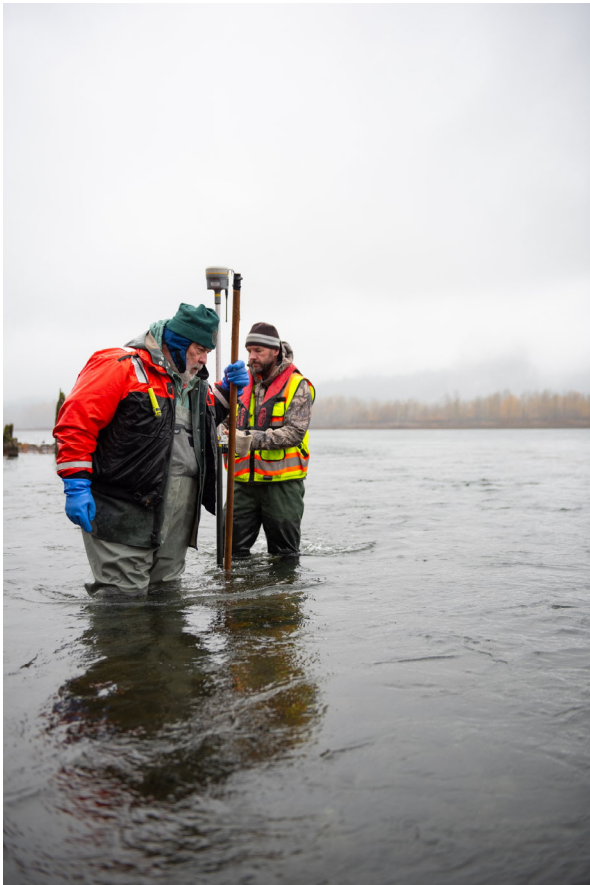


● December 4, 2025 Redd Elevation (ft. NAVD88) ● December 4, 2025 Water Surface Elevation (ft. NAVD88) ● March 9, 2023 Water Surface Elevation (ft. NAVD88)

McCord Creek – December 04, 2025



McCord Creek – December 4, 2025



McCord Creek – December 4, 2025





Woodard Creek Redds – December 4, 2025

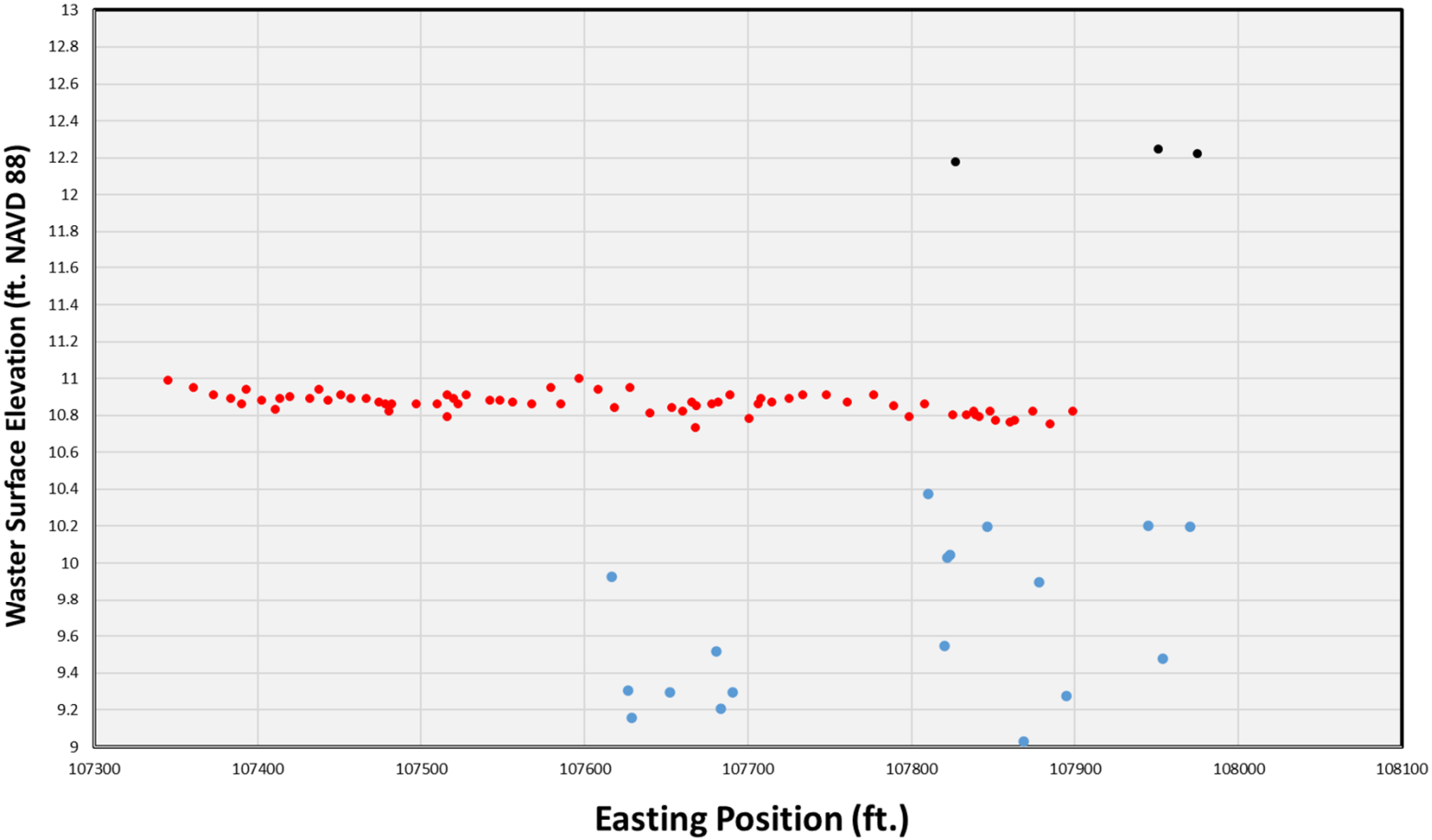


2016 -2025 Woodard Creek Redds

Woodard Creek 2025

December 4, 2025 BON TW = 12.8

March 9, 2023 BON TW = 10.3



● December 4, 2025 Redd Elevation (ft. NAVD88)

● December 4, 2025 Water Surface Elevation (ft. NAVD88)

● March 9, 2023 Water Surface Elevation (ft. NAVD88)

**Woodard Creek –
December 4, 2025**



**Woodard Creek –
December 4, 2025**



2025 Bonneville Spawning Phase of Chum Operation

