

## COLUMBIA RIVER TECHNICAL MANAGEMENT TEAM

June 10, 2026

Facilitator's Summary

Facilitation Team: Emily Stranz & Colby Mills, DS Consulting

*The following Facilitator's Summary is intended to capture basic discussion, decisions, and actions, as well as point out future actions or issues that may need further discussion at upcoming meetings; it is not intended to be the "record" of the meeting. Official minutes can be found on the TMT website: <https://public.crohms.org/tmt/agendas/2026/>. Suggested edits for the summary are welcome and can be sent to Colby at [colby@dsconsult.co](mailto:colby@dsconsult.co).*

### Review Meeting Summaries & Minutes

TMT Members will review the official meeting minutes and facilitator's summaries for May 21, 26, 27, and June 1, 2, 3 at the next TMT meeting.

### Official June Water Supply Forecast

Chris Runyan, Reclamation, reported the official June water supply forecasts (WSF) for Hungry Horse Dam (HGH), noting above average precipitation in the Flathead Basin last month, and at the end of May especially with a significant rain event which improved forecast conditions.

June through July is 719 kaf, or 79% of average; April through August is 2,013 kaf, or 98% of average; May through September is 1,651 kaf, or 93% of average; and January through July is 2,451 kaf, or 110% of average. Chris added that the high January through July value is due to a wet, warm winter and some runoff already captured in reservoir conditions.

Doug Baus, Corps, reported the official May WSF for Corps of Engineers projects:

- **The Dalles (TDA):** NWRFC April through August volume forecast is 78 maf, or 88% of average.
- **Lower Granite (LWG):** NWRFC April through July volume forecast is 13 maf, or 67% of average.
- **Libby (LIB):** Corps June runoff forecast (April through August) is 7,064 kaf, or 116% of average.
- **Dworshak (DWR):** NWRFC April through July volume forecast is 1,814 kaf, or 73% average.

### Draft Summer Spill Priority List

Dan Turner, Corps, reported the draft summer spill priority list (SPL) in preparation for the start of summer spill at the lower Columbia projects next week, with Snake River operations starting the following week. He reminded the group that the SPL manages lack of load spill on the system; level 1 is the Water Quality Standard (WQS). The draft SPL is the same as last year, with one change to the example spill level at Lower Monumental (LMN) in Level 1 to clarify what that number represents. Tom Lorz, CTUIR/FPAC Chair, noted the revised example made the operating sequence clearer and appreciated the update; no additional changes were requested. The SPL is a living document that may be revisited throughout the season as necessary.

### FPAC Request for Treaty Flow Augmentation

Tom reported FPAC's request for treaty flow following analysis of the latest ESP. Salmon Managers request the start of Canadian flow augmentation next week, ideally Tuesday, with a Saturday start also acceptable. Tony Norris, BPA, clarified that Treaty weeks begin on Saturday and that flow operations are always coordinated through the week and finalized on Friday for a Saturday start. He also confirmed that 8,000 cfs per/day is the maximum request available in June. They agreed the request would be for an

8,000 cfs start beginning this coming Saturday, Tom asked BPA to share documentation or process details so future recommendations align with BPA’s operating timeline.

### **Adult Passage**

Tom reviewed discussions held over the multiple unscheduled meetings from the prior week regarding a potential adult passage delay at John Day Dam (JDA). The operational change included reducing spill to 45% for 8 hours, followed by a barge-related operational adjustment that reduced overall flow and spill. Operations later returned to 125% spill. He added that “black dots” had not been observed for the last couple of days and that spill reductions appeared to have improved adult passage; additional discussion is planned for Thursday’s FPOM meeting.

### *Data Review*

Chris asked for input on what TMT members see in the passage data, noting that when he looks at the JDA ladder data the reduced spill appeared to trigger a noticeable increase in fish moving through the south ladder. As well as some increased passage visible on the north shore when looking cumulatively over three days. Tony shared drone footage showing surface water response during operational changes. Ben Hausmann, BPA, added that from BPA’s perspective, the operational change did appear to produce the expected adult passage benefit. Tom agreed that the south shore showed the most dramatic response, while the north shore also improved somewhat. He emphasized that hydraulics are highly sensitive and suggested that future events might be opportunities to test intermediate options such as 60% spill to expand the TMT’s understanding.

Jay Hesse, NPT, emphasized that TMT discussion must account for both adult passage and juvenile migration impacts, noting that adult operations can affect juvenile survival and SARs. Chris acknowledged the juvenile considerations and the dynamic nature of the learning process.

### **Non-Court Ordered Operations Review**

*Storage Reservoirs* – Chris reported on Bureau of Reclamation projects:

- **HGH:** inflows continue to decline from last week’s weather event. Yesterday’s average inflows were 9.2 kcfs, average outflows of 9.5 kcfs and midnight elevation was 3,557.12 feet (almost 3 feet from full). The project filled 1.6 feet last week and will decrease outflows from 6.5 to 5 kcfs to support gradual refill, with full refill expected later in June.
- **Grand Coulee (GCL):** Inflows yesterday were 173.2 kcfs, with outflows of 116.4 kcfs, and a midnight elevation of 1,289.4 feet. The project is 10.6 feet from full and filled about 4 feet last week. GCL plans to continue refill toward 1,286 feet before the July 4 weekend, then will top off Lake Roosevelt, leaving 0.6 feet for the Lake Roosevelt Incremental Storage Program.

Alexis Mills, Corps, reported on Corps of Engineers projects:

- **Libby (LIB):** current elevation is around 2,424.7 feet, with inflows yesterday of 31 kcfs and outflows of 22.5 kcfs. Sturgeon pulse operations are ongoing, and outflows have ramped down from the maximum of 25 kcfs.
- **Albeni Falls (ALF):** elevation at Hope was 2161.4, with inflows of 57 kcfs and outflows today of 45 kcfs. Inflows on the Pend Oreille remain elevated, but forecasts show inflows receding through the week. The project is managing outflows to accommodate higher inflows and refilling to the normal summer operating band within the next couple of weeks.
- **Dworshak (DWR):** the project is full at 1,599.9 feet, with inflows of 6 kcfs and outflows of 7.5 kcfs. DWR will remain in the top half-foot until summer augmentation begins. The Corps later confirmed that Unit 1 returned to service on June 9, at 1455 hours.

*Fish* – Tom reported that yearling Chinook and steelhead are dropping off across nearly all locations, while sub-yearlings are still moving in significant numbers through the system. Sockeye are mostly below McNary (MCN), with residual numbers still at MCN and Bonneville (BON); they are expected to diminish substantially in the next 1-2 weeks.

Adult passage is transitioning from spring to summer run timing, with numbers beginning to increase at BON. FPAC's decision to seek flow augmentation is tied in part to the beginning of the sockeye run.

Dave Swank, USFWS, reported BON daytime lamprey counts at 28% of the 10-year average, while night passage increased from 26% to 40% of the total. He noted that lamprey passage remains lower than expected so far this year. Shad numbers briefly dipped for a few days but rebounded; there are plenty of shad in the river.

*Power System* – Tony reported very warm temperatures forecasted for early next week starting Sunday; BPA does not anticipate any issues meeting load demand.

### **Set Agenda for Next TMT Meeting**

The group requested the following agenda items for June 17, TMT Members may send additional items to Doug Baus or Emily Stranz. A draft agenda will be posted to the TMT website by Monday COB.

1. Treaty flow augmentation
2. Other

### **Questions or Comments from Non-TMT Members**

There were no questions or comments from non-TMT Members.

**The next scheduled TMT meeting will be on June 17 at 9AM PDT.  
*A hybrid DS Consulting Process Meeting will follow the TMT Business Meeting.***

**Columbia River Regional Forum**  
**Technical Management Team**  
**DRAFT OFFICIAL MINUTES**  
**Wednesday, June 10, 2026**

Today's TMT meeting was held via Microsoft Teams and conference call, chaired by Doug Baus, Corps, and facilitated by Nancy Pionk, DS Consulting. Minutes were collected by Andrea Ausmus, BPA (contractor, CorSource Technology Group). A list of today's attendees is available at the end of these minutes.

**1. Review Meeting Summaries & Minutes – *Emily Stranz, DS Consulting***

a) May 21, 26, 27 and June 1, 2, 3

- Many TMT members requested additional time to review.

**2. Official June Water Supply Forecast – *Chris Runyan, Reclamation, and Doug Baus, Corps***

a) Water Supply Forecasts

*Hungry Horse – Runyan*

- Basin Conditions
  - Above average precipitation, particularly at the end of May in the Flathead.
    - Received a good rainstorm after a warmup.
  - The 'January through July' numbers may seem high, but we had a wet winter, although warm. Flathead did get some runoff, reservoir-wise we are looking good in the Flathead.
- Hungry Horse (HGH)
  - June – July
    - 719 kaf
    - 79% of average
  - April – August
    - 2013 kaf
    - 98% of average
  - May – September
    - 1651 kaf
    - 93% of average
  - January – July
    - 2451 kaf
    - 110% of average

Corps Update - Baus

- The Dalles (TDA)
  - April – August
    - 78 maf
    - 88% of average
- Lower Granite (LGR)
  - April – July
    - 13 maf
    - 67% of average
- Libby (LIB)
  - June Runoff Forecast
    - 7064 kaf
    - 116% of average
- Dworshak (Clearwater Fork) (DWR)
  - April – July
    - 1814 kaf
    - 73% of average

**3. Draft Summer Spill Priority List (SPL)**

a) Spill Priority List – *Dan Turner, Corps*

- It is the time of year that we transition to summer spill. We are transitioning next week and then then following week on the Snake.
- The Spill Priority List is to manage lack of load spill on the system.
- Level 1: Water Quality Standard.
- The far-right column includes some example spill levels.
- Summer 2026 SPL is a copy and paste of the order from last year.
  - Exception of one change of the example used for the spill level at Lower Monumental (LMN). There was some misunderstanding of what that number had represented, 20 kcfs may be an easier example for people to look at.

b) FPAC Response – *Tom Lorz, Umatilla*

- Lorz said that he appreciated Turner for going through the SPL.
- FPAC looked at SPL and agreed that last year’s order seemed good to them for now.
- FPAC also appreciated the change because their confusion was on number 7 where the FOP operation is LMN bulk spill pattern at 17 kcfs. Putting 20 there made more sense.

Stranz said that there were no changes at this point, but this is a living document so if we need to bring this up again, she was happy to do that.

**4. FPAC Request for Treaty Flow Augmentation – Tom Lorz, Umatilla/FPAC Chair, and Tony Norris, BPA**

a) FPAC Request – *Lorz*

- FPAC discussed the latest ESP information yesterday and it looks like MCN was probably going to drop below 200 sometime next Tuesday.
- Fish Managers (FM) felt at this time with some other biological things happening in the System that it made sense to ask for the start of Canadian Flow Augmentation, ideally next Tuesday.
- BPA said that they start things on Saturday.
  - Lorz requested some documentation from BPA.
  - FM were trying to figure out the rules of engagement so they can make sure that their recommendations match up with BPA's timeframes. Before they had thought it was a 3 – 5-day thing but FMs are starting to understand that they have negotiations and the operations start on Saturday.
  - FMs are fine with a Saturday start, is not as ideal, they prefer next Tuesday or Wednesday.
- Requesting Flow Augmentation to start this week.

Stranz asked for clarification of when Lorz said that Saturday would be okay was that the Saturday of the following week of the Saturday in a couple of days.

Lorz said next Saturday otherwise they would make their recommendation next week.

b) BPA Response – *Norris*

- Treaty week begins on Saturday.
  - It has been that way since 1965.
  - Norris said that they coordinate operations during the week and finalize on Friday for a Saturday start.
- FMs can request it to start on Tuesday, but it would just come out as a lower flow rate spread over the week.
- For a maximum 8 kcfs to start it would start on Saturday.
  - An equivalent start mid-week would start at a lower rate starting on Saturday.
- Assuming FMs would like to start on Saturday at 8 kcfs

Lorz said that the FMs were not part of the negotiations or can see any document that really describes this process. Since BPA was making recommendations FMs were just requesting any information that BPA could share with them so that they can understand BPA's process. He said that it would help them when making these decisions or when they have to make recommendations.

Stranz said that was helpful to know that the coordination happens throughout the week, finalized on Friday and starts on Saturday. She said that it sounded like starting this

coming Saturday there would be increased flow of 8 kcfs per day. She asked if that was accurate and what Lorz was asking for.

Lorz said that it was the FMs understanding was that was the max that they could ask for in the Spring so that was what they are going to go with, unless they have more flexibility, they did not think that they did and that was the maximum they could ask for.

Norris verified, it was the maximum that they could ask for in June.

Stranz said that was the ask she asked if it sounded to Norris to be doable.

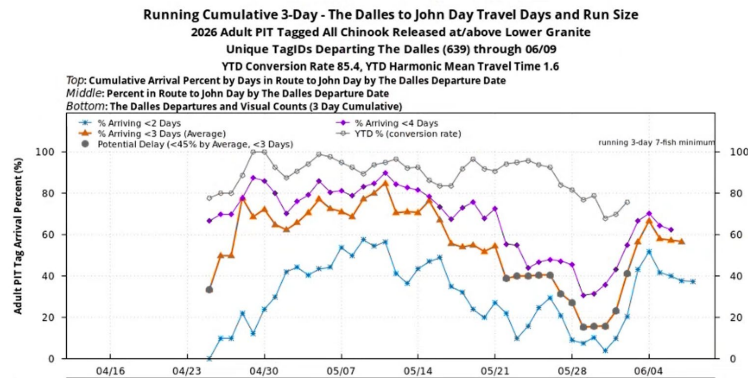
Norris said yes.

**5. Adult Passage Updates** – *Tom Lorz, Umatilla/FPAC Chair; Doug Baus, Corps; Tony Norris, BPA*

a) Fish Manager Update – *Lorz*

- Last week the Action Agencies (AA) changed the operations at John Day (JDA) on Wednesday.
  - Down to 45% spill for 8 hours.
  - There was a bump in passage.
- Due to a barge incident operation at JDA had to change.
  - JDA reduced overall flow and spill to keep the barge from sinking.
  - Maintained through Friday.
- Black dots have not been seen on either population groups for the past couple of days.
  - They have now returned to the 125% gas cap spill operation.
- Summer Operations begins midnight on June 15 and spill will be reducing.
  - FMs will track this in the meantime.
- There was an FPOM meeting on Monday, June 8, to talk about adult delays and try to get to the specifics.
  - It was a 1-hour meeting, so they only briefly touched on that.
  - There are plans to talk more on Thursday, June 11, at FPOM to try to see what kinds of tools, options, or hypotheses we can work on.

b) Reach Distribution and Delay



Stranz said that she was glad that they were all able to come together for another meeting, but one that folks wanted to have.

Baus thanked Lorz for the summary and left it open for any questions for the Corps regarding what they implemented or any questions to let him know. Otherwise, great summary.

Runyan said he wanted to summarize, so that he had it straight in his head. Last week we had three meetings, significant conversations on a potential passage delay at JDA. We looked at pictures of the spill, we looked at ladder counts for the North ladder that is near where that spill takes place, and we looked at passage in the South ladder where there could have been a potential eddy going on and we were looking at the DART plot, watching the black dots. Significant conversations on what should have been done, an action was taken to cut spill to see if that spill would potentially get fish moving that might have been below the dam, we did not know, but the black dots are there to indicate that passage from the downstream dam is not making it through the upstream dam. So that is kind of an indicator of the black dot, so, an action was taken, the black dots appeared to be going away. He said that he was wondering if we could look at the ladder split at JDA, take it back 21 days and see if we can see if there was an impact.

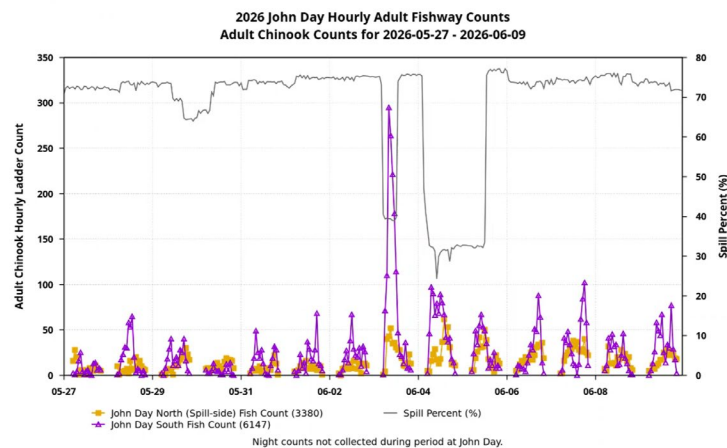


Figure: 2026 John Day Hourly Adult Fishway Counts. Adult Chinook Counts for 2026-05-27 - 2026-06-09. Night counts not collected during period at John Day.

Runyan said that he was learning here but it looked to him that when spill was reduced on June 3 to 40% as shown by the gray line, we see a fairly dramatic increase in the number of fish moving through the South ladder and then we continue that reduced spill for

another day. He said that when he looks at this data it appears that reducing that spill did trigger a group of fish that were potentially below the dam to move. He said that he wanted to throw this out there because there was tons of conversation, it was fairly heated, he believes that people are genuinely trying to do what is best for the fish but this is also adaptive and we are learning and he just felt like without at least looking at this data we are going to miss an opportunity to learn. We can use this information, and it is not a one-size-fits-all by any means but it is good information to look at, and he was glad that we can at least touch on it. Just so everyone knows there are 76 people on this call, so this is a bigger discussion than just a handful of people and we want to make sure that everyone is aware of how this operation went. He said that there were a lot of hands up, please correct him if this data was not showing what he characterized was happening and he appreciated their time.

Stranz said to clarify for the 76 people on the call that she would prioritize and turn to TMT members and any of their support folks that they might turn to. TMT would have an opportunity at the end of the meeting for all to ask questions or to add comments if folks desire. She also said to recognize that folks look at data differently and take things away so she guaranteed that there are different perspectives.

Jay Hesse, Nez Perce, said that as Lorz highlighted, there have been multiple meetings, both TMT-related and FPOM with more to come at FPOM on this topic. The environmental conditions and the operation conditions that have occurred are complex and what we are learning about fish movement and operations is positive. He said that he wanted to caution Runyan's summary of not being holistic of the breadth of the full discussions that have taken place and more to come. So, there is a lot more to this discussion than in Runyan's summary and he thought just for the nature of time he would make that point. The second point he wanted to make was one of concern and as the discussions with TMT occurred FMs raised concern or reality that these operations are trying to achieve both efficient upstream passage of adults and downstream juvenile migration that promotes the highest level of short-term survival and SARs (smolt-to-adult return ratio). So that balancing of those and remembering that the adult operations have an impact on juveniles was something that was highlighted by the FM agencies. Hesse said that when he hears a summary from the US Government that only addresses the adult portion, it makes him feel like the FM's comments about balancing the juveniles and adult aspects are not being heard and we need to figure out how we all keep all of those pieces on the table holistically in these conversations. It is highly frustrating that only the adult portion is highlighted here. He said that he appreciated that we are learning about a tool that can be used to maybe improve efficiency of adults. There are a lot of details in that we do not have time to go into. He said that he thought that was positive but as we discussed this, the impacts to the juveniles, if we are just going to do quick summaries, he would really appreciate it and ask if that could be proactively acknowledged. Hesse said that otherwise he felt like he and the other FMs were being ignored.

Stranz thanked Hesse for that transparency. She asked Runyan if he had any reflections on what he heard from Hesse.

Runyan said that Jay had all good points and that he was open to learning. He said that the downstream migrants are definitely important right now and the proportion of those that are migrating compared to the total population. He said that he did not need to get in the weeds. Runyan said it was dynamic, we are learning and let's continue learning. He

said that his ears were open, and he knew that Hesse's were open too. He said that he appreciated Hesse's comments.

c) Drone Footage Changeover from 40% Spill to Gas Cap Spill

- Norris shared a video of the drone footage with TMT.
- BPA was able to get drone footage that captured the changeover from 40% spill to Gas Cap spill, min-gen and spill the rest.
- The video showed the eddy begin to form with increased spill.

Lorz asked if BPA looked more on the North shore or the powerhouse since that is where the adult entrances are.

Norris said that you can see both entrances.

Lorz said that those are really short, he said that it would be nice to see along the whole shoreline because that was where we have had problems before.

Norris said maybe in the future if this happens again, then we can maybe get that footage. This does show the eddy that forms consistent with the modeling that occurred at Vicksburg for this project when developing spill patterns. They actively tried to find patterns that kept that eddy from forming.

Runyan asked Norris to remind him what proportion of spill it starts and ends.

Norris said that this was from 40% spill to probably like 75% spill.

Runyan asked if that fish ladder was the thing on the right where you see attractive flow coming out.

Norris said no, that is the bypass exit.

Lorz told Norris to remember that this was just the one flow, at different flows the more powerhouse you get 70% but if you are at higher flows this eddy does not occur. At lower flows, it is different. That is why they spend a lot of time on modeling, so we do not get one snapshot at one time. And that was why the FPOM group is coming together to try to figure out what tools we have to look at this and try to figure out what are the things we can do. He also cautioned that these are just surface flows we do not know what is going on at depth. What happens on the surface is not necessarily occurring at depth either, so you can still have flow going the directions you want but the surface may not show it. That is why videos like this are great, but you need to add more detail to it to get a full picture and a full understanding of what's going on. That is why we are trying to figure out what tools we do have, since unfortunately, the physical model is no longer an option to use.

Stranz asked if there was anything else that folks wanted to make sure that they share now, recognizing that there are other conversations happening, including at FPOM this week.

Lorz said that he had one more thing to add. Runyan was talking about how this change occurred and that kind of stuff, if you go back to that graph, one of the big things that we thought we were going to see was a big bump at the north shore. He said that we really did not. It looks like there are some other factors we need to work on and take a look at and to better understand that the biggest change we saw was on the South shore. He said that the other thing he would note was that since we have gone back to 125%, we have not seen the black dots, and we have kind of been seeing the same passage. So, it looks

like when these delays do occur the question is what our best tool is to deal with them and that is what we are going to be trying moving forward. Like does it need to be a significant change, or could it be a lesser change like Jonathan Ebel's idea of 60%, would that have done the same thing. We do not know and that was what we are going to be struggling with coming forward. Like when we see these delays we have to figure out if it is significant and if it is what our path is going forward and for how long and what kind of changes do we need to make. Lorz said that was what he was hoping the challenge the FPOM group could take up and give some suggestions and recommendations.

Hausmann said that he appreciated Runyan's comments, and he understood Hesse's as well. But his thought was he thought it was important for TMT as a group to be able to acknowledge that there was the anticipated benefit that occurred from the operation. He said that he did not know if it was mentioned at all at the specific JDA meeting on Monday. He said that he did not think that should be a contentious issue to be able to say this worked and move on from that. He said that his other comment was that he thought it was also important to see the video like that because when we talk about the more nuanced changes like switching unit priority from Unit 3 to Unit 4, he thought you could kind of tell from the video that was going to probably be inconsequential. It is just not enough to move the same amount of flow 50 feet to overcome an eddy like that. He said that he thought that all those factors are good for us to consider. He said that he also agreed that we have to keep in mind juveniles and believe as a USGS representative that they are doing that. And he thought when we consider whether we are going to go to 40% to 60%, there is data that exists, it shows 40% is better for juveniles than 60%. He said that he wanted folks to consider that they are not that narrow in their viewpoint of what this impact might be for both juveniles and adult and they are trying to balance that. He said that he wanted to throw that out there, that it was not a lack of consideration for that it was just trying to address the issue at hand and also keep in mind what we know as far as juvenile passage and juvenile impact.

| *Erin Cooper 9:36 AM*

| *Can I get a citation for "40% spill is better for juveniles than 60% spill"?*

| *Ben Hausmann 9:38 AM*

| *It's USGS telemetry work from early 2000's. I'll find it and share with the group*

| *Tom Lorz 9:42 AM*

| *That study was 0/60 versus 45/30 so not a surprise that the 60 was not as good. But the 12 hour 60 had better survival, but on the 24 hour time frame was not as good. So details matter. I have a hard copy of that report if needed somewhere in my office*

| *There were several studies looking at different spill levels. This was also prior to TSW so that is another factor that needs to be taken into account. Again details.*

| *Ben Hausmann 9:52 AM*

*There are several years of USGS studies with different test conditions (I worked for USGS at that time). They obviously don't align perfectly with current high spill levels but my point was just to use the data we have before implementing an operation that has some evidence of being less than ideal for juveniles.*

Stranz said she wanted to recognize, she did not know what happened at yesterday's meeting, however, when Lorz started his summary opening the conversation, he did

acknowledge that bump in adult passage with the reduction of spill. She said that she did hear that.

Hausmann said that he did hear it today, what he was saying was that he did not hear it Monday at FPOM and he thought it was important because that was specific to this topic.

Hesse said that it was discussed at FPOM, we started off with black dots. It was not a concise statement, but they started off with a description of where we were at so that was a different meeting and we are continuing the discussions, but it was not totally absent.

Stranz said that she did not want to relive yesterday's FPOM today. They all get to continue their FPOM conversation tomorrow. So, note and move forward with that tomorrow.

Peery said that he wanted to point out to Lorz about the count on the North shore. He said obviously the more dramatic change was on the first day at the South shore counts and that kind of continued with passage on the second day when you look at the cumulative counts over the three days, but the change in the North shore counts were almost actually proportionally as large as on the South shore count side which was a surprise to him and one of the things that NOAA was looking at when recommending this change. He said that he thought there actually was a benefit to the North shore; it just was not as dramatic as on the South shore, but it was there.

Lorz said that Peery was correct that there was a bump in the North shore, he was downplaying that. He was just saying that the most significant change occurred in the South shore, as we can see, it was like a fivefold increase, whereas the North shore was a smaller one. And when you get a bunch of fish moving you would expect that. He said that he thought that we are starting to see the North shore starting to get closer to more balanced but this year the North shore has been poor the whole year and fewer than it has historically. He said that one thing he wanted to caution people, like Hausmann, Lorz said that he knew that Hausmann was making a comment that he thought that using Unit 3 had very little impact and stuff but at Little Goose, we have crazy hydraulics there and how important Unit 1 and Unit 2 are at Little Goose becomes very evident. It does not look like much but it does make a big impact and that is why these models are very sensitive, hydraulics in the river are very sensitive, and that was why we take and spend weeks down at ERDC to come up with patterns and look at things and try to figure out how important things are. That is why when we have opportunities like this it would be great if we could take opportunities instead of going straight to 40% if we had gone to 60% and see if we see a similar level of benefits and that gives us more information and helps with us trying to figure out long term what our plans going forward are. He said that they were hoping that they would have some of that flexibility. Hopefully we will not have any problems again in the future, but if we do, maybe we do have some more flexibility to look at other options, so we can expand our knowledge.

## 6. Non-Court Ordered Operations Review

### a) Storage Reservoirs

#### Reclamation – Chris Runyan

- Hungry Horse Dam
  - Conditions:
    - Inflows continue to come down from a week ago as a large inflow event yesterday.
    - Continue to pick up some rain and build snow in high elevations, nothing dramatic but unsettled weather.
  - Average 6/9 Inflows: 9.2 kcfs
  - Average 6/9 Outflows: 6.5 kcfs
  - Midnight Elevation: 3557.12 feet
    - From Full: ~3 feet
    - Filled last week: ~1.6 feet
  - Operations:
    - Decreasing outflows today from 6.5 kcfs to 5 kcfs to keep the reservoir slowly filling as we go into a cooler condition.
    - Everything looks good at HGH to reach full later in June.
    - Summer flow: ~3.2 kcfs
    - End of September: 3544.1 feet

Brian Marotz, MT, said that this was a great feathering of refill, good work on that.

Runyan thanked Marotz and shared that they are looking at ~3.2 kcfs for the Summer flow and they are trying to taper into that as well. They have the end of September of 3544.1 feet.

- Grand Coulee Dam
  - Inflows (6/9): 173.2 kcfs
  - Outflows (6/9): 116.4 kcfs
  - Midnight Elevation: 1279.4 feet
    - From Full: 10.6 feet
    - Filled last week: ~4 feet
  - Operation:
    - Longer term (between now and July 2) GCL will continue to fill as best possible with flows in the lower river.
    - Spring Refill: 1286 feet (July 2)
    - Refill after July 4: 1289.4 feet

- The 0.6 feet below fill accounts for the Lake Roosevelt Incremental Storage Program.

Corps – Alexis Mills

- Libby Dam (Lake Koocanusa)
  - Midnight Elevation: 2424.7 feet
  - Avg. 1-Day Inflows: 31 kcfs
  - Current Outflow: 22.5 kcfs
  - Operations:
    - Sturgeon Pulse operations are ongoing.
    - Outflows have ramped down from a maximum of 25 kcfs.
- Albeni Falls
  - Midnight Elevation (Hope Gauge): 2061.4 feet
  - Avg. 1-Day Inflows: 57 kcfs
  - Current Outflow: 45 kcfs
  - Conditions:
    - Inflows on Pend Orielle remain elevated but the forecast is to continue to see inflows recede throughout the week.
  - Operations:
    - Managing outflows to accommodate inflows
    - Refilling to the normal Summer band.
- Dworshak Dam
  - Midnight Elevation: 1599.9 feet (Full)
  - Avg. 1-Day Inflows: 6 kcfs
  - Current Outflow: 7.5 kcfs
  - Operations:
    - Project will remain in top half of foot until the start of Summer Flow Augmentation.

Hesse asked if Unit 1 was still out of service at DWR and if so did we have a return to service date.

Peery said that they had got notice yesterday that Unit 1 was returned to service on June 9 at 1455.

b) Fish

Salmon – Tom Lorz, Umatilla

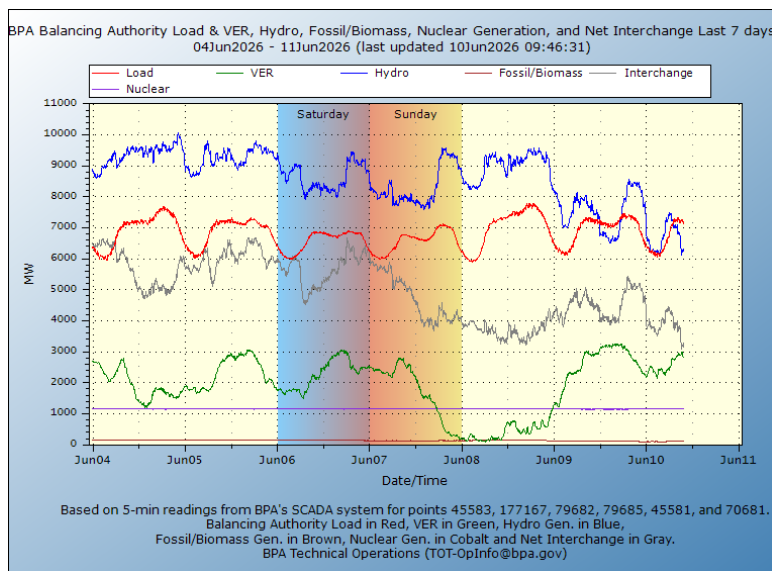
- Juveniles
  - Yearling Chinook and Steelhead are dropping off at all locations, as expected, it is toward the end of the run.

- Subyearling are still having significant numbers moving through the System with peaks at Lower Granite.
- Sockeye have mostly moved below McNary. There are still some numbers at McNary, but they are dropping off and there is still a number at Bonneville, but they are working their way through the System and are expected to move out quickly. In another week or two we will likely be at no number of Sockeye.
- Adult Salmon Counts
  - Transitioning from Spring Adult Chinook to the Summer run, numbers are starting to pick up at Bonneville.
  - Sockeye are just starting at Bonneville. This is part of the reason why FMs thought they should start making use of some of the Treaty Flow Augmentation water. Numbers are low at Bonneville, but historically those numbers will take off quickly, probably in the next week or two.
  - There are plenty of Shad around.

Lamprey – Dave Swank, USFWS

- Adult Lamprey
  - BON Daytime Window Counts: 28% of Ten-Year Average
  - The proportion of Lamprey passing at night has increased from 26% to 40%.
  - As usual Lamprey are behaving differently than Salmon and Steelhead, they tend to pass at night much more.
  - It appears to be a low count this year so far.
- Shad
  - There was an interesting drop in Shad numbers for a few days but they picked up a yesterday a little bit, so there are still plenty of Shad in the river.

c) Power System – Tony Norris, BPA



- Early next week, possibly on Sunday, pretty warm temperatures are coming in.
- Right now, BPA is not seeing issues with serving load at this point.

**7. Public Questions/Comments**

**8. Agenda Items**

Next Meeting Scheduled: **Wednesday, June 17, 2026**

Meeting Location: Microsoft Teams

*Next Week's Agenda Topics*

*Future Agenda Topics*

- Treaty Flow Augmentation (June 24)
- Adult Passage Assessment of LMN and JDA
- DART Presentation

**Today’s Attendees:**

<b>Agency</b>	<b>TMT Representative(s)</b>
NOAA Fisheries (NMFS)	
Oregon	Erick Van Dyke
Washington	Charles Morrill
Kootenai Tribe	
Confederated Tribes of Colville Reservation	
Umatilla Tribe (CRITFC)	Tom Lorz, Pete McHugh
Yakama Nation	Keely Murdoch
Bureau of Reclamation (BOR)	Chris Runyan, Eric Rothwell
Army Corps of Engineers (COE)	Doug Baus (Chair), Aaron Marshall, Lisa Wright
US Fish & Wildlife Service	Dave Swank
Idaho	
Montana	Brian Marotz
Spokane Tribe (STOI)	Brent Nichols
Nez Perce Tribe (NPT)	Jay Hesse
Warm Springs Tribe	
Confederated Salish and Kootenai Tribes	
Bonneville Power Administration (BPA)	Tony Norris, Ben Hausmann

Other Attendees (non-TMT members):

COE – Tiffany Dixon, Tom Conning, Chris Peery, Jessika Solleder, Dan Turner, Alexis Mills, Eric Chow, Megan Biljan, Leah Hamilton, Michelle Yuen, Patricia Madson, Catherine Dudgeon, Robert Eskildsen

BOR – Ryan Fosness

BPA – Tammy Mackey, Chelsea Smith-Nelson, James, Eric Nielsen,

DS Consulting – Nancy Pionk (Facilitator), Colby Mills,

CorSource – Andrea Ausmus (BPA note taker, Contractor)

Oregon DEQ – David Gruen

Washington Ecology – Thomas Starkey

Columbia Basin Bulletin – Mike O’Bryant

AVA – Mike Dillon, Steve Lentini, Patrick Maher

NPCC – Kate Self, Stacy Horton, Rudy Salakory,

GCPUD – Shaun Harrington, Joseph Akers, Eva Stites

Energy EPS – Joshua Rasmussen

FPC – Noah Campbell, Erin Cooper, Gabe Scheer

Unaffiliated – Mike Buchko