

The Official Water Supply Forecasts for January through July are computed on the 3rd workday of the month. Flood Risk Management (FRM) is computed at standard intervals and posted at: <https://www.nwd.usace.army.mil/CRWM/Forecasts/>

The **JANUARY** Water Supply Forecast sets BiOp actions as highlighted in the table below:

Forecast Point	Forecast period	Forecast	BiOp Actions to be Determined
Hungry Horse	April – August Provided by Reclamation	January, February, March	Sets min. flows at Hungry Horse and Columbia Falls
	May – September Provided by Reclamation	January, February, March	Sets VARQ FRM targets
		April	Sets VARQ FRM targets and VARQ refill flows
		May	Sets VARQ refill flows Sets end of September draft target
		June	Sets VARQ refill flows
The Dalles	April – September Provided by NWRFC	March	Sets Columbia River Water Management Program (CRWMP) adjustments at Grand Coulee
	April – August Provided by NWRFC	April	Sets spring flow objective at McNary Dam
		July	Sets end of August draft limit at Grand Coulee
Lower Granite	April – July Provided by NWRFC	April	Sets spring flow objective at Lower Granite
		June	Sets summer flow objective at Lower Granite
Libby	April – August Provided by Corps Seattle District	December	Sets end of December FRM draft requirement
		January, February, March	Sets VARQ FRM requirement
		April	Sets VARQ FRM requirement and VARQ refill flows
		May	Sets Libby min. sturgeon flow volume and min. bull trout flows for after sturgeon pulse through Sep Sets VARQ FRM targets and VARQ refill flows Sets end of September draft target
		June	VARQ refill flows
Dworshak	April – July Provided by NWRFC	January to March	Manage for reservoir FRM, VDL, and Flood Control Refill Curve (FCRC)
		April to June	Manage for reservoir FRM and FCRC

Source: 2026 Water Management Plan, page 15 - <https://public.crohms.org/tmt/documents/wmp/2026/>

6-January-2026

## **Hungry Horse Dam – Official Water Supply Forecast JANUARY 2026**

Below are the volumes for the January 2026 final forecast for Hungry Horse:

- Jan-Jul: 2,490 kaf (111%)
- Apr-Aug: 2,167 kaf (106%)
- May-Jul: 1,741 kaf (105%)
- May-Sep: 1,867 kaf (105%)

The minimum flows downstream of Hungry Horse based on the Apr-Aug Volume forecast are as follows:

- Columbia Falls: 3,500 cfs
- Hungry Horse: 900 cfs

**Chris Runyan**

U.S. Bureau of Reclamation | Columbia-Pacific Northwest Interior - Region 9  
Water Management | Operations Group  
Boise, ID 83706



# Northwest River Forecast Center Water Supply Forecasts

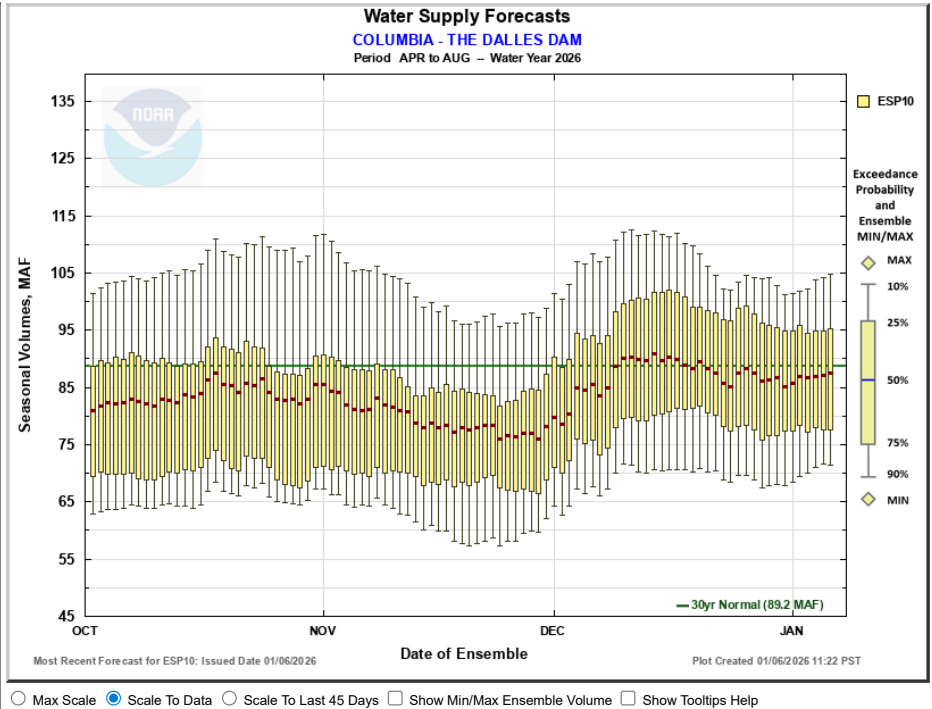
- Home
- Data/Normals
- Rankings
- ENSO / Runoff
- Adjustments
- Verification
- Verify All Years
- Archive
- Monthly Water Supply Forecasts
- Help

Choose Date: 01/06/2026 Archive: Water Year

**Please join us during our upcoming NWRFC Water Supply webinar for a discussion of current forecast conditions.**  
 (Posted: Monday, December 29, 2025 to Thursday, January 8, 2026)  
**Thursday, January 8th, 2026 10:00 am Pacific**  
 Registration: [Click Here](#). We look forward to your attendance!

COLUMBIA - THE DALLES DAM (TDAO3) Forecasts for Water Year 2026					
Official Water Supply					
ESP with 10 Days QPF Ensemble: 2026-01-06 Issued: 2026-01-06					
Forecast Period	Forecasts Are in KAF				30 Year Average (1991-2020)
	90 %	50 %	% Average	10 %	
APR-SEP	76884	93755	100	111876	94166
APR-JUL	65400	79084	97	96001	81933
APR-AUG	71862	88029	99	105351	89196
JAN-SEP	100851	118843	102	138572	115946
JAN-JUL	88720	103499	100	123098	103714
OCT-SEP	120275	138717	105	158446	132314
Experimental Water Supply					
HEFS with 15 days EQPF Ensemble: 2026-01-06 Issued: 2026-01-06					
APR-SEP	76683	95101	101	112513	94166
APR-JUL	64562	80159	98	96648	81933
APR-AUG	71349	88922	100	105970	89196
JAN-SEP	100003	119135	103	140672	115946
JAN-JUL	88122	104434	101	123970	103714
OCT-SEP	119876	139009	105	160546	132314
Reference					
ESP with 0 Days QPF Ensemble: 2026-01-06 Issued: 2026-01-06					
APR-SEP	77236	96367	102	113764	94166
APR-JUL	64494	81980	100	100115	81933
APR-AUG	71760	90871	102	107894	89196
JAN-SEP	100420	121544	105	143261	115946
JAN-JUL	88325	106870	103	127774	103714
OCT-SEP	120293	141418	107	163134	132314

Move the mouse over the desired "Forecast Period" to display a graph.



Most Recent Forecast for ESP10: Issued Date 01/06/2026 Plot Created 01/06/2026 11:22 PST

Max Scale
  Scale To Data
  Scale To Last 45 Days
  Show Min/Max Ensemble Volume
  Show Tooltips Help

**Overlay**

ESP10 HEFS ESP0

**Data Files**

CSV (ESP10 / APR-AUG)

Forecast Ensemble



Commerce Home | NOAA | NWS Organization | NWRFC Site Map | Search

Freedom of Information Act | Privacy Policy | Information Quality | USA.gov | Career Opportunities



# Northwest River Forecast Center Water Supply Forecasts

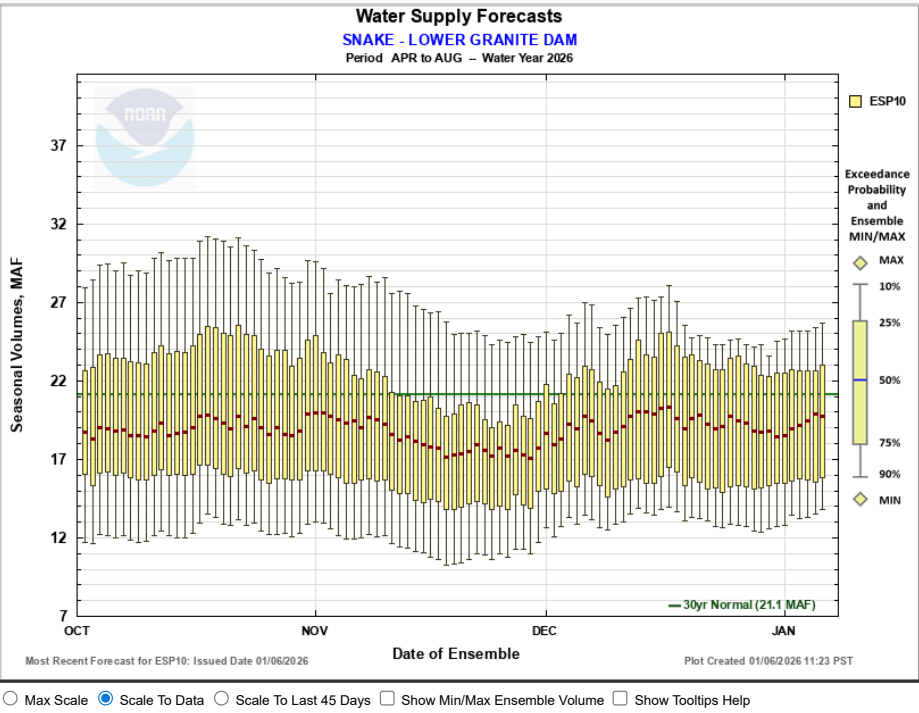
- Home
- Data/Normals
- Rankings
- ENSO / Runoff
- Adjustments
- Verification
- Verify All Years
- Archive
- Monthly Water Supply Forecasts
- Help

Choose Date: 01/06/2026 Archive: Water Year

**Please join us during our upcoming NWRFC Water Supply webinar for a discussion of current forecast conditions.**  
 (Posted: Monday, December 29, 2025 to Thursday, January 8, 2026)  
**Thursday, January 8th, 2026 10:00 am Pacific**  
 Registration: [Click Here](#). We look forward to your attendance!

SNAKE - LOWER GRANITE DAM (LGDW1) Forecasts for Water Year 2026					
Official Water Supply					
ESP with 10 Days QPF Ensemble: 2026-01-06 Issued: 2026-01-06					
Forecast Period	Forecasts Are in KAF				30 Year Average (1991-2020)
	90 %	50 %	% Average	10 %	
APR-SEP	14884	21003	94	27082	22232
APR-JUL	12785	18513	93	24208	19946
APR-AUG	13838	19783	94	25726	21121
JAN-SEP	22225	28764	97	37722	29736
JAN-JUL	20201	26209	95	34558	27450
OCT-SEP	27462	34001	99	42959	34287
Experimental Water Supply					
HEFS with 15 days EQPF Ensemble: 2026-01-06 Issued: 2026-01-06					
APR-SEP	14748	21075	95	26230	22232
APR-JUL	12637	18574	93	23491	19946
APR-AUG	13696	19838	94	24889	21121
JAN-SEP	21682	29035	98	36521	29736
JAN-JUL	19682	26534	97	33689	27450
OCT-SEP	26918	34271	100	41757	34287
Reference					
ESP with 0 Days QPF Ensemble: 2026-01-06 Issued: 2026-01-06					
APR-SEP	15039	21886	98	27300	22232
APR-JUL	12914	19463	98	24558	19946
APR-AUG	13988	20686	98	25956	21121
JAN-SEP	21879	29821	100	37705	29736
JAN-JUL	19859	27221	99	34711	27450
OCT-SEP	27116	35058	102	42941	34287

Move the mouse over the desired "Forecast Period" to display a graph.



**Overlay**

ESP10 HEFS ESP0

**Data Files**

CSV (ESP10 / APR-JUL)

Forecast Ensemble



Commerce Home | NOAA | NWS Organization | NWRFC Site Map | Search

Freedom of Information Act | Privacy Policy | Information Quality | USA.gov | Career Opportunities

Libby : January Runoff Forecast & Flood Risk Management Calculation

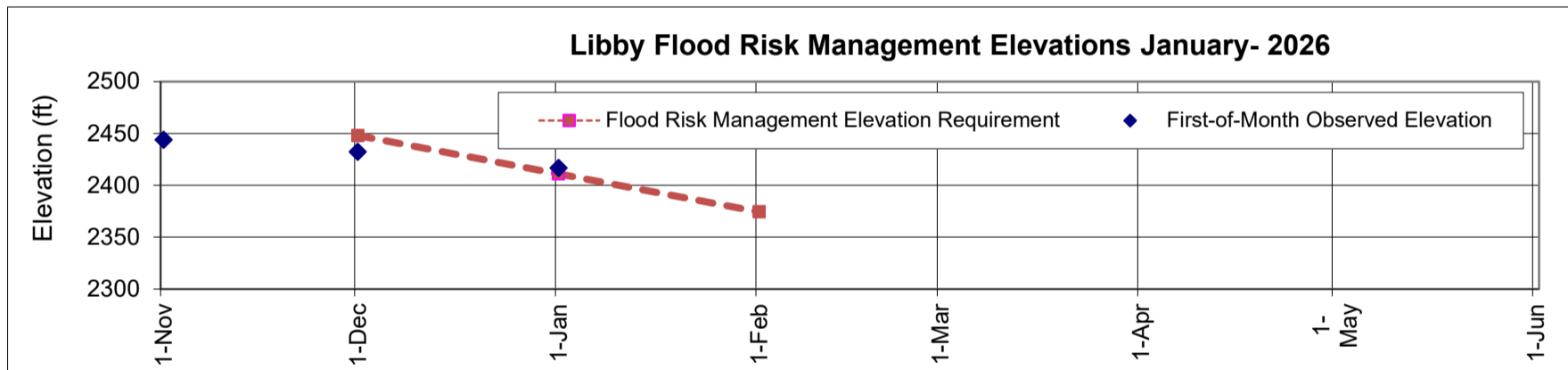
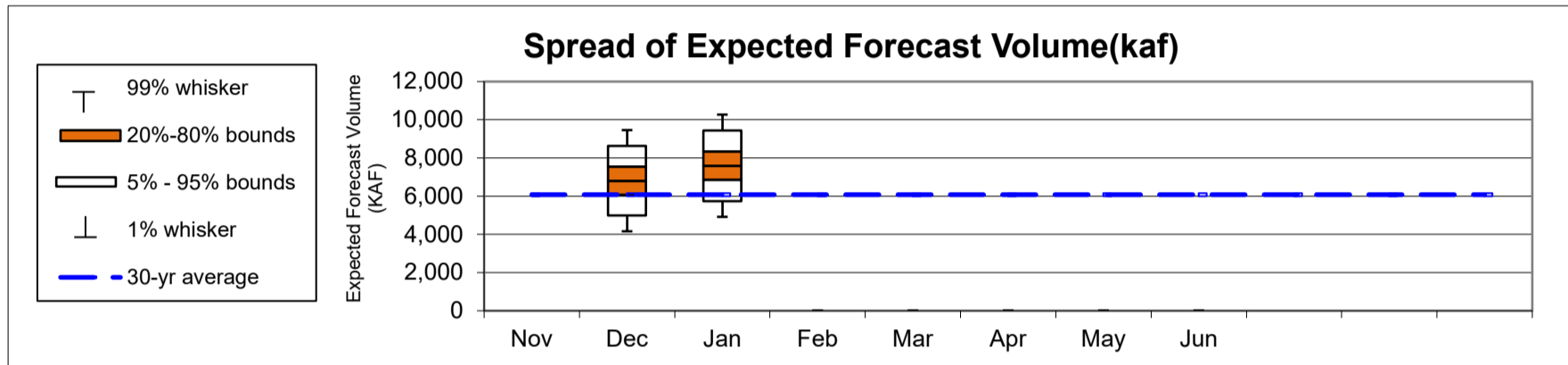
WY 2026

Runoff Forecast	January	1991-2020 Average	1991 - 2020 Percent of Average	1929-2020 Average	1929 - 2020 Percent of Average
Most Probable Runoff Volume: Apr-Aug (kaf)	7595	6080	125%	6259	121%
Most Probable Runoff Volume: Apr-Jul (kaf)	6958	5570	125%	5708	122%
Most Probable Runoff Volume: May-Jul (kaf)	6263	5014	125%	5183	121%

Flood Risk Management	January
31-Jan Flood Risk Management Space (kaf)	3138
31-Jan Flood Risk Management Elevation (ft)	2374.4

Forecast/Reservoir Data	Nov	Dec	Jan	Feb	Mar	Apr	May	Jun
Apr-Aug Runoff Forecast (kaf)		6811	7595					
First-of-Month Elev (ft)	2444.1	2432.3	2416.7					

Seasonal FRM Requirements	30-Nov	31-Dec	31-Jan	28-Feb	31-Mar	30-Apr		
Flood Risk Management Space (kaf)	500	2000	3138					
Flood Risk Management Elevation (ft)	2448.0	2411.0	2374.4					



Notes:

1. The given forecast is the official Corps of Engineers forecast for Libby. If you have any questions please contact Leon Basdekas (208) 353-2564, Jason Chang (206) 764-3528, Lumas Helaire (206) 316-3875, Ethan Cheng (206) 572-2798, Piper Klinger (206) 764-6843, or David Doll (206) 316-3003.
2. If a prior month's forecast as published in this document is different than what was originally published in the issue month, then the earlier forecast has been adjusted to reflect updated values for precipitation or streamflow.
3. This forecast serves as an update to the forecast previously issued on January 7th. Please disregard any previous versions of this forecast.

**Libby : January Runoff Forecast & Flood Risk Management Calculation**  
**Apr-Aug Runoff Forecast Calculation:**

<i>Variable</i>	<i>Month(s)</i>	<i>Units</i>	<i>Observed Value A</i>	<i>Percent of Average (1991-2020)</i>	<i>Regression Coefficient B</i>	<i>Marginal Runoff (KAF) =A*B</i>
SOI	∑Jun:Jul		0.90		95.28	85.8
Eureka RS, MT	∑Oct:Dec Prcp	inches	5.77	156%	141.74	817.8
West Glacier, MT	∑Oct:Dec Prcp	inches	14.30	151%	58.42	835.4
Cranbrook A, BC	∑Oct:Dec Prcp	millimeters	112.70	116%	4.58	516.2
Fernie, BC	∑Oct:Dec Prcp	millimeters	524.42	138%	1.20	629.3
Hawkins Lake, MT	1-Jan SWE	inches				
Stahl Peak, MT	1-Jan SWE	inches	20.90	124%	34.63	723.8
East Creek, BC	1-Jan SWE	millimeters				
Moyie Mountain, BC	1-Jan SWE	millimeters	207.50	115%	1.59	328.9
Sunshine Village, AB	1-Jan SWE	millimeters	436.00	161%	2.14	933.0
Akamina Pass, AB	1-Jan SWE	millimeters				
South Racehorse Creek, AB	1-Jan SWE	millimeters				
Intercept			1		2724.44	2724.4
January Forecast	April - August	kaf				7594.6

**Data used in Libby Water Supply Forecast**

<i>Climate Data</i>	<i>Jun-25</i>	<i>Jul-25</i>
SOI	0.30	0.60

<i>Precipitation Data</i>	<i>Oct</i>	<i>Nov</i>	<i>Dec</i>	<i>Jan</i>	<i>Feb</i>	<i>Mar</i>	<i>Apr</i>	<i>May</i>
Eureka RS, MT (inch)	1.18	2.08	2.51					
West Glacier, MT (inch)	3.50	5.68	5.12					
Cranbrook A, BC (mm)	19.40	36.20	57.10					
Fernie, BC (mm)	113.03	221.74	189.65					

<i>Snow Water Equiv</i>	<i>Nov</i>	<i>Dec</i>	<i>Jan</i>	<i>Feb</i>	<i>Mar</i>	<i>Apr</i>	<i>May</i>	<i>Jun</i>
Hawkins Lake, MT (inch)								
Stahl Peak, MT (inch)			21					
East Creek, BC (mm)								
Moyie Mountain, BC (mm)			208					
Sunshine Village, AB (mm)			436					
Akamina Pass, AB (mm)								
South Racehorse Creek, AB (mm)								

<i>Streamflow</i>	<i>Nov</i>	<i>Dec</i>	<i>Jan</i>	<i>Feb</i>	<i>Mar</i>	<i>Apr</i>	<i>May</i>	<i>Jun</i>
Libby Inflow Volume (kaf)								

<i>Reservoir Elevation</i>	<i>Nov</i>	<i>Dec</i>	<i>Jan</i>	<i>Feb</i>	<i>Mar</i>	<i>Apr</i>	<i>May</i>	<i>Jun</i>
Libby FOM Elev (feet)	2444.1	2432.3	2416.7					

Michelle Yuen, P.E., signing on behalf of  
 William D. Proctor, P.E.  
 Approving Official  
 Ch., Hydrologic Engineering and Power Branch  
 Northwestern Division

David Varner, P.E., signing on behalf of  
 Leon Basdekas, P.E.  
 Upper Columbia Senior Water Manager  
 Seattle District



# Northwest River Forecast Center Water Supply Forecasts

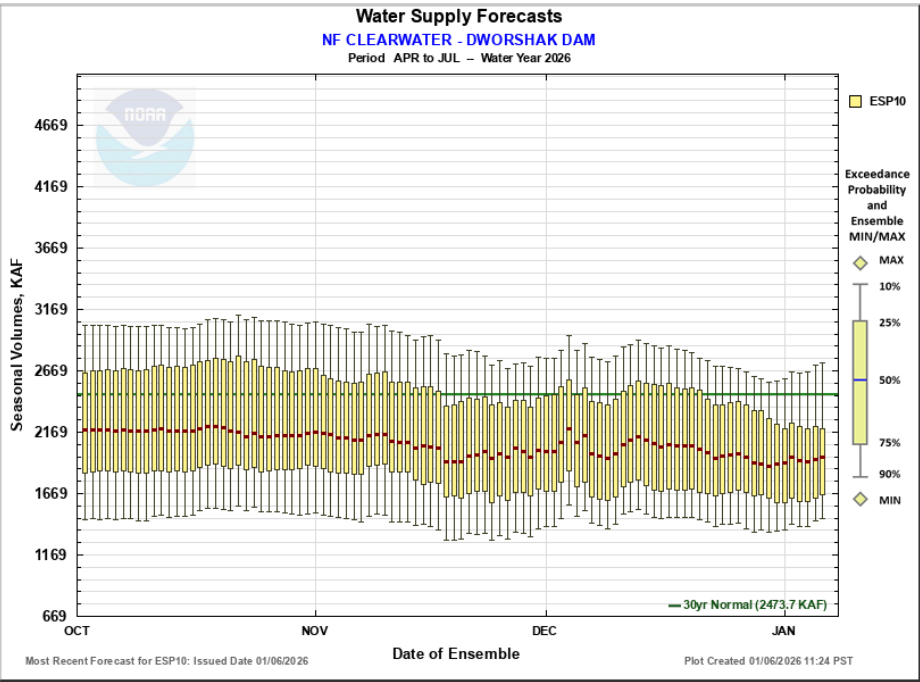
- Home
- Data/Normals
- Rankings
- ENSO / Runoff
- Adjustments
- Verification
- Verify All Years
- Archive
- Monthly Water Supply Forecasts
- Help

Choose Date: 01/06/2026 Archive: Water Year

**Please join us during our upcoming NWRFC Water Supply webinar for a discussion of current forecast conditions.**  
 (Posted: Monday, December 29, 2025 to Thursday, January 8, 2026)  
**Thursday, January 8th, 2026 10:00 am Pacific**  
 Registration: [Click Here](#). We look forward to your attendance!

NF CLEARWATER - DWORSHAK DAM (DWR11) Forecasts for Water Year 2026					
Official Water Supply					
ESP with 10 Days QPF Ensemble: 2026-01-06 Issued: 2026-01-06					
Forecast Period	Forecasts Are in KAF				30 Year Average (1991-2020)
	90 %	50 %	% Average	10 %	
APR-SEP	1573	2097	80	2879	2620
APR-JUL	1469	1968	80	2735	2474
JAN-SEP	2695	3214	91	4368	3543
JAN-JUL	2593	3091	91	4236	3397
OCT-SEP	3580	4099	103	5253	3998
Experimental Water Supply					
HEFS with 15 days EQPF Ensemble: 2026-01-06 Issued: 2026-01-06					
APR-SEP	1511	2100	80	2812	2620
APR-JUL	1409	1970	80	2672	2474
JAN-SEP	2631	3238	91	4411	3543
JAN-JUL	2491	3111	92	4258	3397
OCT-SEP	3516	4123	103	5296	3998
Reference					
ESP with 0 Days QPF Ensemble: 2026-01-06 Issued: 2026-01-06					
APR-SEP	1539	2143	82	2847	2620
APR-JUL	1436	2014	81	2710	2474
JAN-SEP	2593	3333	94	4436	3543
JAN-JUL	2465	3204	94	4285	3397
OCT-SEP	3479	4219	106	5321	3998

Move the mouse over the desired "Forecast Period" to display a graph.



Max Scale 
  Scale To Data 
  Scale To Last 45 Days 
  Show Min/Max Ensemble Volume 
  Show Tooltips Help

**Overlay**

ESP10  HEFS  ESP0

**Data Files**

CSV (ESP10 / APR-JUL)

Forecast Ensemble



[Commerce Home](#) | 
 [NOAA](#) | 
 [NWS Organization](#) | 
 [NWRFC Site Map](#) | 
 [Search](#)

[Freedom of Information Act](#) | 
 [Privacy Policy](#) | 
 [Information Quality](#) | 
 [USA.gov](#) | 
 [Career Opportunities](#)