

# 2026 Water Management Plan

## Seasonal Update

### April 6, 2026

## 1. Introduction

The Seasonal Update is intended to supplement the annual Water Management Plan (WMP) with more detailed information on operations as the water year progresses. Each section of the Seasonal Update will be updated when information is available and finalized when no further information is available.

The first update for the primary elements of Fall and Winter will be posted by November 1 of each year. The first update for the primary elements of Spring and Summer will be posted by March 1 of each year. Subsequent updates will be posted throughout the water year as new information becomes available. The elements and operations described in the Seasonal Update and the approximate schedule for updates and finalization are as displayed in Table 1.

**Table 1. Schedule for update and finalization of Seasonal Update elements and operations**

Section	Element	Begins	Finalized	Last Updated
2.1	Current Conditions (e.g., WSF, Streamflows)	October	July	March 2026
2.2	Seasonal Flow Objectives	April	August	-
2.3	Flood Risk Management	January	June	April 6, 2026
2.4	Storage Project Operations	September	September	April 6, 2026
2.5	Water Quality (Spill Priority Lists)	January	December	-
	<b>Specific Operations</b>	<b>Start Date</b>	<b>End Date</b>	<b>Last Updated</b>
2.6	Burbot spawning temperature management (Libby Dam)	November	March	-
2.7	Lake Pend Oreille Kokanee (Albeni Falls Dam)	September 1	December 30	April 6, 2026
2.8	Upper Snake Flow Augmentation	April 1	August 31	-
2.9	Chum Flows (Bonneville Dam)	November 1	April 10	April 6, 2026
2.10	Hanford Reach Fall Chinook Protection	November	June	April 6, 2026
2.11	Snake River Zero Generation	December	February	March 2026

## 2. Seasonal Update Elements and Specific Operations

### 2.1. Current Conditions

#### Water Supply Forecasts – NWRFC

The final water supply forecast (WSF) is defined as the forecast posted on NOAA’s Northwest River Forecast Center (NWRFC) website at 5:00 pm Pacific Standard Time on the 3rd business day of the month. NWRFC water supply forecasts are available on the following website.

<http://www.nwrfc.noaa.gov/ws/>

**Table 2. The Dalles Dam Final Water Supply Forecasts.**

Forecast Issue Date	January-July 2026		April-August 2026	
	Volume (MAF)	% of 30-year (1991-2020) Average (103.7 MAF)	Volume (MAF)	% of 30-year (1991-2020) Average (89.2 MAF)
January 6, 2026	103.5	100%	88.0	99%
February 4, 2026	96.2	93%	82.6	93%
March 4, 2026	98.2	85%	84.3	94%
April 3, 2026	101.4	94%	83.9	94%
May 5, 2026				
June 3, 2026				
July 6, 2026				

**Table 3. Grand Coulee Dam Final Water Supply Forecasts.**

Forecast Issue Date	January-July 2026		April-August 2026	
	Volume (MAF)	% of 30-year Average (61.7 MAF)	Volume (MAF)	% of 30-year Average (58.2 MAF)
January 6, 2026	64.5	105%	60.7	101%
February 4, 2026	62.9	102%	58.1	100%
March 4, 2026	65.7	106%	61.0	105%
April 3, 2026	67.7	110%	60.9	105%
May 5, 2026				
June 3, 2026				
July 6, 2026				

**Table 4. Lower Granite Dam Final Water Supply Forecasts.**

Forecast Issue Date	April-July 2026		April-August 2026	
	Volume (MAF)	% of 30-year Average (1991-2020) (27.4 MAF)	Volume (MAF)	% of 30-year Average (1991-2020) 21.1 MAF)
January 6, 2026	18.5	93%	19.8	94%
February 4, 2026	14.9	75%	16.1	76%
March 4, 2026	15.2	76%	16.3	77%
April 3, 2026	14.3	71%	15.4	73%
May 5, 2026				
June 3, 2026				
July 6, 2026				

**Table 5. Dworshak Dam Final Water Supply Forecasts.**

Forecast Issue Date	April-July 2026	
	Volume (KAF)	% of 30-year (1991-2020) Average (2,474 KAF)
December 3, 2025	2087	84%
January 6, 2026	1968	80%
February 4, 2026	1752	71%
March 4, 2026	2002	81%

April 3, 2026	2009	81%
May 5, 2026		
June 3, 2026		

### Water Supply Forecasts - Corps

The Corps' Seattle District produce the following volume inflow forecast for Libby and they are available on the following website.

<https://www.nwd.usace.army.mil/CRWM/Forecasts/>

**Table 6. Libby Dam Water Final Supply Forecasts.**

Forecast Issue Date	April-August 2026	
	Volume (KAF)	% of 78-year (1991-2020) Average (6,080 KAF)
December	6811	109%
January	7595	121%
February	6831	109%
March	6738	108%
April	7117	114%
May		
June		

### Water Supply Forecasts – Reclamation

Water supply forecasts for Hungry Horse Dam are produced by Reclamation.

**Table 7. Hungry Horse Dam Final Water Supply Forecasts.**

Forecast Issue Date	April-August 2026		Date-July 2026		May-September 2026	
	Volume (KAF)	% of 30-year Average (2,047 KAF)	Volume (KAF)	% of Average	Volume (KAF)	% of 30-year Average (1,782 KAF)
January	2167	106%	2490	111%	1867	105%
February	1861	91%	2060	95%	1562	88%
March	1805	88%	1900	91%	1505	84%
April	1898	93%	1837	93%	1539	86%
May						
June						

### Weekly Weather and Precipitation Retrospectives

Week	Weekly Weather / Precipitation Retrospective
October 1, 2025	<p>Temperatures: Across the load centers, temperatures hovered around average across the week</p> <p>Precipitation: Widespread rain across the basin is expected throughout the week with the heaviest precipitation concentrated across ID.</p> <p>Streamflow: We saw some responses to the precipitation, mostly in the Salmon and Clearwater basins.</p>

Week	Weekly Weather / Precipitation Retrospective
October 6, 2025	<p>Temperatures: A ridge of high pressure brought warmer than normal temperatures across the region, but fell below normal over the weekend</p> <p>Precipitation: A low-pressure system brought rain and high elevation snow over much of the basin over the weekend.</p> <p>Streamflow: We saw responses from the weekend rain over much of the basin, with slight increases in the Upper Columbia, Clark Fork, Pend Oreille and Clearwater.</p>
October 13, 2025	<p>Temperatures: Fall is upon us and temperatures were below normal across the load centers.</p> <p>Precipitation: Started the week with precipitation over much of the basin with additional precip falling over southern ID and western MT</p> <p>Streamflow: Fairly flat with some responses in the Kootenay, Flathead and Pend Oreille</p>
October 20, 2025	<p>Temperatures: A high pressure system moving over the region brought above average temperatures and mostly to partly sunny weather for much of the week. A cold front moved through Friday dropping temperatures below normal for the weekend.</p> <p>Precipitation: Fairly dry most of the week, but rain and mountain snow fell this past weekend.</p> <p>Streamflow: Mostly flat, but started to see slight rises across the basin.</p>
October 27, 2025	<p>Temperatures: Across the load centers, temperatures started off cool, but increased to average for most of the week.</p> <p>Precipitation: We had a rollercoaster pattern of dry/wet days this week. Tuesday and Thursday were the driest day before a low pressure system brought widespread rain and mountain snow over the PNW.</p> <p>Streamflow: Fairly flat</p>
November 3, 2025	<p>Temperatures: Temps were up-and-down across the week with several frontal systems but were generally above average regionwide.</p> <p>Precipitation: Above average, especially in the northern half of the basin.</p> <p>Streamflow: Some rises early in the week around most basins, especially in the Upper Columbia, Upper Tribs, and Kootenay basins</p>
November 10, 2025	<p>Temperatures: Above average.</p> <p>Precipitation: Rose to above average in the northern half of the Basin but remained below average south.</p> <p>Streamflow: Rises, mostly minor, were observed late in the week across most basins.</p>
November 17, 2025	<p>Temperatures: Slightly above average.</p> <p>Precipitation: Below average, but not completely dry.</p> <p>Streamflow: Flows receded with the below average precipitation. A few minor rises were observed over the weekend, mainly in the Upper Columbia, Spokane, and Clearwater basins</p>
November 24, 2025	<p>Temperatures: Rose to above average.</p> <p>Precipitation: Initially wetter than average in the northern half of the basin before drying out regionwide by the end of the week.</p> <p>Streamflow: Minor rises on the US side in the middle of the week. Otherwise, flat and receding.</p>

<b>Week</b>	<b>Weekly Weather / Precipitation Retrospective</b>
December 1, 2025	<p>Temperatures: Rose to well above average by the end of the week.</p> <p>Precipitation: Initially drier than average but became wetter than average during the second half of the week.</p> <p>Streamflow: Mostly flat flows aside from a few late week rises in the Lower Tribs and Yakima.</p>
December 8, 2025	<p>Temperatures: Remained much warmer than average, especially on the US side where a few records were broken.</p> <p>Precipitation: Much wetter than average as a very anomalous atmospheric river impacted the northern two-thirds of the Columbia Basin.</p> <p>Streamflow: Strong rises were observed in many basins. The Dalles natural flows just peaked around 300 kcfs, which is lower than the typical spring runoff but rather unprecedented for December. Extensive flooding occurred in the Skagit and Snohomish Rivers in western Washington, while several other rivers approached flood stage across Washington, northern Idaho, and western Montana.</p>
December 15, 2025	<p>Temperatures: Started the week 10-15°F above average but dropped closer to normal by the end of the week.</p> <p>Precipitation: Continued wetter than average conditions. Near-record precipitation fell in western Oregon on Thursday with an atmospheric river.</p> <p>Streamflow: Moderate to strong rises were observed in the Upper Tribs, Lower Tribs, and Snake/Clearwater. Smaller rises were observed in the Spokane, Kootenay, and Upper Columbia basins.</p>
December 22, 2025	<p>Temperatures: Warmer than average to start the week but ended near average by the weekend.</p> <p>Precipitation: A mix of wetter and drier than average conditions throughout the Basin as showery rain and mountain snow fell throughout the week.</p> <p>Streamflow: Aside from a few minor bumps, flows were flat and receding due to the cooler temperatures. Much of the precip across the region fell as snow.</p>
December 29, 2025	<p>Temperatures: Colder than average most of the week but warmed above average this past weekend.</p> <p>Precipitation: Dry most of the week before precipitation returned on New Year's Day, continuing through the weekend.</p> <p>Streamflow: Aside from a few bumps early in the week in the Snake and Clearwater, flows were flat and receding due to the drier conditions and cooler temperatures.</p>
January 5, 2026	<p>Temperatures: Slightly warmer than average.</p> <p>Precipitation: Wetter than average BC and western Washington. Near average elsewhere.</p> <p>Streamflow: Minor rises were observed in the Spokane, Clearwater, and Lower Tribs.</p>
January 12, 2026	<p>Temperatures: Began the week much warmer than average before cooling closer to average by the weekend.</p> <p>Precipitation: Drier than average. Some early week precipitation was observed in British Columbia and western Washington, but otherwise the basin was completely dry.</p> <p>Streamflow: Early week, mostly minor, rises were observed in the Upper Columbia, Kootenay, Upper Tribs, and Yakima basins.</p>
January 19, 2026	<p>Temperatures: Began the week slightly below average but cooled to well below average around the end of the week.</p> <p>Precipitation: Very dry conditions during what is normally a wet time of year for the Columbia Basin.</p> <p>Streamflow: Flat streamflows were observed.</p>
January 26, 2026	<p>Temperatures: Below average to begin the week; rose to well above average and close to record warmth by this past weekend.</p> <p>Precipitation: Drier than average though precip returned to the northern half of the Basin late in the week.</p> <p>Streamflow: Mostly flat streamflows were observed.</p>

<b>Week</b>	<b>Weekly Weather / Precipitation Retrospective</b>
February 2, 2026	<p>Temperatures: Warmer than average. Near-record warmth during the middle of the week for the PNW load centers.</p> <p>Precipitation: Much drier than average.</p> <p>Streamflow: Mostly flat streamflows were observed with the dry conditions.</p>
February 9, 2026	<p>Temperatures: Began the week above average but cooled to near average by the end of the week.</p> <p>Precipitation: Some precipitation fell early in the week in Oregon and Idaho. Aside from that, the Basin was fairly dry.</p> <p>Streamflow: Minor rises were observed early in the week in the Spokane, Clearwater, and Lower Tribs.</p>
February 16, 2026	<p>Temperatures: Well below average. Eastern Washington (including Spokane) saw its coldest temperatures so far this winter.</p> <p>Precipitation: Showery precipitation ended up near average on the US side and slightly drier than average on the Canadian side.</p> <p>Streamflow: A few early week rises ended up slightly higher than expected but were minor. Flat and receding flows the rest of the week.</p>
February 23, 2026	<p>Temperatures: Near average.</p> <p>Precipitation: Near average, with early-week precip targeting the northern half and late-week precip targeting the southern half of the basin.</p> <p>Streamflow: Minor rises, namely in the Spokane, Upper and Lower Tribs, and Lower Snake.</p>
March 2, 2026	<p>Temperatures: Slightly above average though there were some ups-and-downs during the week.</p> <p>Precipitation: Near average.</p> <p>Streamflow: Minor rises, especially in the Spokane, Upper and Lower Tribs, and Lower Snake.</p>
March 9, 2026	<p>Temperatures: Colder than average across most of the basin. Stubborn cold air around the end of the week led to snowfall in Seattle and Spokane on Friday.</p> <p>Precipitation: Well above average with a long-duration atmospheric river targeting the northern half of the Basin. Several daily rainfall records were broken.</p> <p>Streamflow: Most basins saw rises this past weekend, though colder-than-expected temperatures muted the response especially in the Clearwater, Spokane, and Lower Snake as precip fell as snow.</p>
March 16, 2026	<p>Temperatures: Well above average temperatures. Some records were broken in Oregon and Idaho.</p> <p>Precipitation: Well above average in British Columbia and western Washington as another long-duration atmospheric river ensued. Drier than average elsewhere.</p> <p>Streamflow: Strong rises were observed early in the week with Lower Granite peaking at 110kcfs and The Dalles at 225kcfs. Smaller rises were observed late in the week due to precip and snowmelt.</p>
March 23, 2026	<p>Temperatures: Above average far southern basin. Otherwise, near average with slight cooling around the end of the week.</p> <p>Precipitation: Near average for most of the basin.</p> <p>Streamflow: Rises were observed early in the week across virtually all basins, with secondary, late-week rises in the lower elevation basins.</p>
March 27, 2026	<p>Temperatures: Mostly average throughout the basin. The Snake did see some below average temperatures.</p> <p>Precipitation: Above average across the basin outside of upper Canada.</p> <p>Streamflow: No big streamflow response as most of the precipitation came as snow.</p>

## 2.2. Seasonal Flow Objectives

Project	Planning Dates	Seasonal Flow Objectives – (kcfs)	2026 Season Average Flow (kcfs)
Priest Rapids	Spring 4/10–6/30	135	
McNary	Spring 4/10–6/30	220	
	Summer 7/1–8/31	200	
Lower Granite	Spring 4/3–6/20	93	
	Summer 6/21–8/31		

- i. Varies according to NWRFC April forecast.
- ii. Varies according to NWRFC June forecast.

## 2.3. Flood Risk Management

Flood Risk Management (FRM) Elevations and April 10 objective elevations per each forecast period are listed in the table below. Forecasted FRM elevations will be calculated beginning in December after the Libby and Dworshak water supply forecasts are available. Subsequent forecasted FRM requirements will be updated after the final water supply forecasts are available January-April.

Grand Coulee and all Canadian projects will be operated for FRM. Hungry Horse and Libby will be operated for Variable Q (VARQ) Flood Control. Beginning in January, the Corps calculates Upper Rule Curve elevations based on the monthly official final forecasts. Projects are operated using these elevations as an upper limit, with the objective of reaching their spring refill elevations. Detailed FRM operations are available at the following website.

<https://www.nwd.usace.army.mil/CRWM/Forecasts/>

The April 10 elevations shown in the table below are calculated by linear interpolation between the March 31 and April 15 forecasted FRM elevations.

Project	Elevation Date Objective	Dec	Jan	Feb	Mar	Apr
Libby	Dec 31	2411				
	Jan 31		2374.4			
	Feb 28		2342.8	2383.9		
	March 31		2331.0	2377.7	2380.2	
	April 10		2331.0	2377.7	2380.2	
	April 15		2331.0	2377.7	2380.2	2363.5
	April 30		2331.0	2377.7	2380.2	2363.5
Hungry Horse	Jan 31		3543.1			
	Feb 28		3537.4	3547.0		
	March 31		3531.0	3545.8	3548.2	
	April 10		3528.9	3545.5	3548.1	
	April 15		3527.8	3545.3	3548.0	3546.4
	April 30		3524.5	3544.7	3547.9	3546.0
	Jan 31		1290.0			

Project	Elevation Date Objective	Dec	Jan	Feb	Mar	Apr
Grand Coulee	Feb 28		1290.0	1290.0		
	March 31		1270.2	1283.1	1279.3	
	Drum Gate April 10		1253.0	1253.0	1253.0	1253.0
	April 15		1256.3	1271.0	1265.5	1267.6
	April 30		1246.6	1259.9	1255.7	1256.7
Brownlee	Jan 31		2077.0			
	Feb 28		2048.1	3054.2		
	March 31		2043.1	3055.3	2054.2	
	April 15		2041.4	2058.7	2058.2	2068.4
	April 30		2040.5	2059.9	2058.5	2070.5
Dworshak	Jan 31		1554.9			
	Feb 28		1557.9	1567.2		
	March 31		1571.8	1581.7	1570.1	
	April 10		1579.1	1588.4	1577.4	
	April 15		1582.7	1591.8	1581.1	1575.5
	April 30		1573.6	1588.0	1571.2	1570.6

FRM storage requirements for John Day and middle Columbia projects if needed for system FRM will appear here and will be updated throughout the season.

## ***2.4. Storage Project Operations***

### **Libby Dam**

**End of December Flood Risk Management Elevation:** The Corps will provide inseason updates to this section.

As described in the 2020 CRS BA (page 2-12), Libby Dam operations follow a variable end-of-December FRM rule curve based on the water supply forecast. In most years, the target elevation is 2,411 feet, but this target may be relaxed up to 2,426 feet when the water supply forecast is below normal (5.9 MAF). The project is operated during the December-through-March period (into April if the start of refill has not been declared) in accordance with the updated VARQ FRM storage reservoir diagram, as shown in Figure 2.5. The drawdown is based on the first of month April-to-August water supply forecast, which then sets the end-of-month draft or drawdown targets. The use of the SRD and the first-of-the-month forecast results in higher water supply estimates that correspond to deeper reservoir drafts and shallower reservoir drafts for years during which water supply is forecasted to be low.

The December 2025 end of month FRM elevation was 2411 feet. Due to powerhouse discharge capacity limitation the forebay elevation on December 31 was 2416.7 feet. The limit to discharge extended into February. The forebay elevation intersected the end of February FRM elevation of 2383.9 feet at the end of February.

**Variable Outflow (VARQ) FRM Elevation:** The Corps will provide inseason updates to this section.

Follow updated VARQ FRM procedures. When not operating to minimum flows, the Corps will operate Libby Dam to achieve a 75 percent probability of reaching the elevation objective to provide spring flows (upper FRM rule curve on or about April 10; the exact date will be determined in season, based on the Corps Seattle District Libby Dam April through August forecast of water volume in the Kootenai River Basin of the CRS).

**Bull Trout Flows:** The Corps will provide inseason updates to this section.

From May 15 to May 31 and during the month of September, a minimum flow of 6,000 cfs will be discharged. Volume to sustain the basal bull trout minimum flow of 6,000 cfs from May 15 through May 31 will be accounted for with sturgeon volumes, and in the fall will be concurrent with the autumn FRM draft. The Action Agencies will provide minimum bull trout flows of 6,000 cfs May 15 through September, and up to 9,000 cfs after the sturgeon pulse through August 31, as determined by Table 9 below. Minimum flows of 4,000 cfs will be provided for the rest of the year.

**Table 8. Minimum bull trout releases from Libby Dam after the sturgeon pulse–August 31, based on May final Libby water supply forecast for April–August period. The May 15–May 31 and all of September minimum is 6 kcfs.**

Libby Forecast Runoff Volume (MAF*)	Minimum bull trout flows between sturgeon and salmon flows (kcfs)
forecast < 4.80	6 kcfs
4.80 ≤ forecast < 6.00	7 kcfs
6.00 ≤ forecast < 6.70	8 kcfs
6.70 ≤ forecast	9 kcfs

\*MAF = million acre-feet

*(This table has been modified from BA Table 2.3 to clarify implementation details, but there are no modifications to the operation that was consulted on with the Services)*

**Tiered Kootenai River White Sturgeon Augmentation Volumes:** The Corps will provide inseason updates to this section.

Operate to provide tiered Kootenai River white sturgeon augmentation volumes to achieve habitat attributes for sturgeon spawning/recruitment during all or portions of May, June, and July (as determined by WSF), shaped by the FPIP team process in coordination with the Regional Forum including the TMT.

**Summer Operations:** The Corps will provide inseason updates to this section.

During the summer, the AAs draft Libby Dam within the specified draft limits in the 2020 CRS BA based on flow recommendations coordinated at TMT. The AAs consider a number of factors when developing flow recommendations for TMT to review, such as: the impact of flow

fluctuations on bull trout and other resident fish below the project, the status of juvenile salmon outmigration in the lower Columbia River, attainment of flow objectives, water quality, and the effects that reservoir operations will have on other listed and resident fish populations.

**Refill:** The Corps will provide inseason updates to this section.

Provide for summer flow augmentation; attempt to refill within 5 feet of full (full is 2,459 feet) in July or early August while also managing total dissolved gas and meeting FRM objectives.

**End of September Elevation Target:** The Corps will provide inseason updates to this section.

Provide summer flow augmentation to provide flow augmentation draft limits for anadromous fish in the Columbia River as determined by the May Libby water supply forecast. The Corps attempts to draft consistent with the values provided in Table 2.1, and drafts range from 5 to 20 feet from full depending on water supply conditions.

As described below in the 2020 CRS BA (Page 2-13, Table 2.1), the end of September draft is based on the May final Corps Libby Dam water supply forecast from April to August.

**Table 9. End-of-September elevation draft limits for summer flow augmentation at Libby Dam**

Local Water Supply Forecast (percentile) <sup>a</sup>	Minimum	Less than or Equal to 15th Percentile	25th Percentile	75th Percentile	Greater than or Equal to 85th Percentile	Maximum
End-of-September elevation target (feet)	2,439	2,439	2,449	2,449	2,454	2,454

<sup>a</sup> Based on the May final Corps Libby Dam water supply forecast from April to August. The 15th percentile, or 15% driest years, is currently approximately 4.66 MAF, the 85th percentile is currently approximately 7.33 MAF—both based on the current official 30-year period of 1981 to 2010. These values will be updated based on the next official 30-year period from 1991 to 2020 in early 2021.

**Minimum Outflows:** From October 1 through May 14, release a minimum of 4,000 cfs.

**Limit Outflow Fluctuations:** Limit outflow fluctuations by operating in accordance with the ramping rates to avoid stranding bull trout and resident fish.

### **Hungry Horse Dam**

November through December of 2025 inflow increased sufficiently to fill approximately 10' from elevation 3540 feet to approximately elevation 3550 feet before the end of December.

**Water Supply Forecast and Minimum Flows:** The Reclamation will provide inseason updates to this section.

The minimum flow requirements are measured at two locations, 1) the South Fork Flathead River below Hungry Horse Dam and 2) the Flathead River at Columbia Falls. The minimum

flows will be determined monthly, beginning in January, with the Reclamation’s WSF forecast for Hungry Horse Reservoir for the period of April 1 to August 31. The final flow levels, for the remainder of the calendar year, are based on the March Final forecast. The table below shows how minimum flows are determined based on the Hungry Horse April through August water supply forecast.

The 2026 March Final forecast for Hungry Horse Dam was 1805 kaf at 88% of average which sets the minimum flow at Columbia Falls at 3500 cfs and the project minimum at Hungry Horse Dam at 900 cfs.

**Table 8. Minimum Flows at Hungry Horse and Columbia Falls.**

Hungry Horse Apr–Aug inflow forecast (KAF)	Hungry Horse min flow <sup>a</sup> (CFS)	Columbia Falls min flow (CFS)
< 1190	400	3200
1190 – 1790	Interpolate between 400-900	Interpolate between 3200-3500
> 1790	900	3500

a. To prevent or minimize flooding on the Flathead River above Flathead Lake, Hungry Horse discharges can be reduced to a minimum flow of 300 cfs when the stage at Columbia Falls exceeds 13 feet.

**April 10 and June 30 Refill Objectives:** The Reclamation will provide inseason updates to this section.

The Reclamation computes Hungry Horse’s final April 10 elevation objective by linear interpolation between the March 31 and April 15 forecasted flood control elevations based on the March Final WSF.

**Summer Draft Limit:** The Reclamation will provide inseason updates to this section.

The summer operation will target the reservoir elevation of 3540 feet to 3550 feet (20 feet to 10 feet from full) by September 30 and this will be based on the water supply forecast. However, if the project fails to refill, especially during drought years, minimum flow requirements may draft the reservoir below the end of September target elevation. The table below shows the end of September targets based on the Hungry Horse May water supply forecast.

### Hungry Horse End of September Elevation Targets

Hungry Horse May-September inflow forecast (KAF)	Hungry Horse forebay target on Sept 30 (ft)
< 1410	3540
1410 – 1580	Interpolate between 3540-3550
> 1580	3550

### Grand Coulee Dam

**April 10 and June 30 Refill Objective:** The Reclamation will provide inseason updates to this section.

The Reclamation computes Grand Coulee’s final April 10 elevation objective by linear interpolation between the March 31 and April 15 forecasted flood control elevations based on the March Final WSF for The Dalles.

For 2026 the forecasted FRM elevations based on the March Final WSF of 84.3 maf computed above the drum gate maintenance elevation. The official April 10 elevation objective for 2026 is 1253.0 feet during a drum gate maintenance period.

**The Lake Roosevelt Incremental Storage Release Program:** The Reclamation will provide inseason updates to this section.

The incremental draft, when fully developed, would result in a release of 82,500 acre-feet in most years, or about 1.0 foot of draft at Lake Roosevelt. In years when the March final forecast of April through September runoff at The Dalles is less than 60 MAF, an additional draft of 50,000 acre-feet for interruptible water users and instream flow will occur, for a total draft of 132,500 acre-feet or about 1.8 feet of draft.

**Table 9. Lake Roosevelt releases requested for 2026.**

“Bucket”	2026 Releases (acre-feet)	Total Lake Roosevelt Incremental Storage Releases Program (acre-feet)
Odessa		
M&I		
Instream Flow		

**Summer Draft Limit:** The Reclamation will provide inseason updates to this section.

The Grand Coulee summer draft limit is set by the magnitude of the RFC's July Final April-August WSF at The Dalles Dam.

**Drum Gate Maintenance:** The Reclamation will provide inseason updates to this section.

Due to required maintenance intervals (i.e. 1 in 3 criteria), drum gate maintenance is required in 2026. Drum gate maintenance in 2026 will begin on March 16 and be completed by May 15.

**Banks Lake:** The Reclamation will provide inseason updates to this section.

### ***Dworshak Dam***

**Flood Risk Management Elevation:** Inflow to Dworshak during December of 2025 filled the reservoir over 40 feet to reach the end of December FRM target elevation.

During the winter and early spring, Dworshak received above average inflow and below average snowpack. To ensure refill, Dworshak focused on capturing inflow, bringing the pool approximately 50 feet above the 30 year average by the month of March.

Operate in accordance with FRM criteria; shift system FRM to Grand Coulee Dam when possible, unless modified by procedures under dry-water-year operations. The shift in system FRM space will end by April 30th, such that each project storage will satisfy their respective FRM space requirements. As described in the annual Water Management Plan the AA's did shift FRM requirements from Dworshak to Grand Coulee Dam in an effort to increase the likelihood of higher flows in the Snake River during the spring migration.

**April 10 Elevation Objective:** Due to basin conditions during the spring, the Corps did not operate to the April 10 elevation objective at Dworshak.

Based on the unique water supply conditions as noted above during the period of December 2025 through March of 2026 (above average inflow with below average snowpack) as well as balancing FRM operations, considering Dworshak National Fish Hatchery operational objectives, and ensuring refill, the Corps did make an adjustment to the April 10 forebay elevational objective. These adjustments were made in coordination with regional sovereigns during the April 1 TMT meeting.

**Variable Draft Limit:** The Corps will provide inseason updates to this section.

Calculate a VDL in season to increase power generation from January to March, while protecting the ability to refill with 95% confidence based on the March 31 FRM upper rule curve.

**Total Dissolved Gas:** The Corps will provide inseason updates to this section.

Provide augmentation flows while not exceeding the state of Idaho TDG water quality standard of 110 percent saturation.

**Refill:** The Corps will provide inseason updates to this section.

Refill by about June 30 or earlier in dry years (exact date to be determined during in-season management).

**End of August and September Forebay Elevations:** The Corps will provide inseason updates to this section.

Draft no lower than an elevation of 1,535 feet by the end of August and to an elevation of 1,520 feet (80 feet from full) by the end of September, unless modified per the agreement between the United States and the Nez Perce Tribe for water use in the Dworshak Reservoir.

**Outflows for Lower Granite Dam Tailwater Regulation:** The Corps will provide inseason updates to this section.

Regulate outflow temperatures to attempt to maintain water temperatures in the Lower Granite Dam tailwater at or below 68°F, typically from July 1 through the end of September.

### ***John Day and middle Columbia FRM Operations***

The Corps will provide inseason updates to this section.

### ***Water Quality***

The AAs have coordinated the following spill priority lists with the TMT to date, and they may be found on the following website.

<https://public.crohms.org/tmt/documents/spill-priority/>

### ***2.5. Burbot Spawning Operations***

Provide the lowest discharge temperatures available in the reservoir forebay through use of Libby Dam's selective withdrawal system to aid burbot migration and spawning in the Kootenai River in Idaho (October through February). An international interagency Memorandum of Understanding Concerning the Kootenai River/Kootenay Lake Burbot Conservation Strategy was completed in June 2005. Use of VARQ FRM procedure and implementation of the variable end-of-December FRM target elevation may increase the effectiveness of this operation in years with below average runoff forecasts (low flows / colder river temperature at Bonners Ferry).

### ***2.6. Lake Pend Oreille Kokanee Elevation (Albeni Falls Dam)***

Albeni Falls Dam drafted Lake Pend Oreille to within 0.5' of its winter control minimum elevation for Kokanee spawning on 11 November. This half of foot band lasted until the end of Kokanee spawning on 31 December.

### ***2.7. Upper Snake Flow Augmentation***

The Reclamation will provide inseason updates to this section.

## 2.8. Chum Operation

The following summarizes the 2025/2026 TMT coordinated chum operation. Additional information on the TMT coordinated chum operation may be found in the TMT meeting minutes on the following website.

<https://public.crohms.org/tmt/>

Date	TMT Coordination Summary
October 22, 2025	<p>The Corps, reminded the group that the chum operation in previous years has been coordinated for the first week in November or when chum arrive, and that the operation should be finalized at today’s meeting for implementation on November 1. The Corps noted that at this point, the plan is to implement the same operation as last year.</p> <p>Bonneville Dam (BON) at 0600 hours this morning had a total outflow of 83 kcfs with a tailwater elevation of 7.9 feet. The RFC inflow forecast over the next 10-day period ranges from a low of 89 kcfs on October 24 to a high of 109 kcfs on October 31. The National Weather Service (NWS) long-term climate forecasts indicate La Niña conditions persisting from December 2025 through February 2026, transitioning to ENSO-neutral likely January through March 2026. The NWS 6-10-day climate forecast for the Columbia Basin shows primarily a probability of below average temperatures and a probability of above average precipitation.</p> <p>BPA, reported that while precipitation is in the forecast, stream flow response remains uncertain. 10-day forecasts for the Willamette and Hood Rivers don’t predict a sufficient response to reduce the flow required to support a BON tailwater elevation for chum. Only a couple of chum have been observed over the dam so far. Due to potential impacts from dry conditions on Lake Roosevelt, instead of starting the chum operation at 11.3 feet on November 1, BPA proposed a starting tailwater elevation of 10.5 feet on November 1, with a transition to 11.3 feet by November 4.</p> <p>Reclamation, noted that Reclamation supports using storage from Lake Roosevelt to support chum; Reclamation emphasized the potential impacts of starting too early, including affecting resident fish in Lake Roosevelt and potentially impacting spring refill; Reclamation also reminded TMT of this year’s forced drum gate maintenance. Reclamation offered that an additional TMT meeting next week could provide more information for consideration. BPA reminded the group that any changes to the planned operation must be received before Tuesday October 28 at 1000 hours.</p> <p>The Confederated Tribes of the Colville Reservation (CTCR), highlighted concerns for pelagic feeders at Lake Roosevelt and impacts due to earlier drafts of</p>

Date	TMT Coordination Summary
	<p>the reservoir if starting at 11.3 feet on November 1. CTCR preferred a start date of November 4 at 11.3 feet to reduce impact on resident fish and were open to continued discussion. Tony clarified that a two-foot draft in Lake Roosevelt would occur with a start date of November 1 at 11.3 feet, with impacts realized in November and less in January-March 2026.</p> <p>TMT Members discussed the following options for the start of the chum operation at BON:</p> <ol style="list-style-type: none"> <li>1. November 1 minimum tailwater elevation at 10.5 feet, transition to 11.3 feet by November 4.</li> <li>2. November 1 minimum tailwater elevation at 11.3 feet.</li> <li>3. November 4 minimum tailwater elevation at 11.3 feet.</li> </ol> <p>Some Fish Managers expressed concern that chum cannot access their habitat if water is not present, currently there is not enough water for chum to access certain areas. WA emphasized that higher tailwater elevation is needed to provide habitat access especially to Hamilton Creek and surrounding areas; WA strongly preferred the 11.3-foot starting elevation on November 1 (Option 2).</p> <p>WA also noted that the next fish survey is expected after precipitation events and could provide confirmed chum presence; also, CRITFC forecasts predict a wet November and a slightly drier December.</p> <p>OR/FPAC Chair also supported this option, referencing previous FPAC direction, and emphasized that from their perspective, chum presence was evident. ID was generally open to either option and was curious about Lake Roosevelt resident fish concerns while acknowledging drum gate maintenance as a significant factor.</p> <p>MT was supportive of starting on November 1 at 11.3 feet, and, acknowledging concerns on the extra 2 feet of draft, was comfortable with Option 1.</p> <p>After conversation, CTCR , who initially suggested Option 3 (above) indicated CTCR would be amenable to Option 1 (10.5 feet November 1, 11.3 feet November 4), so further discussion of 11.3 feet on November 4 was tabled.</p> <p>Following the detailed discussion and clarifications, although WA still preferred a starting elevation of 11.3 feet on November 1 and CTCR preferred a starting elevation of 11.3 on November 4, both WA and CTCR were amenable to the 10.5-foot elevation on November 1 and gradual increase to 11.3 feet by November 4 (Option 1). An additional TMT meeting next week became unnecessary.</p> <p>Action Agency Implementation</p> <p>The chum operation will begin on November 1 with a BON minimum tailwater elevation at 10.5 feet, transitioning to a minimum tailwater elevation of 11.3 feet</p>

Date	TMT Coordination Summary
	by November 4 (with a potential for earlier transition to 11.3 feet if precipitation and streamflow allow). The TMT will be notified of any adjustments.
November 5, 2025	<p>The Corps, reminded the group of the chum operation coordinated at the October 22 meeting: starting November 1, a Bonneville Dam (BON) target tailwater elevation range of 10.5 feet – 11.2 feet, transitioning on November 4 to a range of 11.3 feet – 13.0 feet. He reported the operation is ongoing as coordinated (currently in the spawning phase) and coordination for the incubation phase will take place in December. Details on the operation are posted to the TMT website for reference.</p> <p>BON at 0700 hours this morning had a total outflow of 133 kcfs with a tailwater elevation of 12 feet. The RFC inflow forecast over the next 10-day period ranges from a low of 115 kcfs on November 6 to a high of 136 kcfs today. So far this water year, which began October 1, precipitation in the Snake River Basin above Ice Harbor is above normal, with 2.2 inches (107% of normal); the upper Columbia River Basin above Arrow (ARDB) observed 5 inches (87%); the Columbia River mainstem above The Dalles (TDA) observed 2.8 inches (97%); and the Willamette River Basin above Portland observed 7.1 inches (103%).</p> <p>BPA, noted that Lake Roosevelt filled to almost 1,288 feet just prior to the start of the chum operation. Hamilton Creek had a sharp peak (~4 feet over gauge) then settled to about 2 feet over, with flows providing good access over the riffle. BPA observed Chinook spawning on the riffle, a chum entering Hamilton Creek, and about 4 chum with a couple coho in the Hamilton Springs channel. Precipitation trends are expected to continue to supply water to support the chum operation and lessen forecasted impacts to Lake Roosevelt elevations. Almost 200 chum have passed BON, tracking similar to 2023/2024.</p> <p>Reclamation, emphasized that current and incoming precipitation is helping to support the chum operation and storage at Grand Coulee (GCL), which is just a bit above average for this time of year; conditions are very similar to last year at this time.</p> <p>WA, added that chum are present and spawning, observed in the Ives/Pierce complex and Hamilton Creek and Grays areas. Updated ground survey results are pending and WA can provide them to TMT representatives prior to posting if desired.</p>
November 19, 2025	<p>The Corps, noted the Corps’ website is experiencing technical issues and will be fixed as soon as possible. The Corps reminded the group that coordination for the next phase of the chum operation, the incubation phase, will take place during the December 17 TMT meeting; he encouraged TMT Members’ attendance at the meeting.</p> <p>Bonneville Dam (BON) at 0800 hours this morning had a total outflow 130 kcfs with a tailwater elevation of 11.6 feet. The RFC inflow forecast over the next 10-</p>

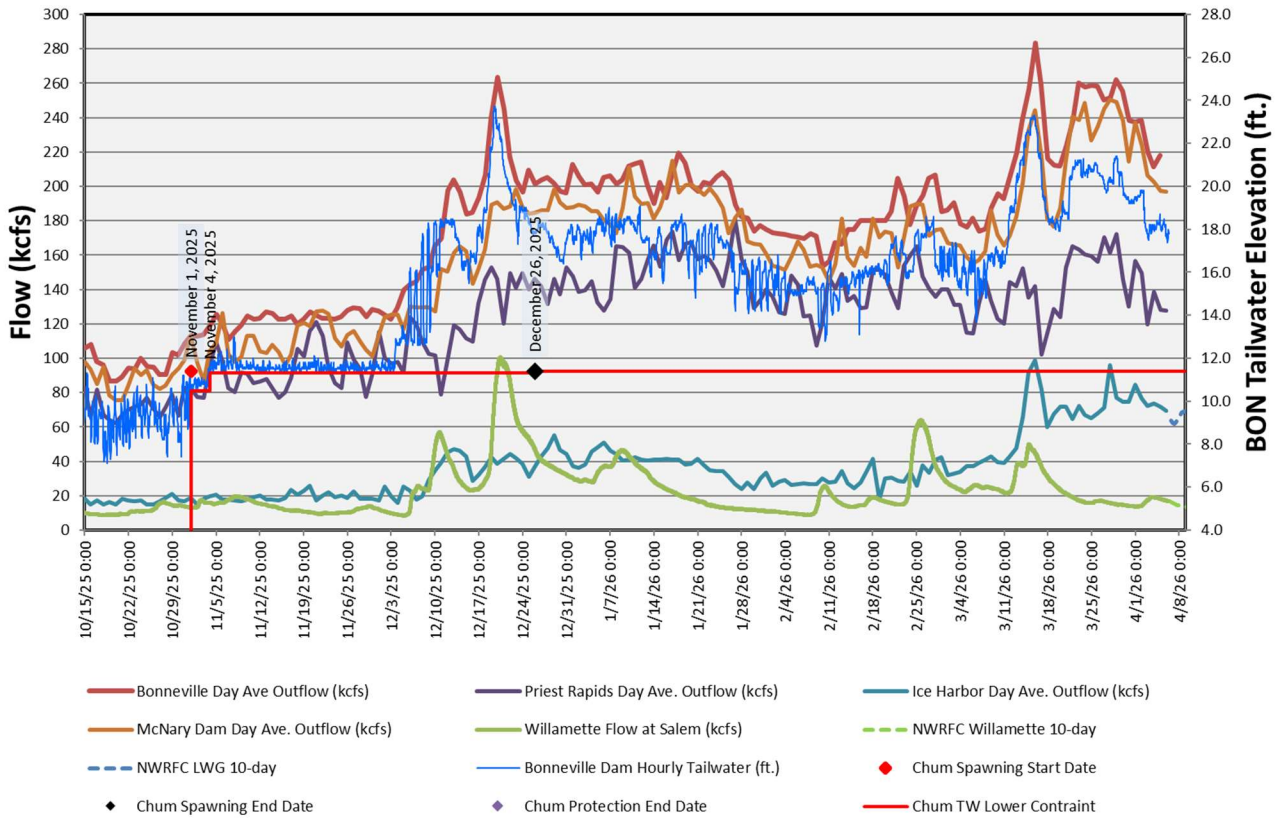
Date	TMT Coordination Summary
	<p>day period ranges from a high of 144 kcfs today to a low of 121 kcfs on November 28. Observed precipitation for the current water year (starting October 1) remains below average; the Snake River Basin above Ice Harbor Dam (IHR) is 91% of normal (2.9 inches); the upper Columbia River Basin above Arrow (ARDB) is 88%; the Columbia River mainstem above The Dalles (TDA) is 97%; and the Willamette River Basin above Portland is 84%.</p> <p>BPA, noted things are looking good; BPA does not expect any significant water management impacts to support the chum operation moving forward.</p> <p>NOAA, reported the BON YTD chum count at 437, with counts last week ranging 10-20. Spawning survey counts from November 12 at the Ives/Pierce complex show 174 live and 62 redds. WA reviewed a complete summary table of chum surveys, which has been distributed to TMT Members. Following a query from USFWS, it was clarified that for November 18 at Ives/Pierce, redd counts should be noted in the table at 93 (rather than dead chum as recorded).</p>
December 17, 2025	<p>The Corps, emphasized that Action Agencies' goal for the meeting was to set the Bonneville Dam (BON) minimum tailwater elevation for the incubation phase of the Chum operation. BON at 0800 hours this morning had a tailwater elevation of 18.1 feet with outflows of 207 kcfs. The RFC inflow forecast over the next 10-day period ranges from a high of 250 kcfs on December 18 to a low of 191 kcfs on December 26.</p> <p>Precipitation and temperatures for the month are significantly above average across the basin, for example, the Columbia above Arrow (ARDB) is at 280% of normal precipitation. Both the 6-10-day and 8-14-day climate outlooks indicate above-average temperatures and precipitation.</p> <p>BPA, noted that BPA expects to remain at current flow levels at least through the next 10 days at a minimum prior to hopefully seeing a recession in flows. Field surveys show significant inundation at Hamilton Creek/Hamilton Island, but conditions and reduced visibility have hampered the effectiveness of surveying. WA, reported that monitoring crews observed very few fish during recent visits, and evidence suggests that spawning peaked in mid-late November, declining substantially since then.</p> <p>TMT members discussed typical desired tailwater bands for chum spawning and incubation, noting preferred optimal protection levels. From Washington's perspective, spawning is over. Given current conditions, survey data, and forecasted sustained high flows (which make maintaining higher target bands unrealistic short-term), they recommended setting a minimum BON tailwater elevation of 11.4 feet for the chum incubation phase starting on December 26.</p> <p><b>Action Agency Implementation</b> The chum spawning phase will transition to the incubation phase on Friday, December 26, 2025, with a minimum BON tailwater elevation of 11.4 feet (hourly</p>

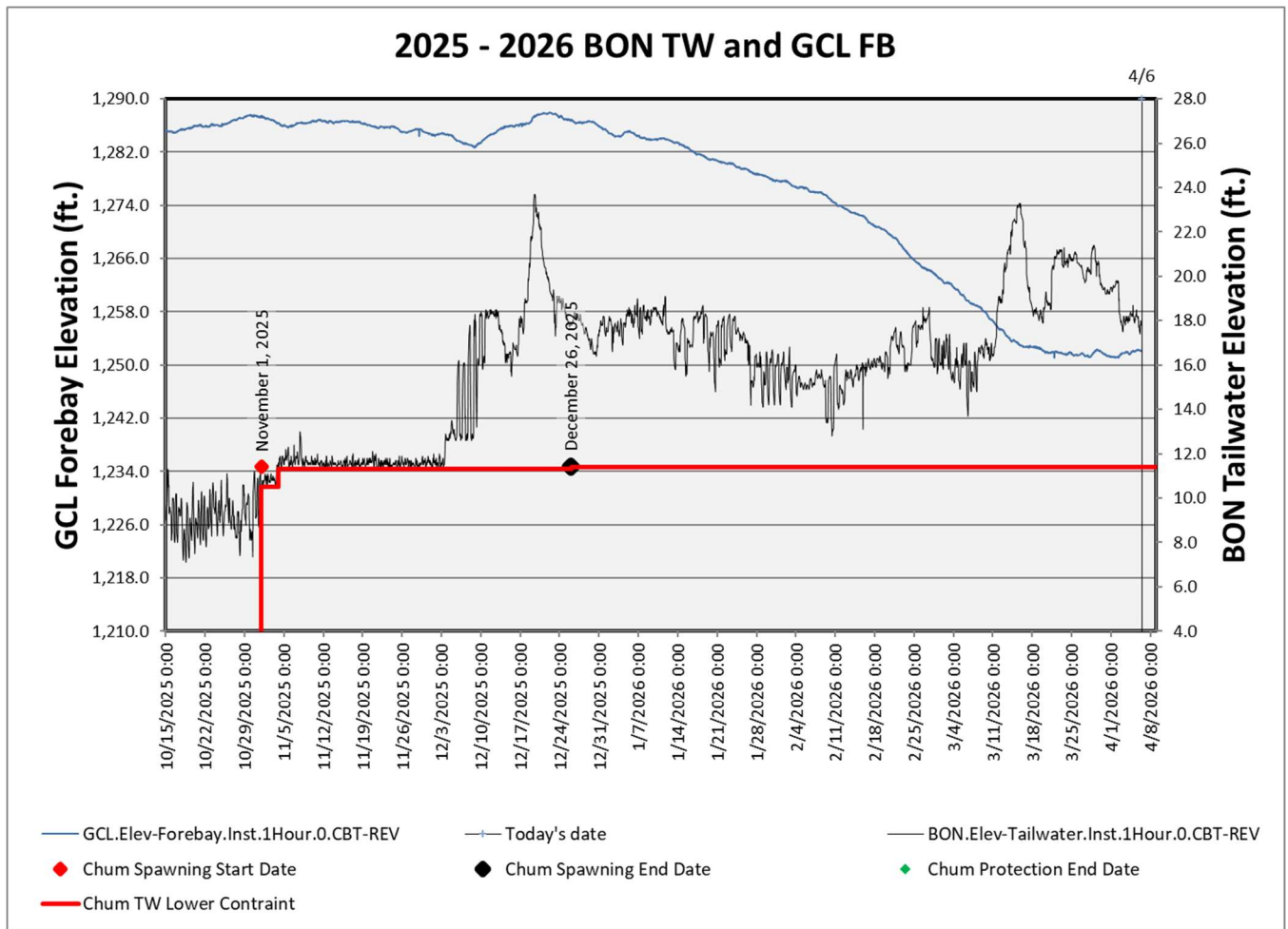
Date	TMT Coordination Summary
	<p>minimum) all hours. It was clarified that the actual tailwater will likely remain above that value in the coming weeks, and it is not an expectation that BON will reach 11.4 feet on December 26. The operation will be revisited to coordinate end-of-incubation actions in April 2026; surveys and monitoring will continue throughout as conditions allow.</p>
<p>January 14, 2026</p>	<p>The Corps, reported on the current conditions and forecasts for chum. The incubation phase (coordinated by TMT on December 17) began on December 26, setting a BON minimum tailwater elevation of 11.4 feet at all hours; the operation will continue through April 9 at midnight unless otherwise coordinated by TMT.</p> <p>The region has been experiencing above average precipitation and temperatures. The Snake River Basin above Ice Harbor (IHR) observed 9.3 inches, or 112% of average; the Columbia River mainstem above TDA observed 12.9 inches, or 119% of average; the Willamette River above Portland observed 27.2 inches, or 88% of average. Seasonal temperatures in the Snake above IHR has been 5.1 °F above average; the Columbia River mainstem above TDA 4.6 °F above average; the Willamette above Portland 2.6 °F above average.</p> <p>The BON tailwater elevation this morning at 0900 hours was 16.6 feet. The RFC inflow forecast over the next 10-day period shows inflows hovering around 211 kcfs. BPA, noted a significant amount of water will remain in the system likely through February at a minimum. Reclamation had nothing further to add. NOAA, reported that the agency expects the BON minimum tailwater elevation to be met based on current conditions and scheduled drum gate maintenance this spring at Grand Coulee (GCL).</p> <p>WA, added that from Washington’s perspective, peak spawning likely occurred earlier this year than in recent years, with peak live observation in the Ives Pierce area and lower sites around November 25; most spawning was complete prior to higher flows. OR, emphasized that environmental conditions, such as high flows and water velocities have impacts on visibility and the ability for observing fish and fish behavior.</p> <p>BPA provided a presentation on 2025 Redd Locations from field observations on December 4, 2025. Monitoring crews noted that spawning was not observed in typical areas like Ives pocket and areas adjacent to Hamilton Island, despite water being available. High flows in mid-December inundated many of these areas. BPA reviewed redd locations measured in 2025, locations since 2016, and locations in relation to water surface elevations for the Ives Channel, McCord Creek, and Woodard Creek. BPA also noted the 2025 BON spawning phase of chum operation in the context of project flows and BON tailwater elevations.</p>
<p>January 28, 2026</p>	<p>The Corps, reported on current conditions and forecasts for chum, noting persisting above average temperature conditions throughout the region. For the current month, the Snake River Basin above Ice Harbor Dam (IHR) has been 2.4 °F above average; the Columbia River Basin mainstem above The Dalles (TDA) has been</p>

Date	TMT Coordination Summary
	<p>2.6 °F above normal; and the Willamette River Basin above Portland has been 1.9 °F above average. The Corps highlighted that for the current water year season, the Columbia River Basin mainstem above TDA has been 3.9 °F above average.</p> <p>The region has been experiencing below average precipitation for the month. The Snake River Basin above IHR observed 1.28 inches, or 52% of average; the Columbia River Basin mainstem above TDA observed 1.59 inches, or 53% of normal; and the Willamette River Basin above Portland observed 3.61 inches, or 42% of average.</p> <p>Outflow at Bonneville Dam (BON) at 0700 hours was 187.6 kcfs, with a project tailwater elevation of 16.0 feet. The RFC 10-day inflow forecast ranges from a high of 199 kcfs on January 28 to a low of 189 kcfs on February 1. The RFC climate forecast over the next 6-10-day period shows a probability of above average temperatures throughout the Columbia Basin, with continued below-average precipitation; the same pattern follows for the 8-14-day outlook.</p> <p>The Corps noted that Action Agencies (AAs) are tracking concerns from Fish Managers regarding the drying conditions. The Corps is running and including early-bird FRM numbers into their modeling; numbers were sent out earlier this week. The Corps emphasized that TMT Members may notice flow decreases at projects like Libby (LIB), as they ramp down early to minimum flows. February FRM values will be adjusted accordingly, and an update will be presented at the next TMT meeting, on February 11.</p> <p>The FPAC Chair/CTUIR/CRITFC, asked if AAs will be able to seek deviations or shift to minimums earlier than expected if dry weather continues, or if shifting must wait until the end of March. The Corps, confirmed that the Corps is considering opportunities, conducting risk analyses, and will work with partner agencies and the districts if deviations are warranted. FRMs for next month are looking high, requiring most reservoirs to drop flows considerably and some reservoirs to drop down to minimums, the Corps will continue to monitor the situation and keep TMT updated.</p> <p>In response to another query from CTUIR regarding Corps decision-making on spill bay usage at McNary (MCN), the Corps, confirmed that more information will be available once the criteria on gate usage is decided (likely before spill season) and once the Corps knows the flow forecasts at the start of April. The Corps also confirmed that the criteria will be developed with RCC and the MCN Dam Safety Group, and that the Safety Group must ultimately sign off on the criteria.</p>

<b>Dates</b>	<b>Chum Water Management Summary</b>
9/1 – 10/30	Grand Coulee filled to ~ 1288 in preparation for the chum operation
10/31	Began moving water for the November 1, start of the chum operation to support a tailwater elevation below Bonneville Dam of 10.5
11/1-11/4	Chum operation began on 11/1 with a minimum TW of 10.5. From 11/1 to 11/3 the BON TW closely tracked the 10.5 minimum. On November 4 the TW operation transitioned to the 11.3 minimum.
11/4 to 12/2	During this period the BON TW closely tracked the minimum TW. Inflow to Grand Coulee during this period averaged ~70 kcfs with average outflow of ~82 kcfs. The operation drafted Lake Roosevelt ~3 feet during this period.
12/3 to 12/8	Significant basinwide precipitation resulted in increased flow in the Snake and Willamette Rivers. The daytime TW was held through 12/8 with nighttime TW increasing from 16 to 18 feet. Day average outflow from BON increase across this period from ~120 kcfs to ~180 kcfs.
12/9 to 12/26	During this period the BON day average outflow increased from 180 kcfs to as high as 260 kcfs. The BON TW ranged from 17 feet to as high as 24 feet. The Willamette at Salem peaked at ~100 kcfs and the Snake River averaged ~40-45 kcfs.
12/27 to 3/14	The draft for drum gate maintenance at Grand Coulee combined with Snake River flow average 35-40 kcfs kept the BON TW ranging from 14-19 feet during this period.
3/15 to 4/6	The draft for drum gate maintenance was completed on time. During this period significant precipitation event increased streamflows across the basin. Inflow to GCL increased to ~140 kcfs with the flow at BON ranging from 220-280 kcfs resulting in a TW downstream of BON peaking at ~23 feet.

## 2025 - 2026 Bonneville Chum Operations





Chum survey data gathered at the Ives/Pierce Island Complex will be summarized in the table below. Data from all Chum survey areas, including the Ives/Pierce Island Complex, are provided by the Fish Passage Center and available on the following website.

[https://www.fpc.org/spawning/spawning\\_surveys/ODFW\\_reports/2025spawning-surveys.htm](https://www.fpc.org/spawning/spawning_surveys/ODFW_reports/2025spawning-surveys.htm)

**Table 10. Chum Salmon Spawning Ground Surveys Below Bonneville Dam, 2025-2026.**

**Survey Area**

**Ives/Pierce Island Complex**

Date	Lives*	Dead**	Redds***	Visibility (feet)
22-Sep-25	0	0	0	6.5 ft
29-Sep-25	NC	NC	NC	0 ft Bad motor issue
6-Oct-25	0	0	0	10.0 ft
17-Oct-25	0	0	0	5.5 ft Bad wind chop
20-Oct-25	0	0	0	12.0 ft
27-Oct-25	0	0	0	12.0 ft

Date	Lives*	Dead**	Redds***	Visibility (feet)
3-Nov-25	4	0	0	4.0 ft
12-Nov-25	174	0	62	8.0 ft
18-Nov-25	498	25	93	8.5 ft
25-Nov-25	274	80	57	7.0 ft
2-Dec-25	110	52	34	8.0 ft
9-Dec-25	0	0	0	0.5 ft High water
15-Dec-25	4	1	0	3.0 ft
22-Dec-25	0	0	0	0.5 ft High water
31-Dec-25	NC	NC	NC	0 ft High water/Wind

\*Lives may include jacks

\*\*Dead are newly sampled fish only

\*\*\*Redds are an instantaneous count for the day, not cumulative.

NC = No Count

### ***2.9. Vernita Bar/Hanford Reach Fall Chinook Protection Program Operations (Non-BiOp Action)***

The Corps will provide inseason updates to this section.

The Hanford Reach Fall Chinook Protection Agreement (Agreement) establishes the obligations of the Parties with respect to the protection of fall Chinook in the Hanford Reach of the Columbia River. The Parties agree that during the term of the Agreement these flow regimes address all issues in the Hanford Reach with respect to fall Chinook protection and the impact of operation of the seven dams operating under Mid-Columbia Hourly Coordination, including the obligations of Grant, Chelan, and Douglas under any new licenses issued by the Federal Energy Regulatory Commission (FERC).

Beginning in mid-October, under the terms of the Hanford Reach Fall Chinook Protection Program Agreement, river flows are reduced every Sunday morning (day of lowest power demand) to the Priest Rapids Dam minimum operating discharge of 36,000 cubic feet per second (ft<sup>3</sup>/s) [1000 cubic meters per second (m<sup>3</sup>/s)]. This allows the Agency and Utility Party Monitoring Team to manually survey for redd distribution at Vernita Bar just downstream of Priest Rapids Dam. These drawdowns occur every Sunday morning until the initiation of fall Chinook spawning has been set both above and below the 50,000 ft<sup>3</sup>/s (1,416 m<sup>3</sup>/s) flow elevations. A final drawdown is conducted on the Sunday prior to Thanksgiving to establish the minimum critical flow needed to protect pre-emergent fall Chinook. Given the previously described limitations, this weekly reduction in river flow affords the best viewing conditions for

aerial flights. Aerial flights are therefore scheduled to be conducted concurrent with the Sunday morning drawdowns, when possible.

Date	Summary
October 19, 2025	<p>Spawning Ground Survey Results:            On Sunday, October 19, 2025 representatives from Grant PUD, and the Washington Department of Fish &amp; Wildlife conducted the first 2025 Vernita Bar spawning ground survey. No completed redds were observed on Vernita Bar. A second spawning ground survey will be conducted next Sunday, October 26 to count redds above and below the 50 kcfs elevation.</p> <p>Flow Request for Sunday, October 26, 2025:            For October 26, please schedule Priest Rapids Dam discharge to be less than 40 kcfs from 0700 to 1500 hours. The redd count will begin at 0900 hours. This will be the second redd survey this year as required by the 2004 Hanford Reach Fall Chinook Protection Program Agreement. Accompanying Grant PUD staff will be a Washington Department of Fish &amp; Wildlife representative.</p>
October 26, 2025	<p>Spawning Ground Survey Results:            On Sunday, October 26, 2025 representatives from Grant PUD and the Washington Department of Fish &amp; Wildlife conducted the second 2025 Vernita Bar spawning ground survey. No completed redds were observed on Vernita Bar. A third spawning ground survey will be conducted next Sunday, November 2, to count redds above and below the 50 kcfs elevation.</p> <p>Flow Request for Sunday, November 2, 2025:            For November 2, please schedule Priest Rapids Dam discharge to be less than 40 kcfs from 0700 to 1500 hours. The redd count will begin at 0900 hours. This will be the third redd survey this year as required by the 2004 Hanford Reach Fall Chinook Protection Program Agreement. Accompanying Grant PUD staff will be a Washington Department of Fish &amp; Wildlife representative.</p>

Date	Summary
November 2, 2025	<p>Spawning Ground Survey Results:  On Sunday, November 2, 2025 representatives from Grant PUD and the Washington Department of Fish &amp; Wildlife conducted the third 2025 Vernita Bar spawning ground survey. Fifty-nine completed redds were observed on Vernita Bar below the 50 kcfs elevation and 2 completed redds were observed above the 50 kcfs elevation. Five redds are required for the Initiation of Spawning both below and above the 50 kcfs elevation. Therefore, the date for the Initiation of Spawning below the 50 kcfs elevation has been set as October 30, 2025. A fourth spawning ground survey will be conducted Sunday, November 9 to determine Initiation of Spawning above the 50 kcfs elevation.</p> <p>Flow Request for Sunday November 9, 2025:  For November 9, please schedule Priest Rapids Dam discharge to be less than 50 kcfs from 0700 to 1500 hours. The redd count will begin at 0900 hours. This will be the fourth redd survey this year as required by the 2004 Hanford Reach Fall Chinook Protection Program Agreement. Accompanying Grant PUD staff will be a Washington Department of Fish &amp; Wildlife representative.</p>
November 9, 2025	<p>Spawning Ground Survey Results:  On Sunday, November 9, 2025 representatives from Grant PUD and the Washington Department of Fish &amp; Wildlife conducted the fourth 2025 Vernita Bar spawning ground survey. Thirty-four completed redds were observed on Vernita Bar above the 50 kcfs elevation. Five redds are required for the Initiation of Spawning above the 50 kcfs elevation. Therefore, the date for the Initiation of Spawning above 50 kcfs has been set as November 6, 2025. A fifth spawning ground survey will be conducted Sunday, November 23 to determine if spawning has ended and establish the Critical Elevation for the 2025-2026 season.</p> <p>Flow Request for Sunday November 23, 2025:  For November 23, please schedule Priest Rapids Dam discharge to be less than 50 kcfs from 0700 to 1500 hours. The redd count will begin at 0900 hours. This will be the fifth redd survey this year as required by the 2004 Hanford Reach Fall Chinook Protection Program Agreement. Accompanying Grant PUD staff will be a Washington Department of Fish &amp; Wildlife representative.</p>

Date	Summary																																																														
November 23, 2025	<p data-bbox="527 226 1421 407">On Sunday, November 23, 2025 representatives from Grant PUD and the Washington Department of Fish &amp; Wildlife conducted the fifth 2025 Vernita Bar spawning ground survey. The intent of this week’s survey was to determine the Critical Elevation for the 2025-2026 protection season and to determine if spawning has ended.</p> <p data-bbox="527 447 1421 772">The results from today’s redd count are provided below in Table 1. As described in the Hanford Reach Fall Chinook Protection Program Agreement, if there are fewer than 15 redds above the 65k elevation, then the Critical Elevation will be the first 5 kcfs elevation above the elevation containing the 16th highest redd. Therefore, using today’s data, the Critical Elevation for the 2025-2026 Protection Season is 65 kcfs. Additionally, based on observations during the survey it was determined that Spawning Period has ended today, November 23 (average end date = Nov. 22).</p> <p data-bbox="527 812 1177 835">Table 1. Summary of redd counts by transect and flow elevation.</p> <table border="1" data-bbox="527 835 1432 1113"> <thead> <tr> <th rowspan="2">Transect</th> <th colspan="6">Redd Count by Flow Elevation (kcfs)</th> <th rowspan="2">Total</th> </tr> <tr> <th>(36 – 50)</th> <th>(50 – 55)</th> <th>(55 – 60)</th> <th>(60 – 65)</th> <th>(65 – 70)</th> <th>(Above 70)</th> </tr> </thead> <tbody> <tr> <td>Above A</td> <td>--</td> <td>9</td> <td>12</td> <td>4</td> <td>0</td> <td>0</td> <td>25</td> </tr> <tr> <td>A – AB</td> <td>--</td> <td>18</td> <td>7</td> <td>1</td> <td>0</td> <td>0</td> <td>26</td> </tr> <tr> <td>AB – B</td> <td>--</td> <td>25</td> <td>16</td> <td>12</td> <td>1</td> <td>1</td> <td>55</td> </tr> <tr> <td>Below B</td> <td>--</td> <td>7</td> <td>3</td> <td>1</td> <td>0</td> <td>0</td> <td>11</td> </tr> <tr> <td>C</td> <td>--</td> <td>4</td> <td>4</td> <td>1</td> <td>0</td> <td>0</td> <td>9</td> </tr> <tr> <td><b>Totals</b></td> <td>--</td> <td><b>63</b></td> <td><b>42</b></td> <td><b>19</b></td> <td><b>1</b></td> <td><b>1</b></td> <td><b>126</b></td> </tr> </tbody> </table> <p data-bbox="527 1146 1432 1581">Protection Periods: Starting on Monday, November 24, we will be in the Pre-Hatch Period. During the Pre-Hatch Period Priest Rapids Outflow may be reduced below the Critical Elevation for up to 8 hours on weekdays and 12 hours on weekends with no two consecutive periods below 65 kcfs. We are projecting that the Post-Hatch Period for the below 50 kcfs elevation will occur on December 7. During this period, flows must remain no less than 15 cm below the 50 kcfs elevation at all times. We are projecting that the Post-Hatch Period for the above 50 kcfs elevation will occur on December 18. During this period, flows must remain no less than 15 cm below the 65 kcfs elevation at all times. I will continue to provide email updates as the season progresses.</p>	Transect	Redd Count by Flow Elevation (kcfs)						Total	(36 – 50)	(50 – 55)	(55 – 60)	(60 – 65)	(65 – 70)	(Above 70)	Above A	--	9	12	4	0	0	25	A – AB	--	18	7	1	0	0	26	AB – B	--	25	16	12	1	1	55	Below B	--	7	3	1	0	0	11	C	--	4	4	1	0	0	9	<b>Totals</b>	--	<b>63</b>	<b>42</b>	<b>19</b>	<b>1</b>	<b>1</b>	<b>126</b>
Transect	Redd Count by Flow Elevation (kcfs)						Total																																																								
	(36 – 50)	(50 – 55)	(55 – 60)	(60 – 65)	(65 – 70)	(Above 70)																																																									
Above A	--	9	12	4	0	0	25																																																								
A – AB	--	18	7	1	0	0	26																																																								
AB – B	--	25	16	12	1	1	55																																																								
Below B	--	7	3	1	0	0	11																																																								
C	--	4	4	1	0	0	9																																																								
<b>Totals</b>	--	<b>63</b>	<b>42</b>	<b>19</b>	<b>1</b>	<b>1</b>	<b>126</b>																																																								

Date	Summary
December 8, 2025	As previously forecasted, we are now in the Post-Hatch Period, which began today, December 8, 2025 for the below 50 kcfs elevation. During this period flows must remain no less than 15 cm below the 50 kcfs elevation at all times. We are projecting that on December 18, 2025 the Post-Hatch period will begin for the above 50 kcfs elevation. During this period flows must remain no less than the Critical Elevation (65 kcfs) elevation at all times. We are projecting that on February 26, 2026 the Emergence and Rearing Periods will begin. During these periods, daily flow fluctuation below Priest Rapids Dam will be limited and the water level at Vernita Bar must be no less than the Critical Elevation (65 kcfs) at all times.
December 18, 2025	As previously forecasted, we are now in the Post-Hatch Period, which began today, December 18, 2025 for the above 50 kcfs elevation. During this period flows must remain no less than the Critical Elevation (65 kcfs) elevation at all times. We are projecting that on February 25, 2026 the Emergence and Rearing Periods will begin. During these periods, daily flow fluctuation below Priest Rapids Dam will be limited and the water level at Vernita Bar must be no less than the Critical Elevation (65 kcfs) at all times.
February 24, 2026	We are projecting that on February 28, 2026 the Emergence and Rearing Periods will begin. During these periods, daily flow fluctuation below Priest Rapids Dam will be limited and the water level at Vernita Bar must be no less than the Critical Elevation (65 kcfs) at all times.
March 23, 2026	<p>We continue to be in the Emergence and Rearing Periods. This Period requires no less than the Critical Elevation (65 kcfs) at all times and flow fluctuation constraints from Priest Rapids Dam. The enhanced weekend minimum flow constraints (CJAD II) are predicted to begin on Saturday, March 28. The enhanced weekend constraints will continue for four consecutive weekends ending on Sunday, April 19. During the CJAD II weekends, the minimum flow below Priest Rapids Dam must be no less than the average of the daily hourly minimum from Monday through Thursday of the current week.</p> <p>See the attached memo for additional details regarding the completed, current, and projected dates of each of the flow constraint Periods as described in the Hanford Reach Fall Chinook Protection Program Agreement. I will continue to provide updates throughout the remainder of the protection season.</p>

### ***2.10. Snake River Zero Generation***

Zero Generation Operations as described in the 2020 CRSO EIS ROD will no longer commence as early as October 15, and will instead commence once the previously defined implementation trigger of “few, if any” actively migrating anadromous fish (as described in SOR 2005-22) has

been met. This trigger will be implemented in relation to both date (implementation will be limited to periods between December 1 and through February 28) and abundance.

Salmon Managers submitted System Operations Request (SOR) 2005-22 Snake River Zero Nighttime and Weekend Flow, to the Action Agencies (AA) on December 6, 2005. The SOR may be found on the following website:

<http://pweb.crohms.org/tmt/sor/2005/2005-22.pdf>

In the SOR, the Salmon Managers provided the AAs with the following table to define the criteria of “... few, if any ...” prior to the implementation of the Zero Generation Operation. The few migrating adult criterion trigger will be defined on a sliding scale outlined in the following table. The table applies to both “wild” and “total” categories of returning adult steelhead.

Table 12: The Few Migrating Adult Criterion Trigger (SOR 2005-22)

<b>Run to date&gt;#</b>	<b>Run to date≤#</b>	<b>Few criteria&lt; #</b>
0	30,000	10
30,000	60,000	20
60,000	100,000	35
100,000	150,000	50
150,000	200,000	65
200,000	250,000	80
250,000		100

System Operations Request 2005-22 defined “few” migrating adults; this SOR has guided operations through 2019. Over time, these criteria have been slightly modified to include:

1. The number of adults migrating per day is defined as the number of upstream counts minus the number of downstream counts, as reported on the Fish Passage Center’s website ([https://www.fpc.org/currentdaily/HistFishTwo\\_7day-ytd\\_Adults.htm](https://www.fpc.org/currentdaily/HistFishTwo_7day-ytd_Adults.htm)).
2. A three-day moving average will be used to determine if the few migrating adult criterion has been met.
3. The criteria apply to both “Unclipped” and “total” categories of returning adult steelhead. “Unclipped” and “total” returns will be calculated separately. Only one of the categories is necessary to show that more than a few adults are migrating.

- The run to date is defined as the cumulative number of adult steelhead in the “Unclipped” and “total” categories passing Lower Granite Dam since July 1st of the return year.

The timing of “*nighttime*” and “*dawn*” changes throughout the year. Based on the hours of actual Civil Twilight at Lower Granite Dam, the following hour ranges were coordinated during the October 21, 2020, TMT meeting to be consistent with the criteria identified in the 2020 CRS BA:

DATES	“NIGHTTIME” HOURS FOR ZERO GEN
December 1-14	1800-0600
December 15 - January 31	1800-0600 + up to 3 daytime hours
February 1-28	1900-0600 + up to 3 daytime hours

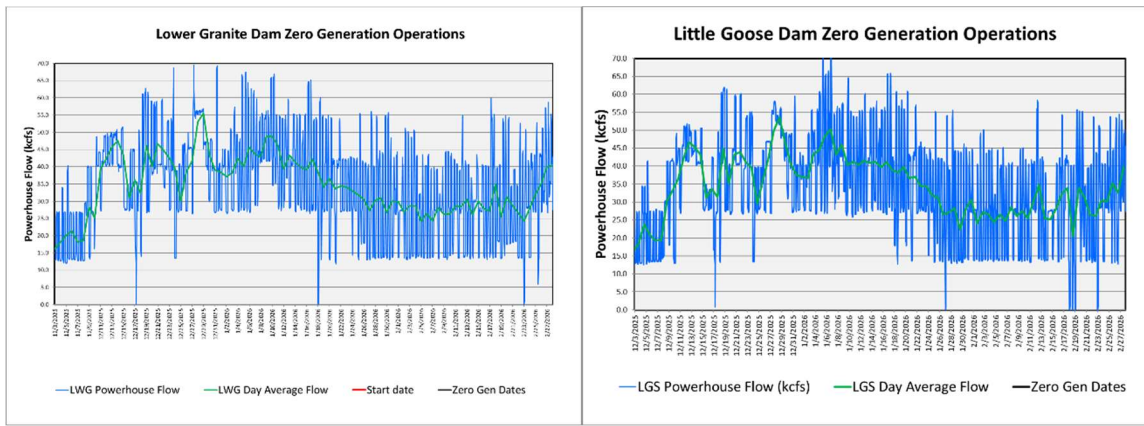
Sources for definitions and computation of nighttime hours:

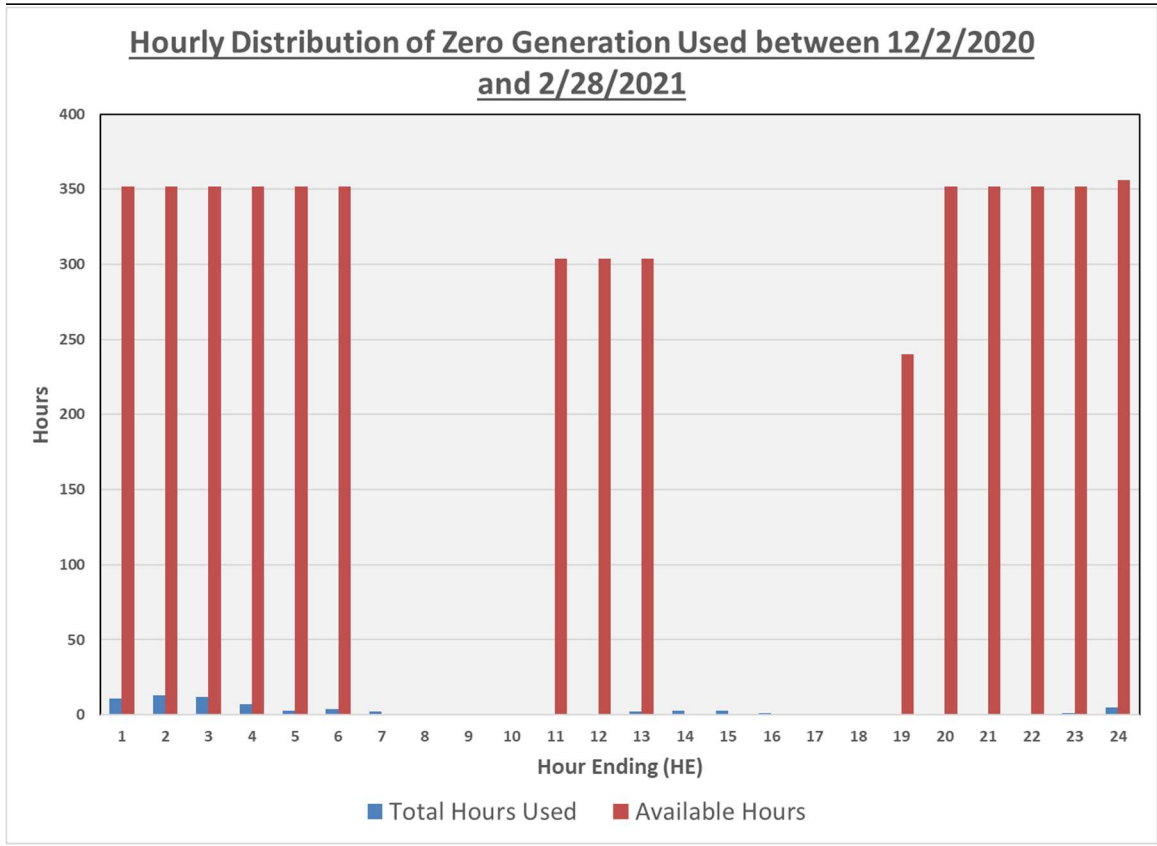
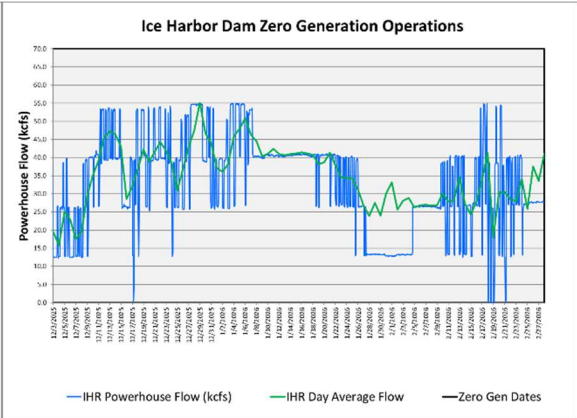
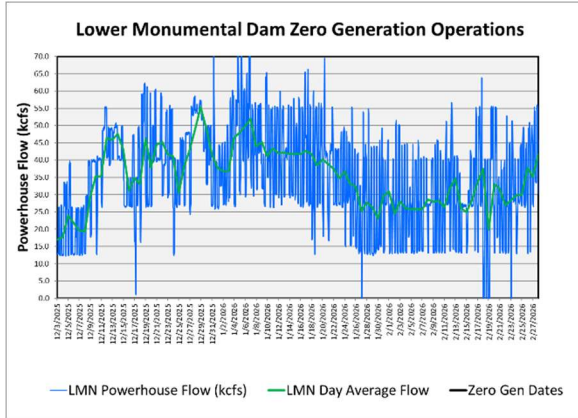
<https://www.esrl.noaa.gov/gmd/grad/solcalc/glossary.html>

<https://www.esrl.noaa.gov/gmd/grad/solcalc/calcdetails.html>

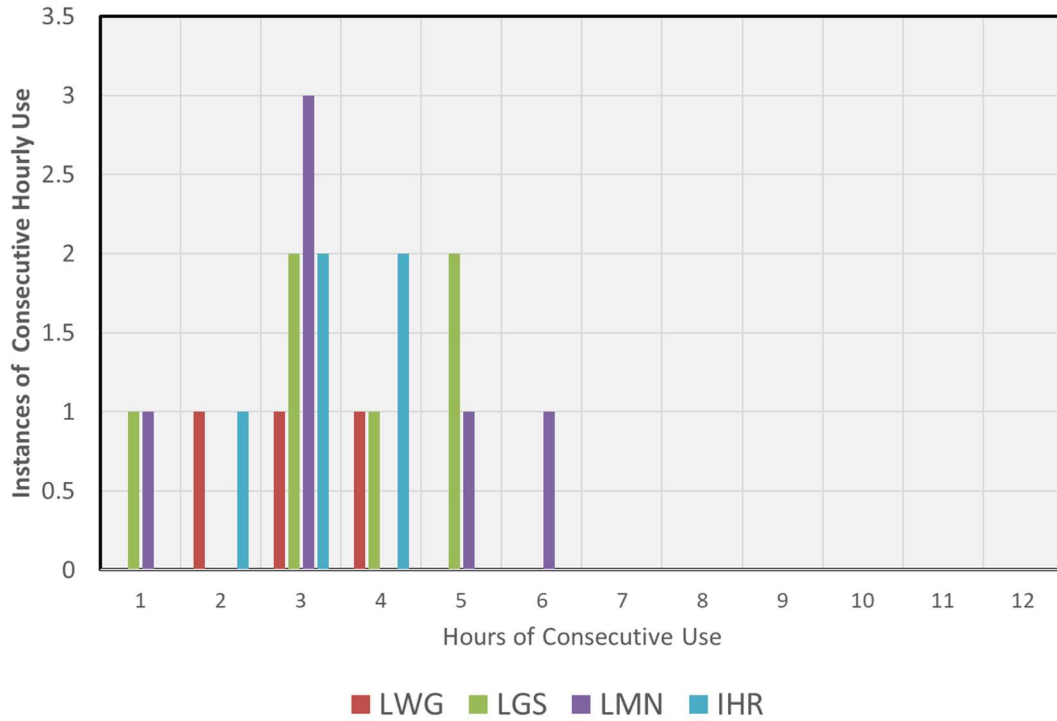
2025-2026 Zero Gen Operations:

Zero Gen was implemented 1.3% of the available hours and 3.7% of the available days.





**Distribution of Consecutive Hours of Use between 12/2/2020 and 2/28/2021**



**Distribution of Consecutive Use on Consecutive Days 12/2/2020 and 2/28/2021**

